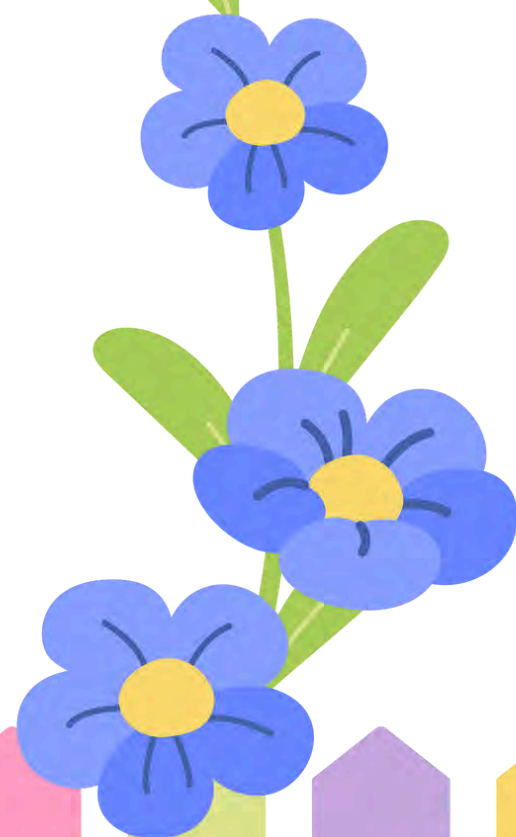


WOOD PROJECTS:



Birdhouse



Teacher's Pet



MATERIALS

HAMMER



GLUE



SCREWDRIVER



2 X PENTAGONAL SIDES



2 X RECTANGULAR ROOF PIECES



PERCH



DOWEL



2 X LONG RECTANGULAR WALL PIECES



2 X SHORT ANGLED EDGES WALL PIECES



BASE



HANGER

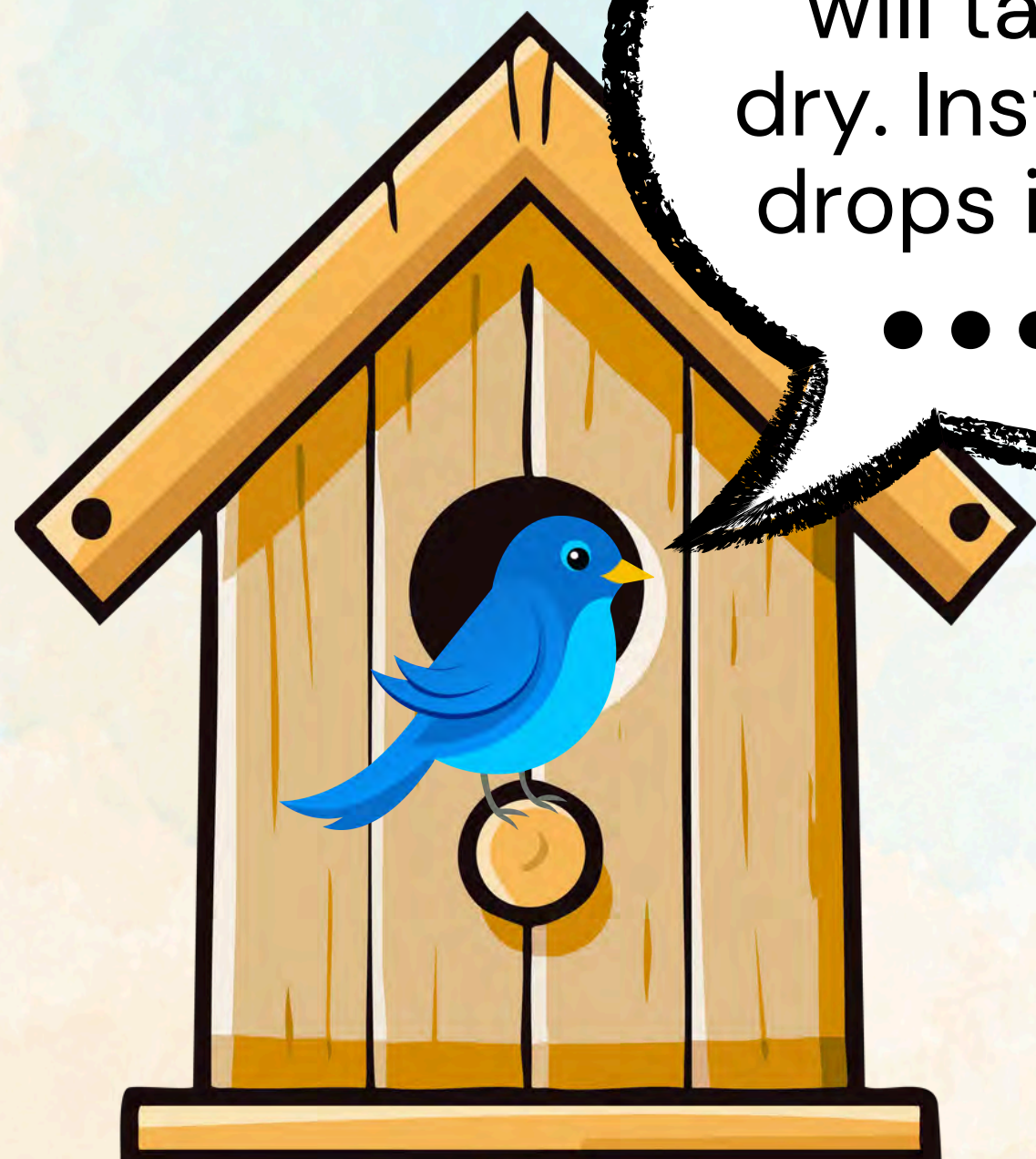


NAILS & SCREWS



WHEN APPLYING GLUE...REMEMBER, LESS IS MORE!

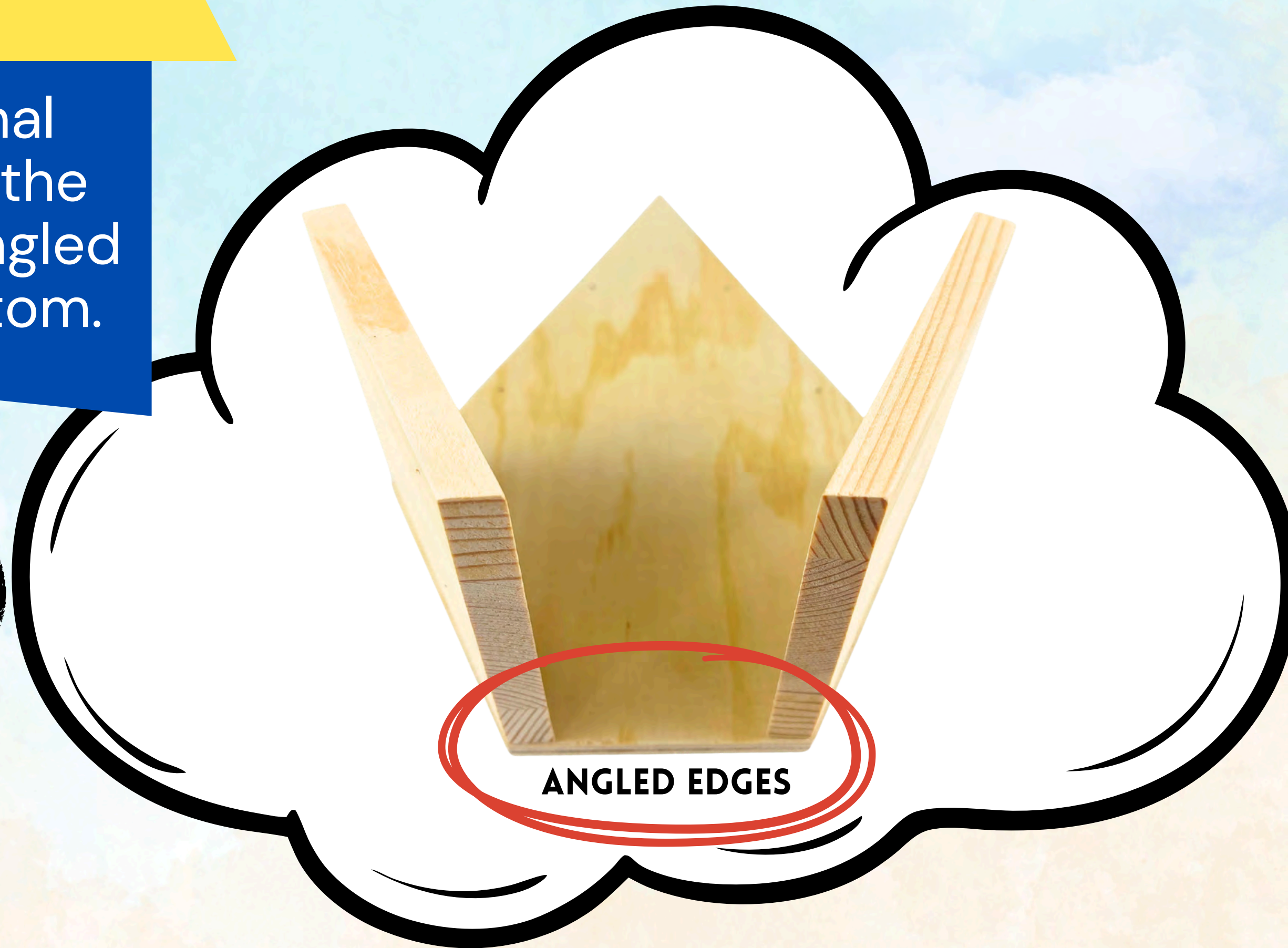
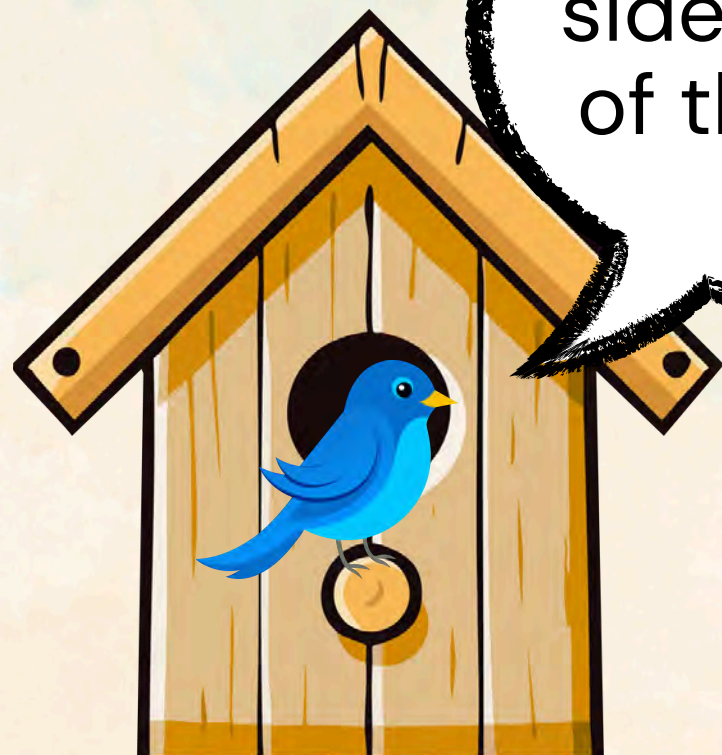
Using too much glue will take too long to dry. Instead, squirt tiny drops in a dotted line.



STEP 1

Lay the solid pentagonal piece (no holes) flat on the table. Glue the 2 short angled side walls along the bottom.

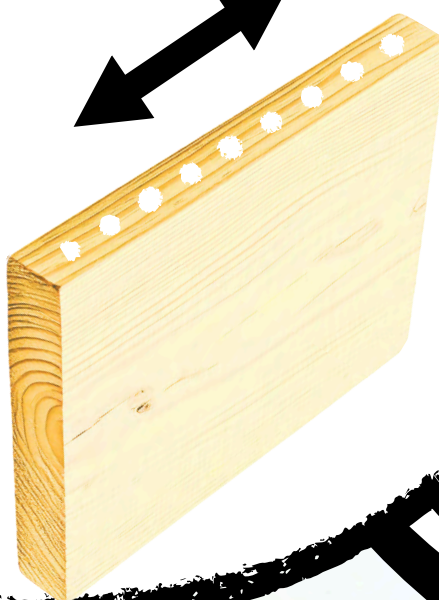
Make sure the sides and bottom of the pieces are lined up.



STEP 2

Glue the two long rectangular wall pieces to the pentagonal piece.

PLACE GLUE
DROPS
BETWEEN THE
NAIL HOLES



Ensure each
rectangular piece
covers the two
nail holes.

LONG RECTANGULAR
WALL PIECE #1

LONG RECTANGULAR
WALL PIECE #2

HOLE

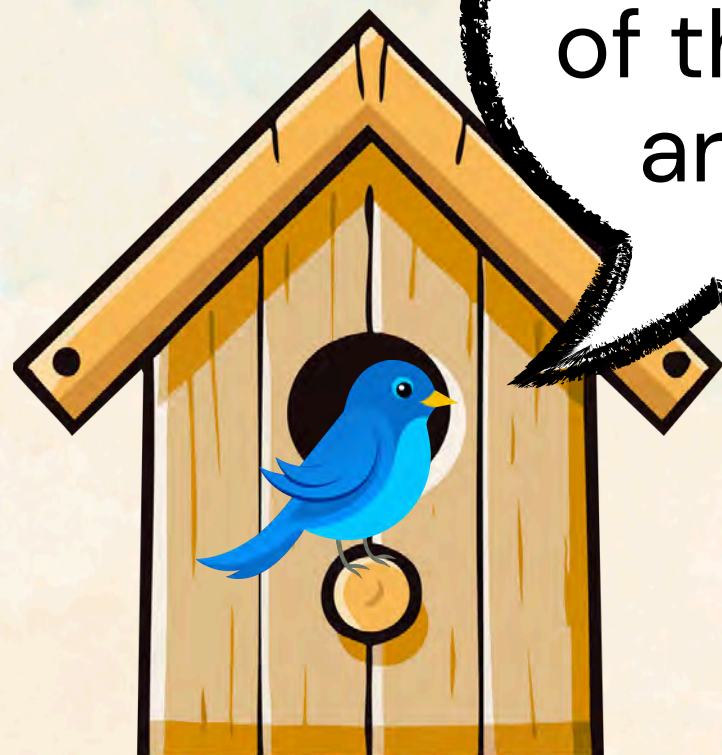
HOLE



STEP 3

Apply glue drops along all 4 wall pieces. Place the second pentagonal piece on top.

Ensure all edges of the birdhouse are lined up.



STEP 4

With support, hammer in **4 nails** to secure the top pentagonal piece to the 4 walls.

Reinforce your birdhouse with the remaining **4 nails** if the walls look uneven and/or if time permits at the end.



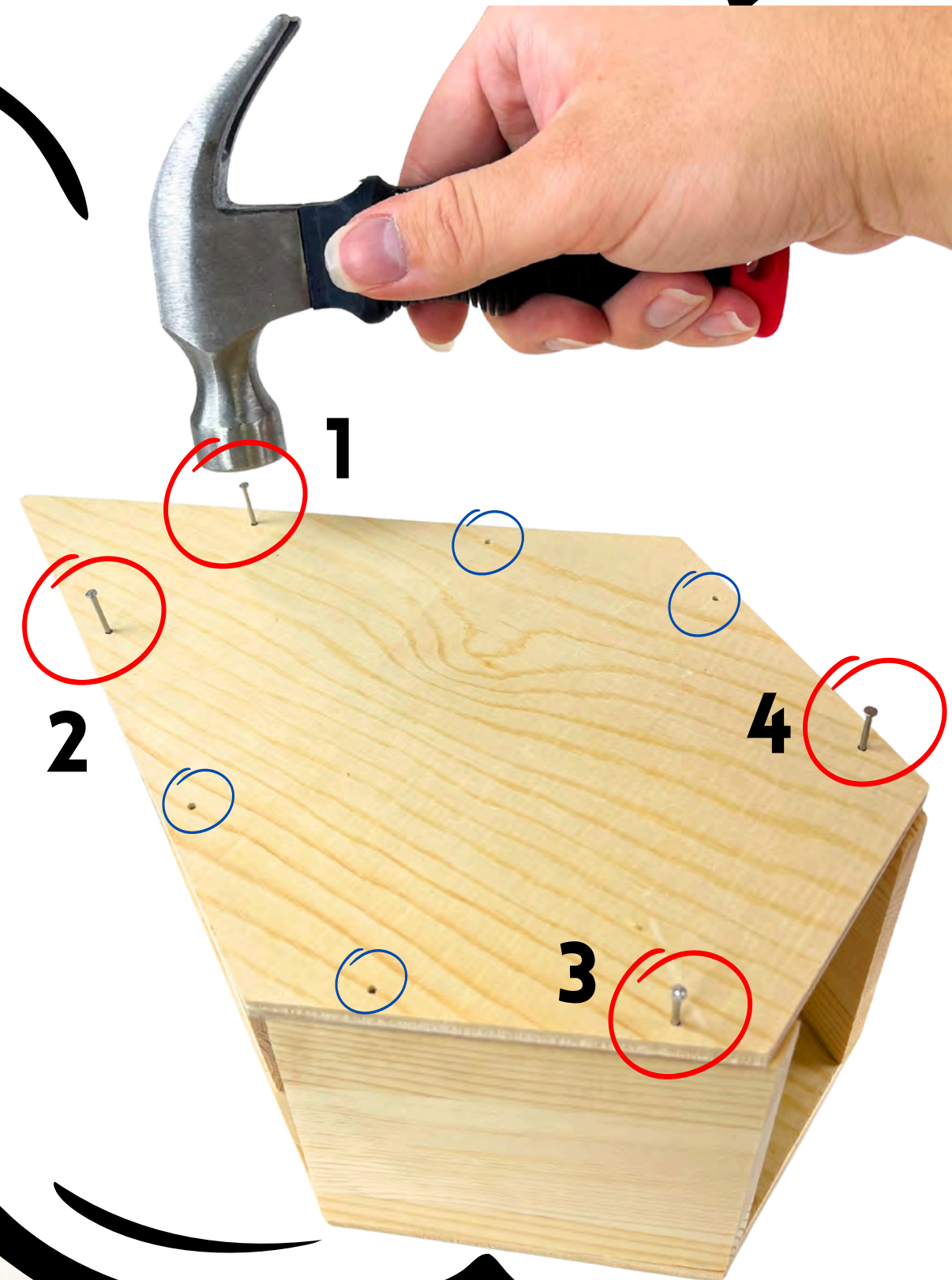
Nails vs Screws



STEP 5

Repeat the previous step with the bottom pentagonal piece.

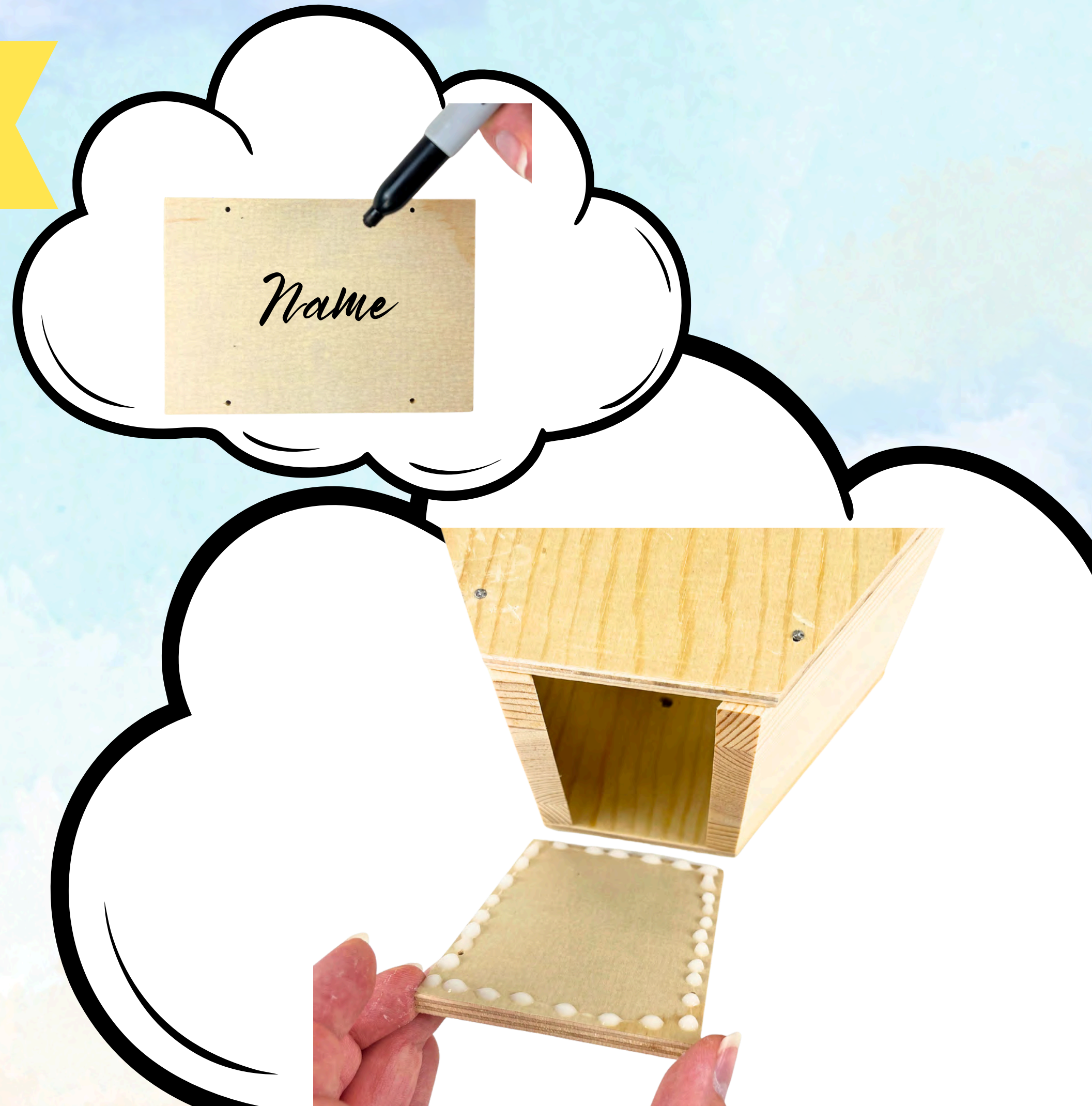
Again, use the remaining 4 nails on any walls that need extra reinforcement and/or add them if you have time at the end.



STEP 6

Write your name on the base. Then, glue the base to the bottom.

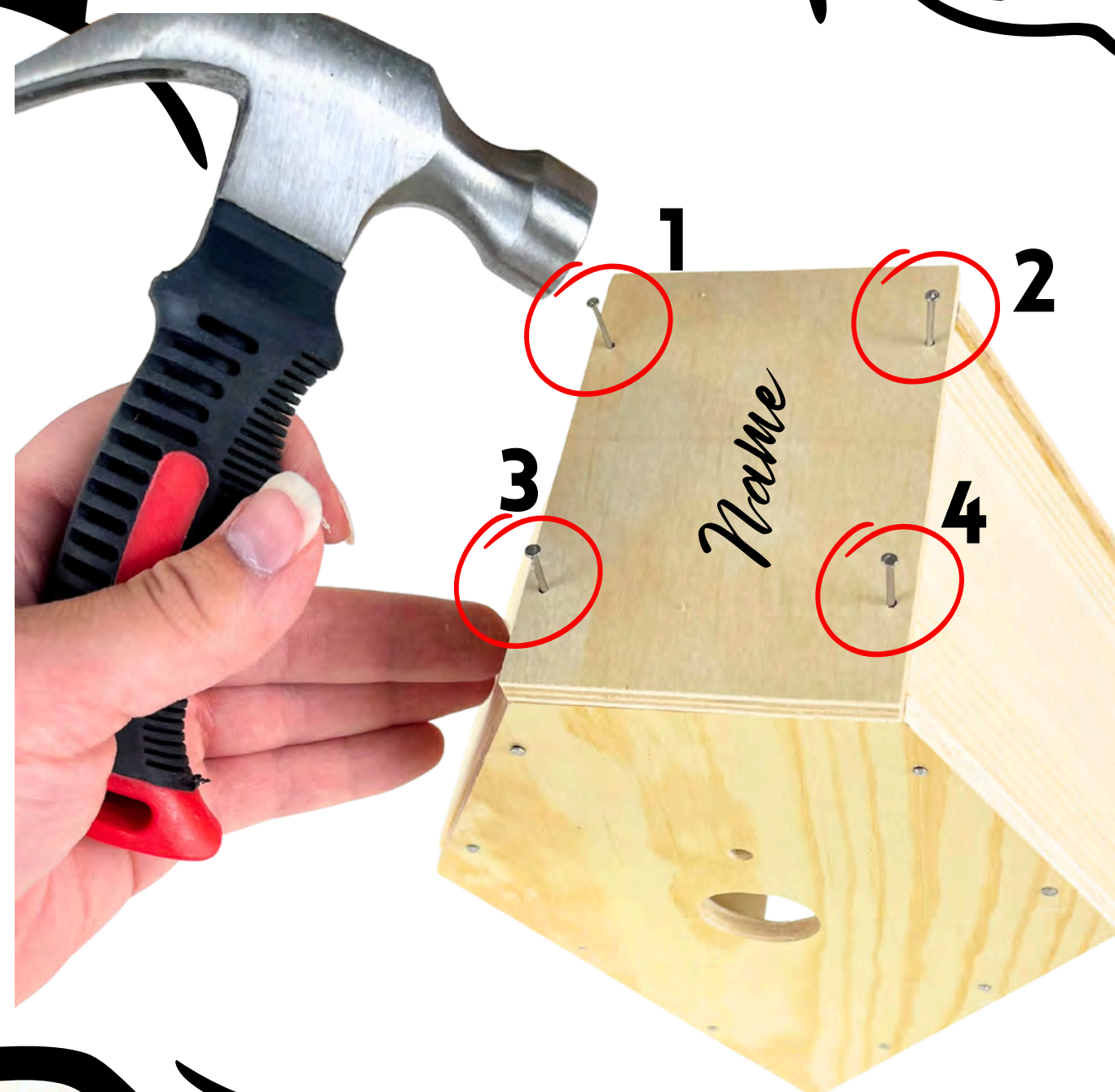
The side with your name faces out.



STEP 7

Reinforce the base by hammering in 4 nails.

Nails vs Screws



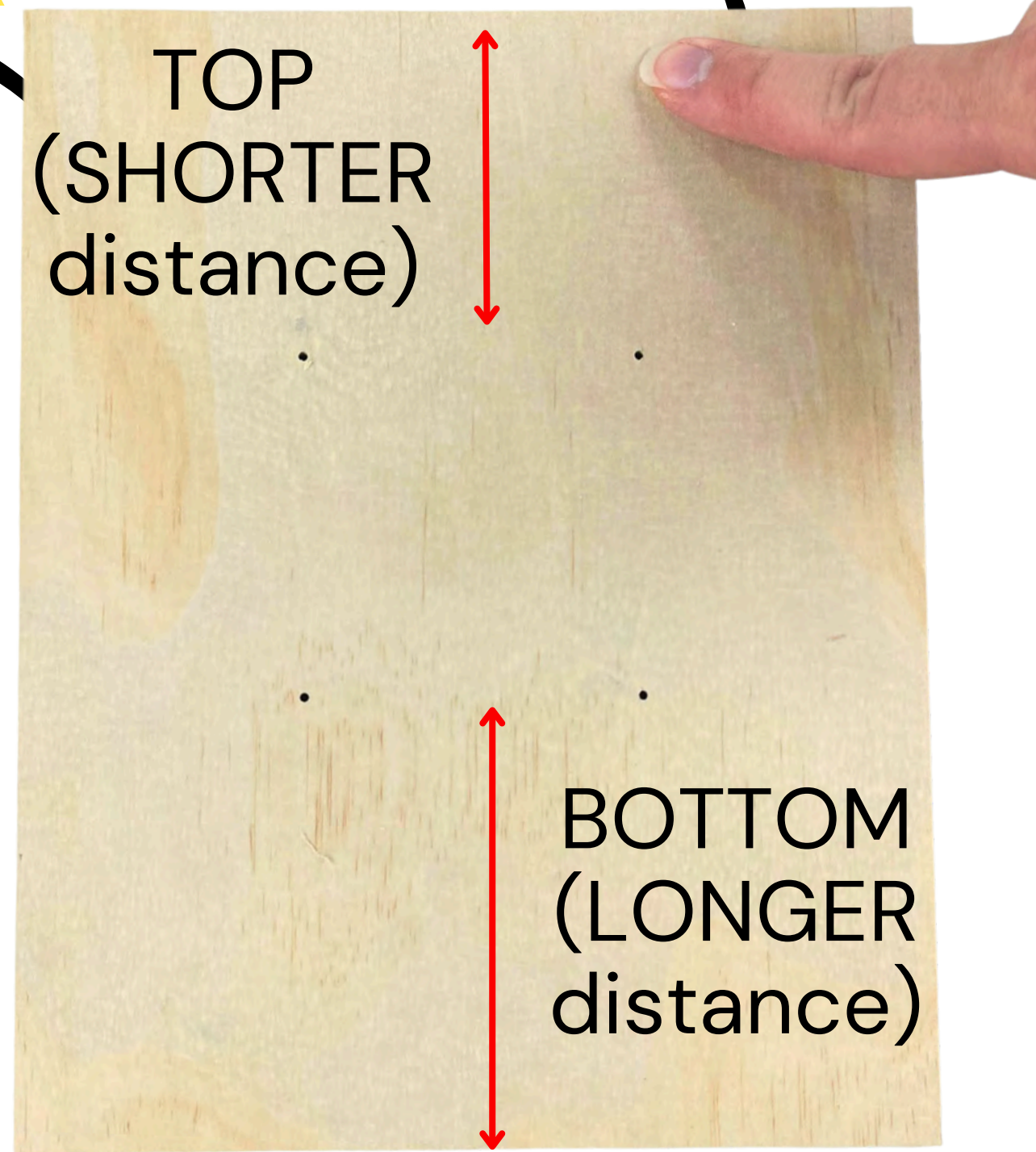
ROOF PIECES

Which edge goes on top?

The holes need to be closer to the top!

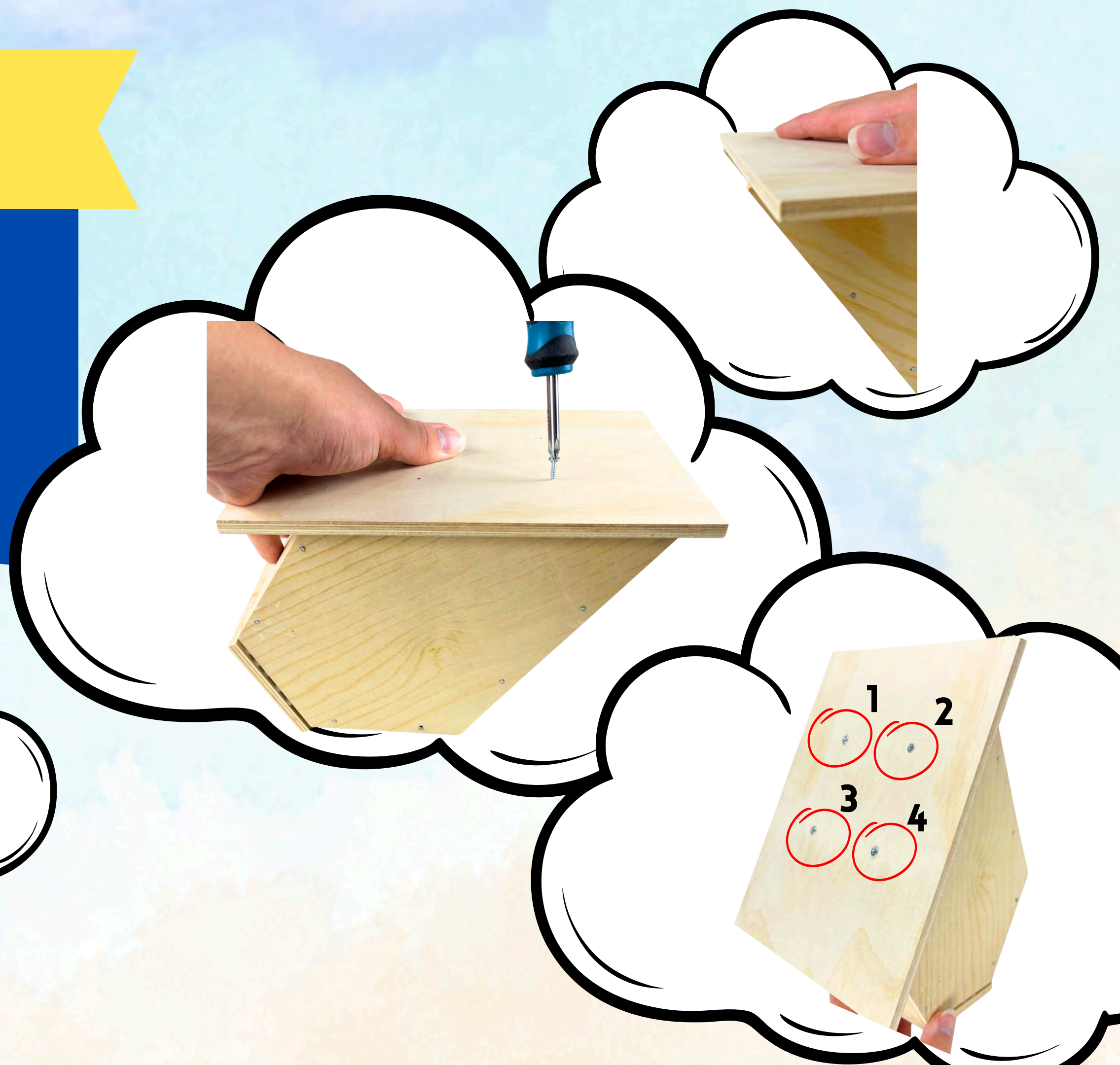
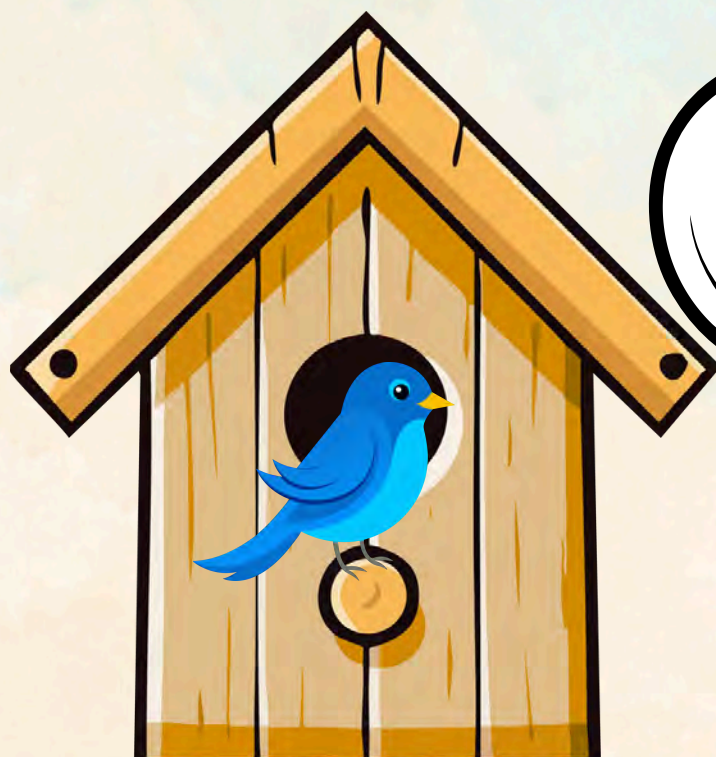
TOP
(SHORTER
distance)

BOTTOM
(LONGER
distance)



STEP 8

Line up one roof piece to the point of the pentagonal piece. Use the screwdriver and 4 screws to secure one roof piece in place.



STEP 9

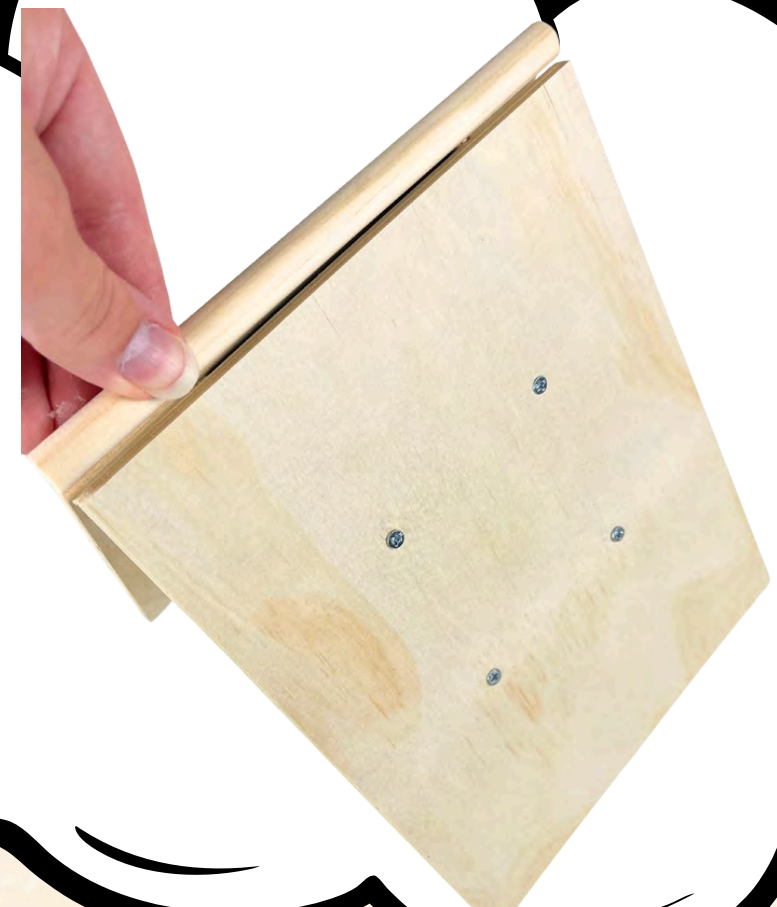
Repeat the previous step and assemble the second roof piece.

Make sure two roof pieces line up at the top.



STEP 10

Use wood glue to adhere the dowel in between the two roof pieces.



STEP 11

Use a tiny drop of wood glue to adhere the perch.



STEP 12

If time permits, attach the metal hanger to the back using two nails.

The hanger goes on the roof pieces – not the pentagonal piece!





Thank

you!



Teacher's Pet