

# **Design & Build:** Temporary Art















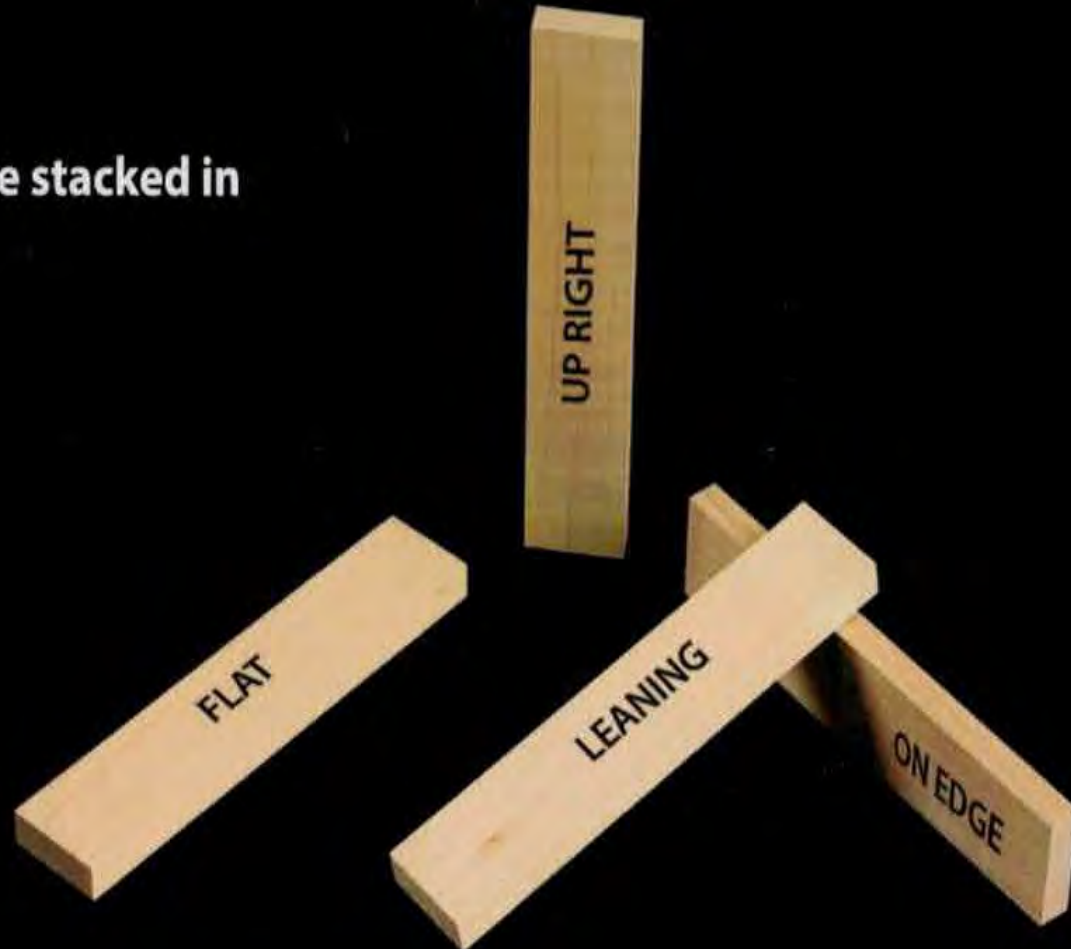


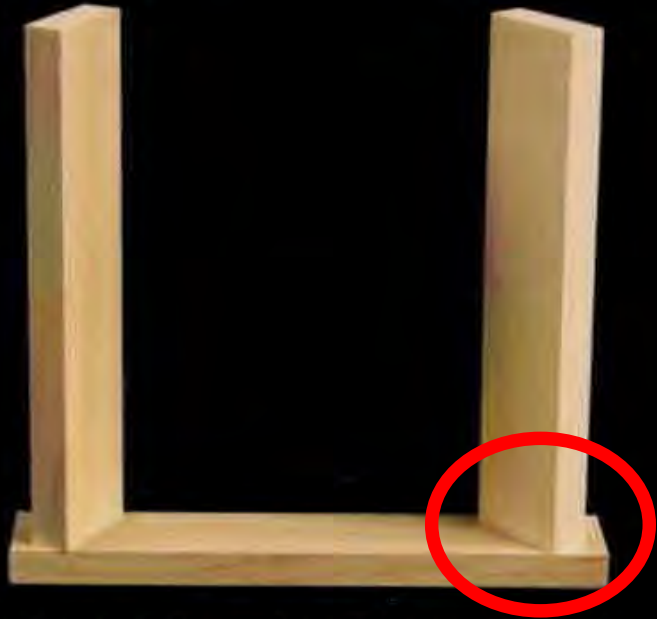
# KEVA Planks

KEVA Planks can be stacked in

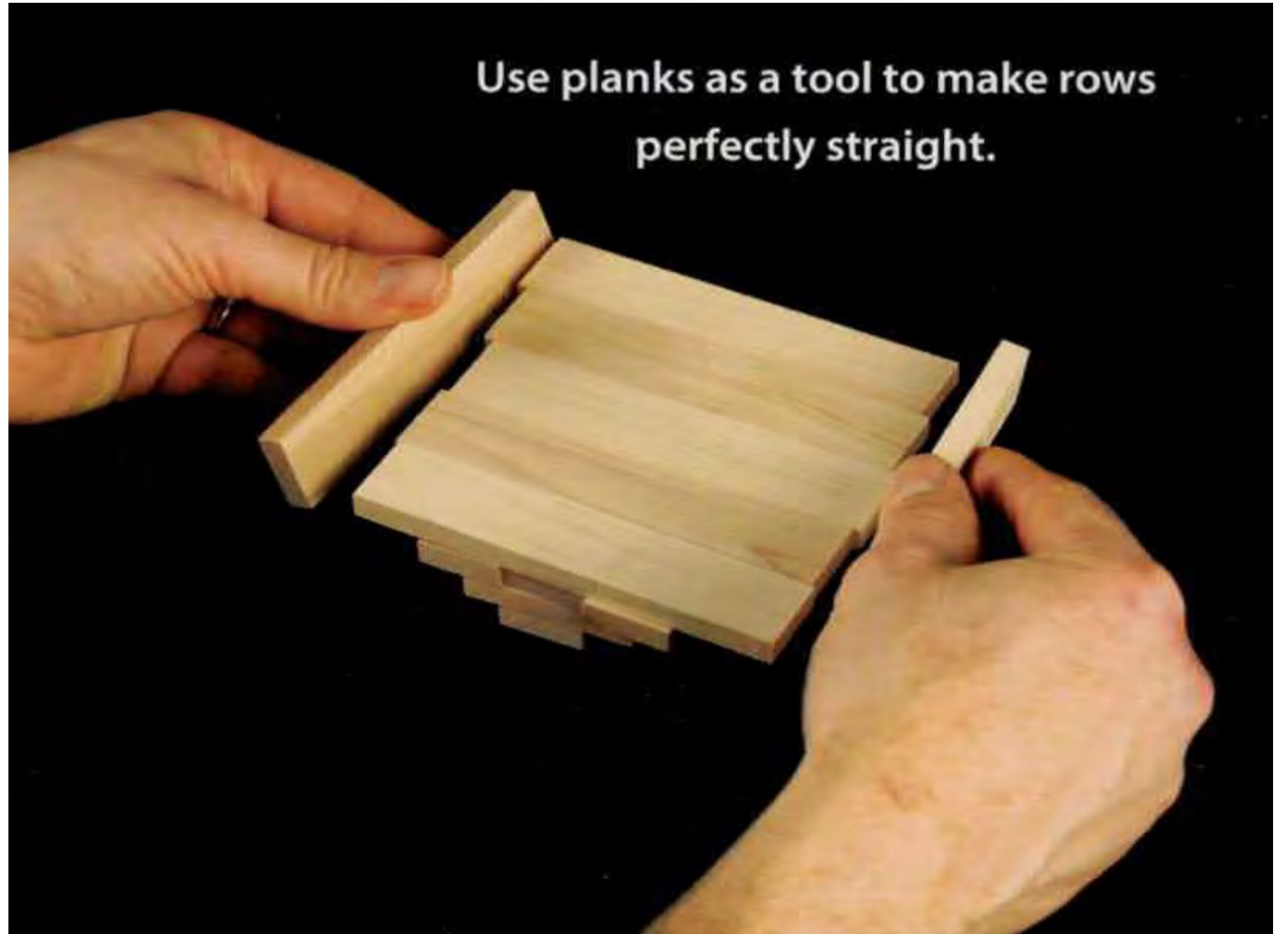
four ways:

- Flat
- Leaning
- On Edge
- Upright





Upright planks are more stable if they are angled toward each other rather than parallel. Place a plank on top of the uprights to stabilize them and prevent the "domino effect."





***Count down from 10***



**Hands up!**

# Exploratory Play

---



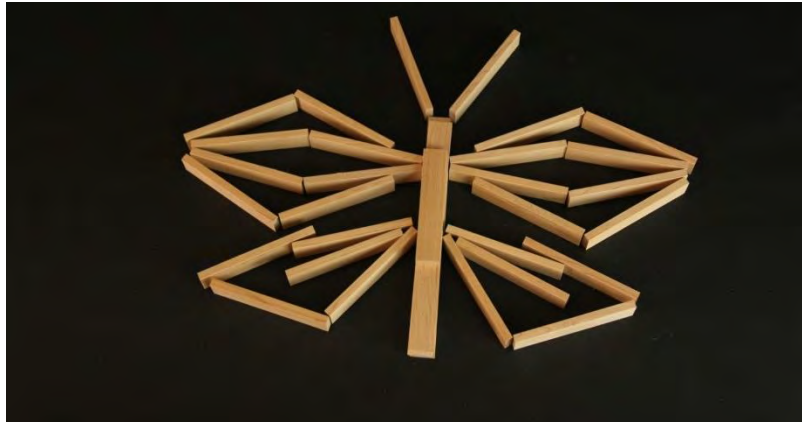
You will each have 50 planks to borrow and work with for the next 10 minutes.

See what you can build!

Be careful not to bump the desks.

**Planks stacked in 10 groups of 5**





# Guided Play

---

**Same But Different**

# KEVA Planks

KEVA Planks can be stacked in

four ways:

- Flat
- Leaning
- On Edge
- Upright



**Create a base with 5 planks, on their flat side, next to each other**



**Add 2 planks per row, either on edge, flat side, or up right. Keep going as high as you can!**



# Alphabet Challenge



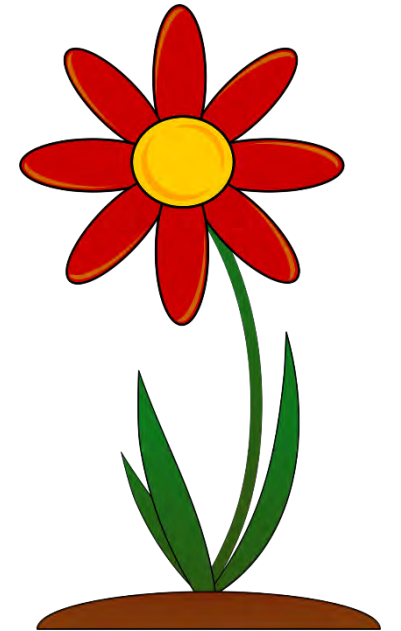


# Cake Challenge!





# Flower Garden



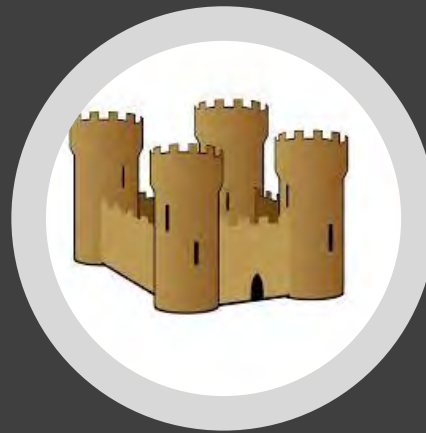


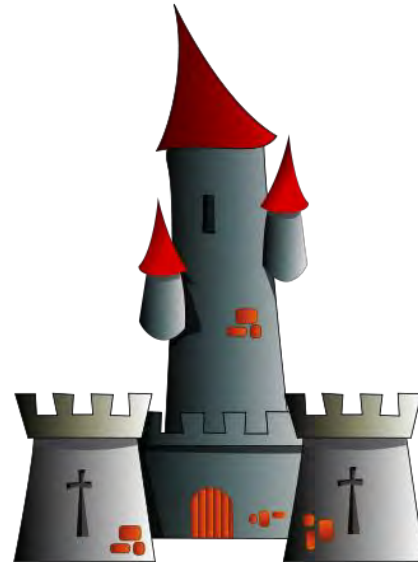
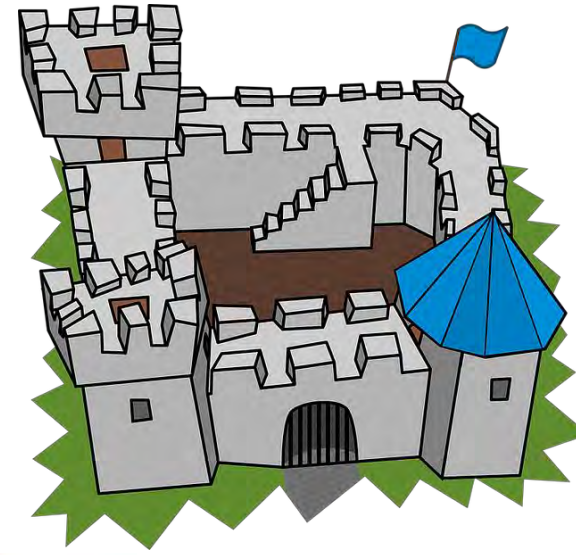
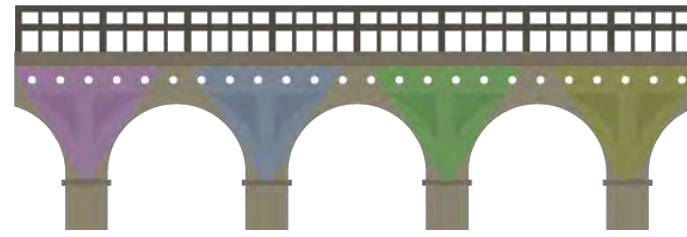
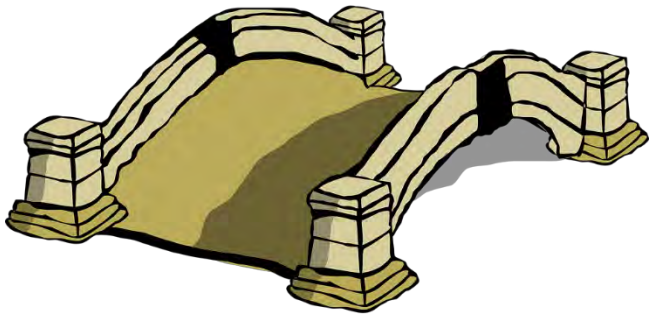
Team Challenge!

---

# Team Challenge!

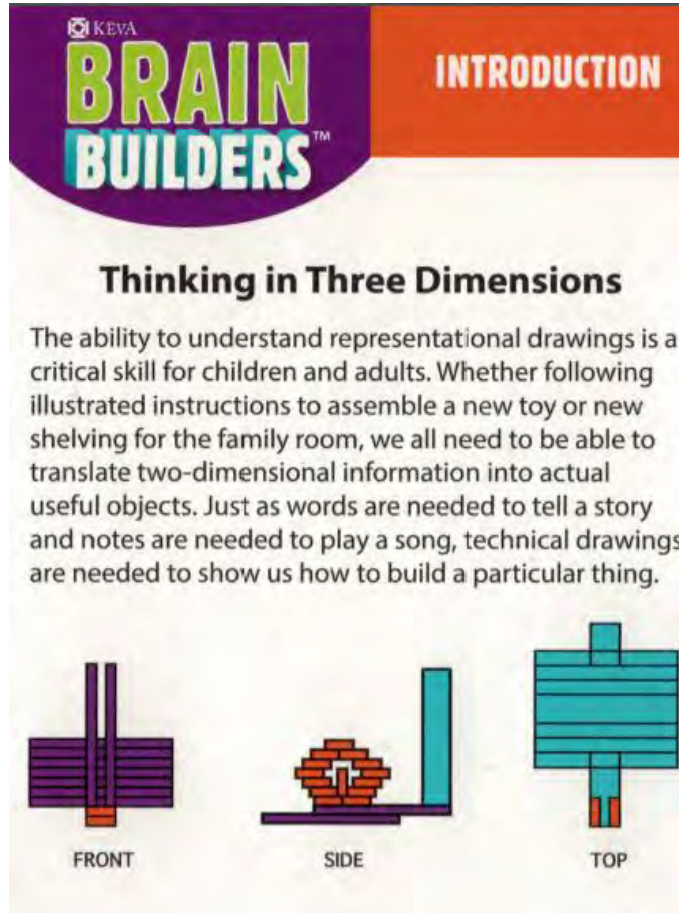
- In a group of 4, your challenge is to build a castle with the following parts:
  - A bridge
  - A wall with a door
  - At least 2 towers
  - At least 2 kinds of trees





# Extensions

# Brain Builders

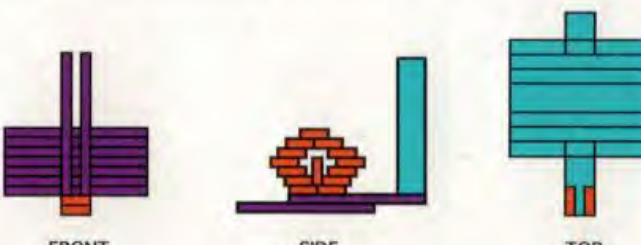


**KEVA**  
**BRAIN BUILDERS™**

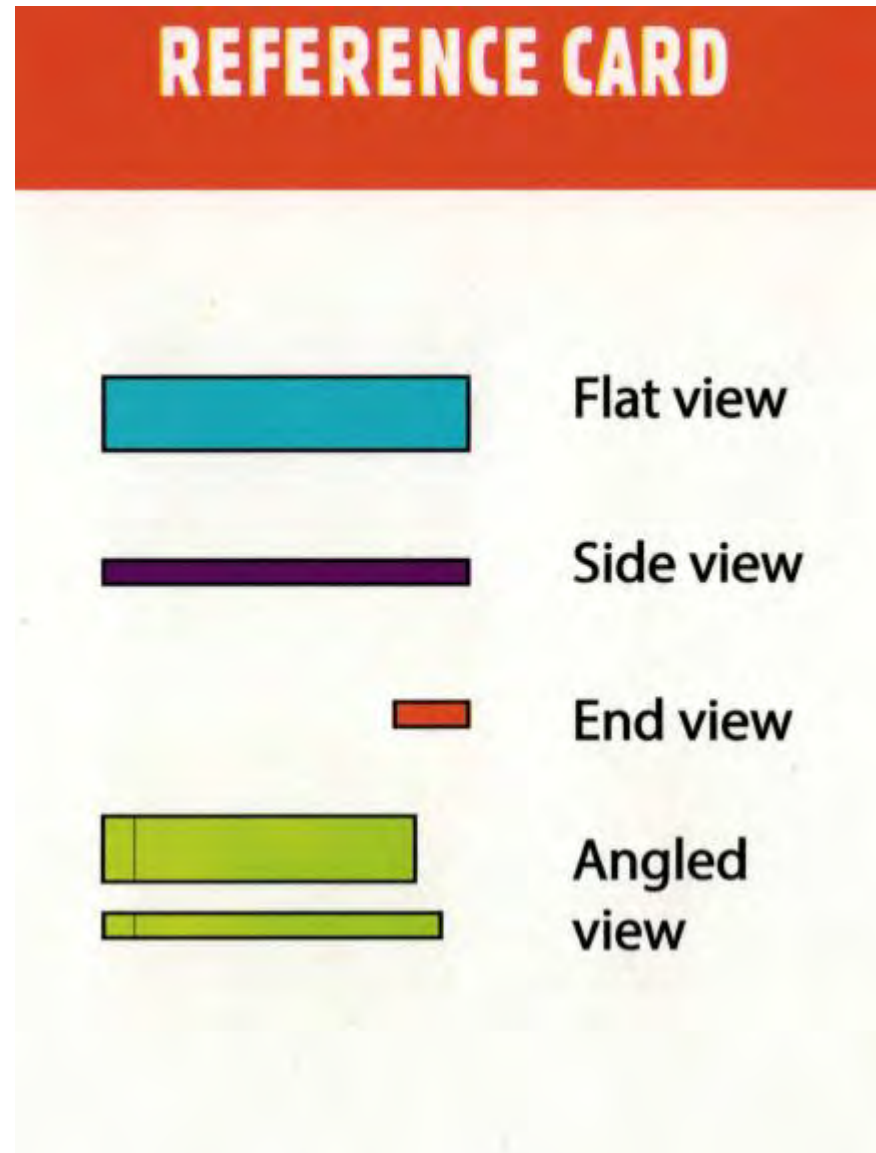
**INTRODUCTION**

### Thinking in Three Dimensions

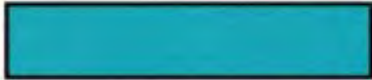
The ability to understand representational drawings is a critical skill for children and adults. Whether following illustrated instructions to assemble a new toy or new shelving for the family room, we all need to be able to translate two-dimensional information into actual useful objects. Just as words are needed to tell a story and notes are needed to play a song, technical drawings are needed to show us how to build a particular thing.




FRONT      SIDE      TOP




**REFERENCE CARD**




**Flat view**



**Side view**



**End view**



**Angled view**



**KEVA**  
**BRAIN BUILDERS™**

**INSTRUCTIONS**

### Color Coded Drawings

KEVA planks have three distinct surfaces. Each one is color coded on the technical drawings so you can rely on color as well as shape when determining how to position each plank. The broad flat view of a plank is **blue**. The narrow side view of a plank is **purple**. The small end view of a plank is **orange**. Planks that are angled are **green**.

### Don't Peek!

The back side of each card features a photograph of the solution. Resist the urge to look at this side of the card which makes the construction of the puzzle obvious.

### Start Easy

The cards are numbered and grouped into three levels. The higher the number, the harder the challenge. If you get stuck, it may help to hold the card beside your structure to compare the drawings to the planks you have stacked. Move around your structure so you can see it from all directions.

# Clean Up

- Create 10 stacks of 5 planks to be sure you have 50.
  - Put the planks into a Ziploc bag.