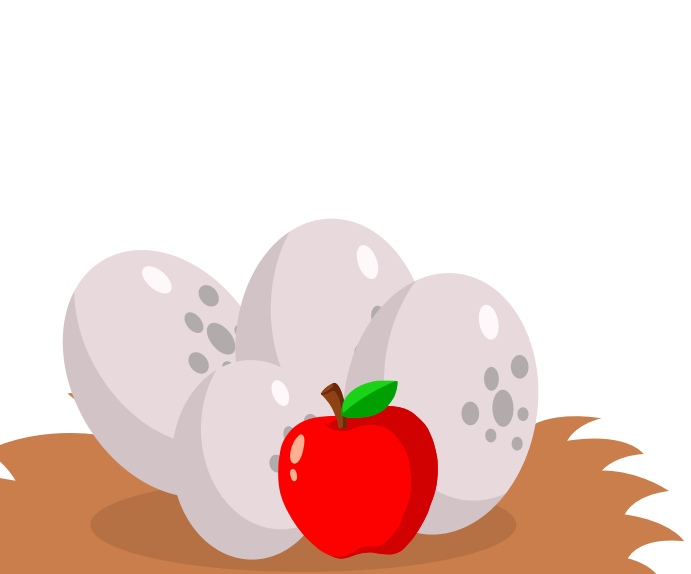




# Teacher's Pet

## KINDERGARTEN PROGRAMS





# WHAT IS TEACHER'S PET?





# SUPPORT. ENRICH. INSPIRE.





# OUR PROGRAMS



- WE PROVIDE THE MATERIALS!
- DIRECTLY ALIGNED WITH ALBERTA CURRICULUM
- NO BUS FEES (\*TRAVEL FEES MAY APPLY)
- PAY PER STUDENT (MIN. FEE BASED ON 15 STUDENTS: MAX. 32 STUDENTS)
- PAYMENT AFTER PROGRAM FOR ACCURATE INVOICING
- PRICING ON WEBSITE
- GST EXEMPT!
- DEFAULT START TIMES 9AM & 1PM

CONTACT US IF YOU  
MAY NEED TIME  
ADJUSTMENTS

\*TRAVEL FEES APPLY FOR LOCATIONS > 25 KM FROM CITY CENTRE



# STAR REWARDS PROGRAM

EARN POINTS FOR EACH BOOKING AND REFERRAL!



2024-2025  
GOLD TIERED  
BACK-TO-SCHOOL  
GIFTS

**IT'S FREE!**

EARN BONUS  
POINTS TO  
REDEEM FOR  
DISCOUNTS  
ON PROGRAMS

EXCLUSIVE  
PROMOS  
AND PERKS,  
DEPENDING  
ON YOUR  
STAR TIER  
LEVEL

DONATE YOUR  
BONUS POINTS  
TO A CHARITABLE  
ORGANIZATION  
OR THE PLANT 5  
TREES PROGRAM

SIGN UP TODAY TO EARN 75 WELCOME BONUS POINTS!



# HOW TO BOOK IN-SCHOOL PROGRAMS

## 1. PICK A TOPIC

- Browse our selection at [www.tpet.ca](http://www.tpet.ca)

## 2. BOOK ONLINE OR CALL OUR OFFICE!

- Book programs under individual teacher names (Exception for Kinder teachers to book multiple for AM & PM classes)
- Each teacher receives corresponding program details & Star Rewards points so everyone can enjoy the perks!

## 3. REVIEW CONFIRMATION EMAIL

- Contact us asap if you have any questions!
- Check your junk mail folder if it is missing.

## 4. LOG INTO YOUR TPET ACCOUNT

- Access booking history & account details

ROBOTICS

STEM

LOOK OUT FOR  
SPECIAL PROMO CODES  
DURING THE SCHOOL  
YEAR TO SAVE MONEY!

SCIENCE

SOCIAL  
STUDIES

ART

HEALTH

CODING

PROJECT  
BASED

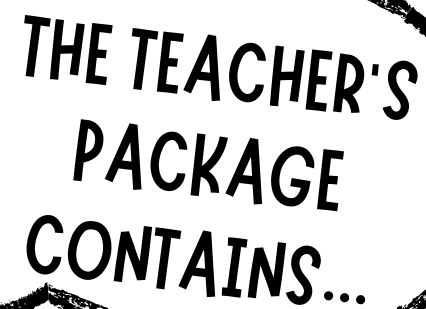
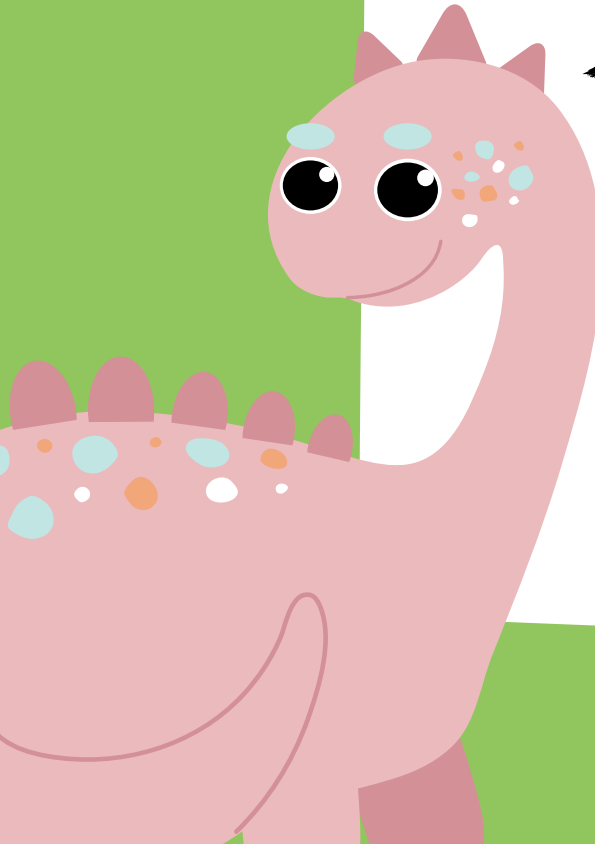




# TEACHER'S PACKAGE



30-DAY AND 7-DAY REMINDER EMAILS WITH A LINK TO ACCESS THE TEACHER'S PACKAGE WILL BE SENT TO YOU PRIOR TO YOUR PROGRAM!



THE TEACHER'S  
PACKAGE  
CONTAINS...

...CLASSROOM  
SET UP INFO

...VOLUNTEER  
INFO

...PROGRAM  
HIGHLIGHTS/  
OUTCOMES

...EXTRA RESOURCES  
AND/OR OTHER  
IMPORTANT INFO  
(IF APPLICABLE)



# ✦ RESCHEDULE/CANCELLATION POLICY ✦

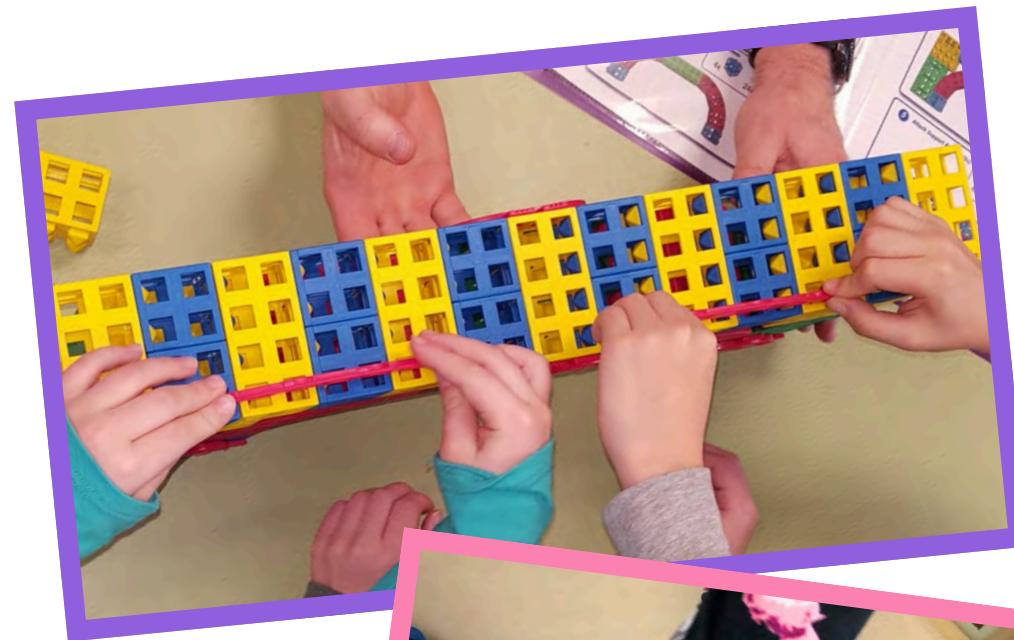
FULL POLICY DETAILS ON WEBSITE

- RESCHEDULE UP TO 10 BUSINESS DAYS BEFORE THE FIELD TRIP DATE AT NO CHARGE
- CANCEL PROGRAMS UP TO 16 BUSINESS DAYS BEFORE THE FIELD TRIP DATE AT NO CHARGE





# WE BRING JOY, ENGAGEMENT, AND LEARNING TO YOUR CLASSROOM!





# KINDERGARTEN PROGRAMS



**DINO SENSES**



**READY, SET, MOVE!**



**NUMBER FARM**



**I AM UNIQUE**



**HEALTHY ME**



# KINDERGARTEN PROGRAMS



**DINO SENSES**

**READY, SET, MOVE!**

Teachers  
**Number Farm**  
**Magnetic Fun**  
**NUMBER FARM**

**I AM UNIQUE**

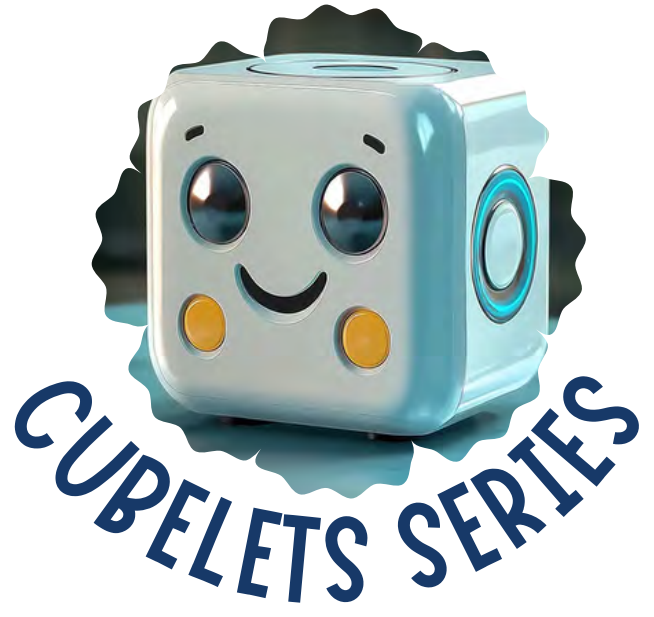
**HEALTHY ME**



DESIGN & BUILD



ENGINEERING DISCOVERIES



CUBELETS SERIES



CREATIVE ART SERIES



DREAMCATCHERS



CODING EXPLORATIONS: MAZES

**MULTI-GRADE PROGRAMS**



SOAPSTONE SERIES



PRINTMAKING



BEE HOUSE



BIRDHOUSE



TOOL BOX



LOG CABIN



✦ LET'S EXPLORE THE MICE! ✦





✦ LET'S CARVE A SOAPSTONE! ✦



# Brontosaurus



Draw



Etch

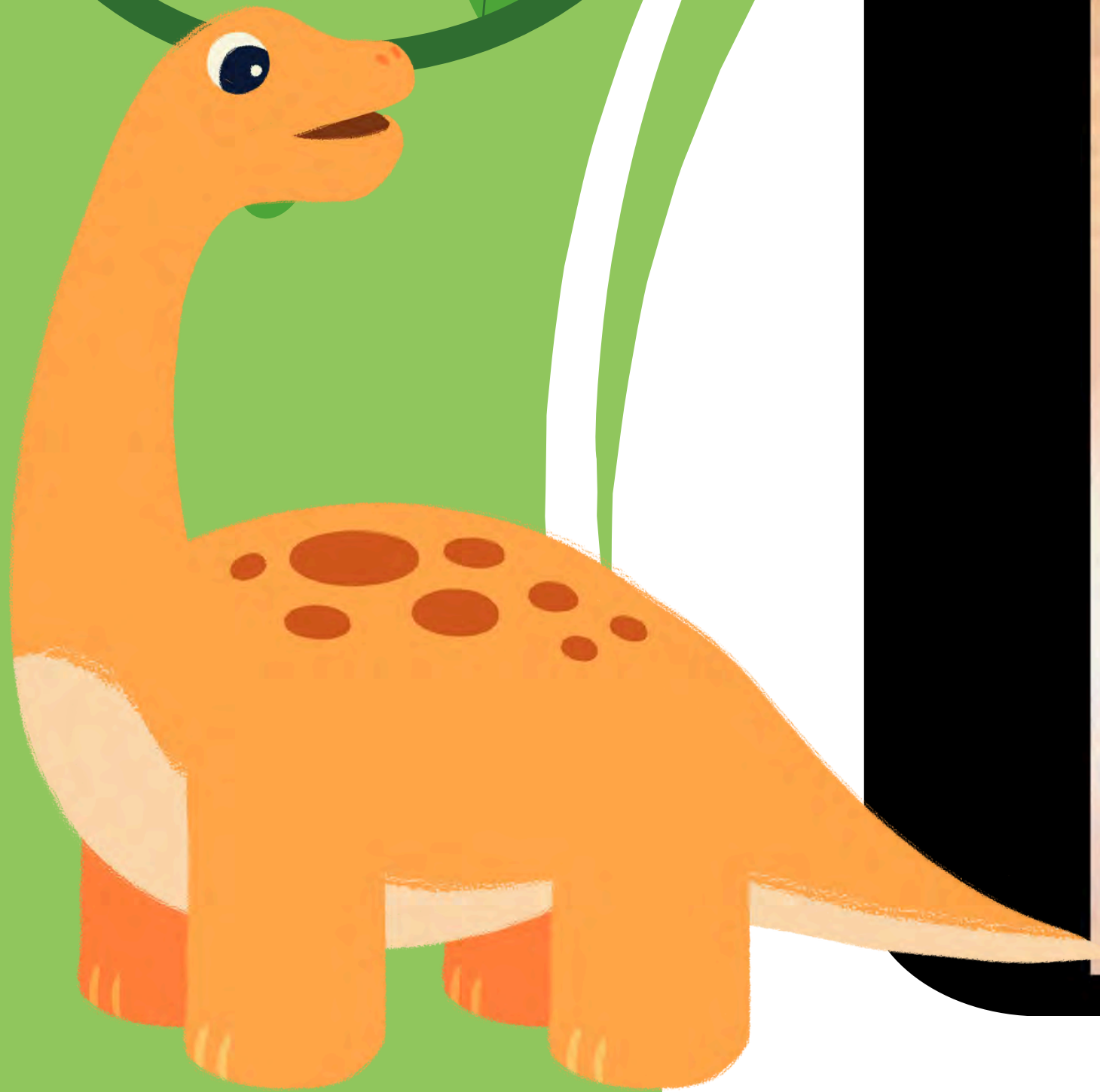
RASP  
OPTIONAL



# Sand Sides



100 GRIT  
SANDPAPER



# Sand Flat Sides – not etched



# Sand and Smooth All Surfaces



600 GRIT  
SANDPAPER





# Oil



TUNG OIL

Finished





THANK YOU!

LOOK OUT FOR SPECIAL PROMOS DURING THE SCHOOL YEAR!

EXCLUSIVE PROMO  
CODE FOR YOU TODAY:

ECS25

SAVE \$2/STUDENT

PROMO VALID FROM APRIL 11-18, 2025  
BOOKINGS MUST TAKE PLACE BEFORE JUNE 30, 2025  
NEW BOOKINGS ONLY



# CONTACT INFO:



**Teacher's Pet**



**www.tpet.ca**



**fieldtrips@tpet.ca**



**780-434-8224**

**Toll free: 1-888-634-8738**



**11215 - 180 Street**

**Edmonton, AB**

**T5S 0B4**

