



Teacher's Pet

**INTERNAL
BIOLOGY OF
LIVING
ORGANISMS**





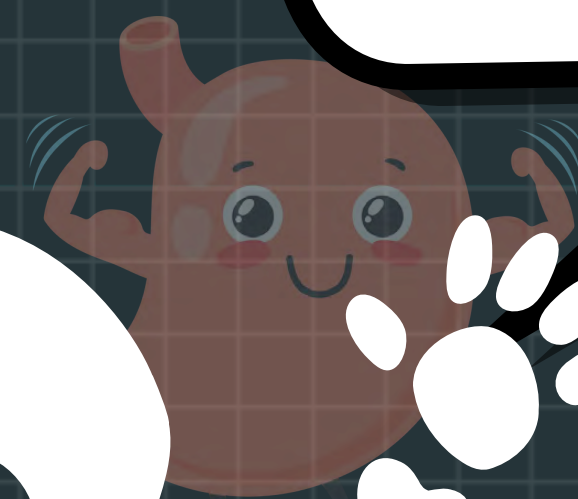
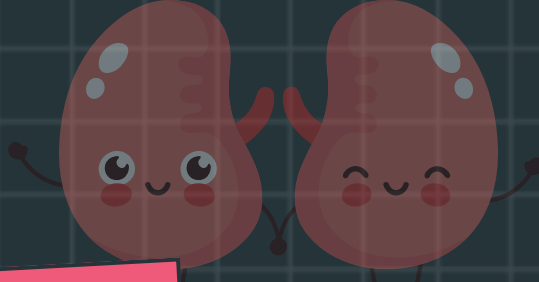
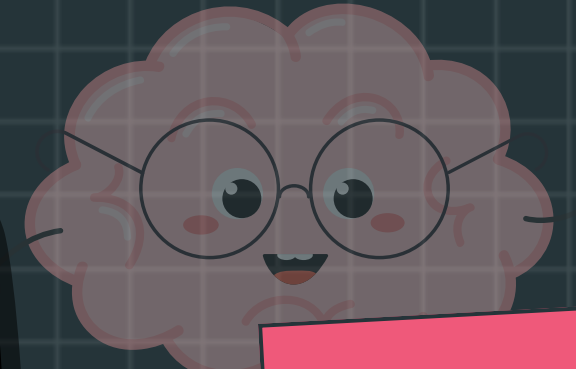
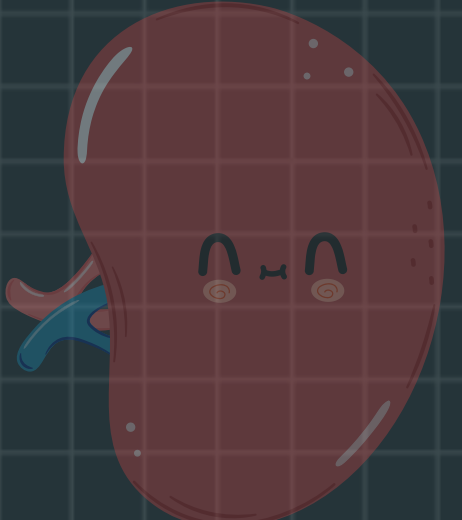


GUIDING QUESTION

**HOW ARE ORGANISMS
SUPPORTED BY VITAL BIOLOGICAL
PROCESSES AND SYSTEMS?**



INTRODUCTION VIDEO



Humans are complex organisms with biological systems that carry out vital biological processes.

VIDEO REVIEW QUESTION #1

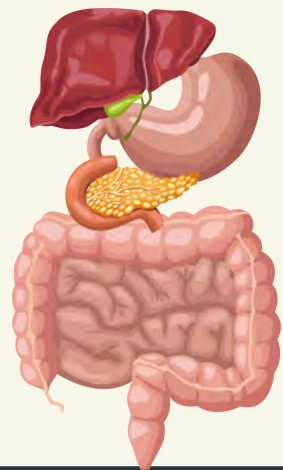
Can you name an important biological system from the video?

**VIDEO REVIEW
QUESTION # 1**

Can you name an important biological system from the video?

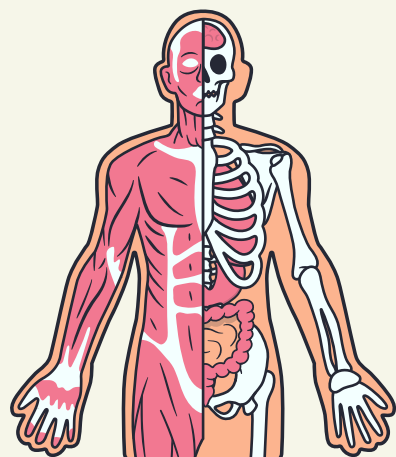
1

Digestive System



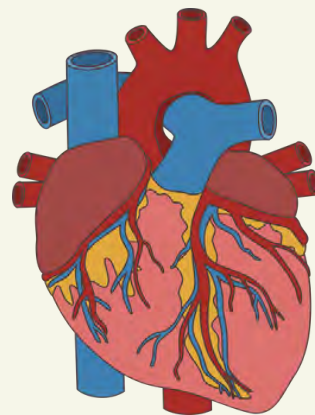
2

Musculoskeletal System



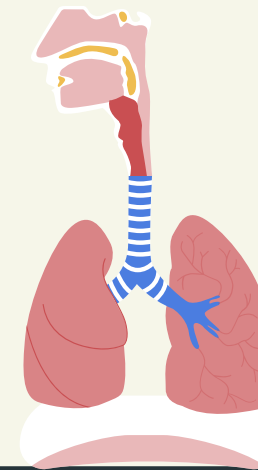
3

Circulatory System



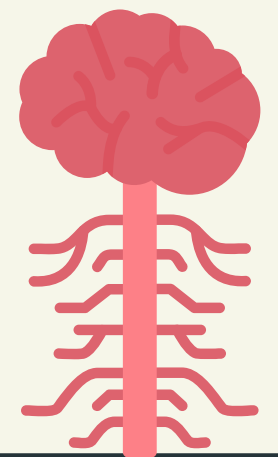
4

Respiratory System



5

Nervous System





There are 5 vital biological processes of complex organisms.



VIDEO REVIEW QUESTION #2

Can you name a vital biological process from the video?

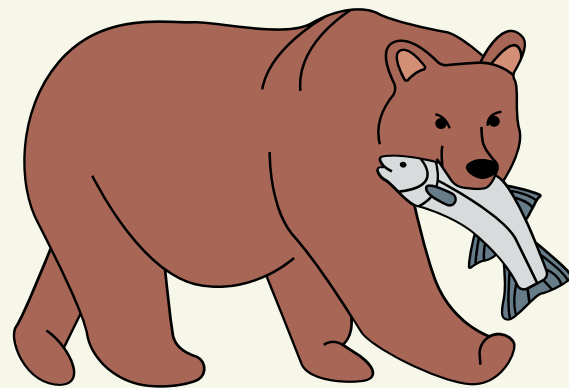


**VIDEO REVIEW
QUESTION # 2**

Can you name a vital biological process from the video?

1

Movement



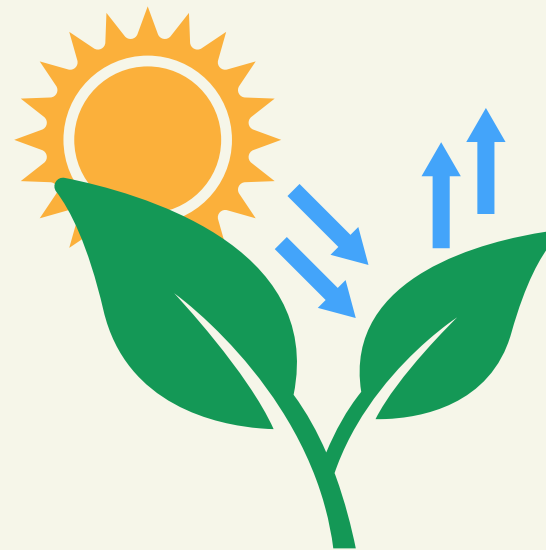
2

Nutrition



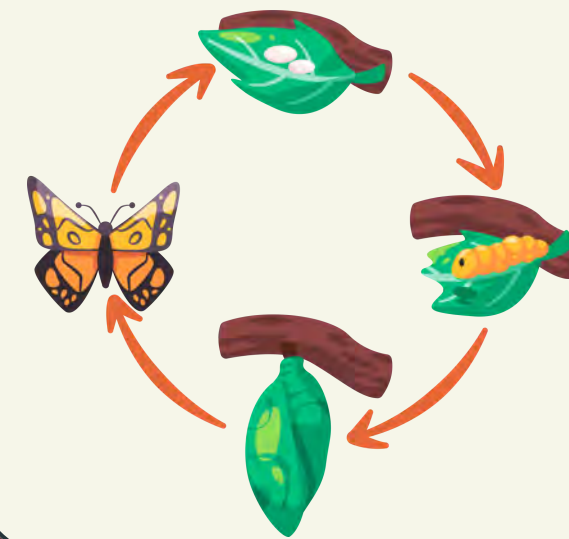
3

Respiration



4

Growth



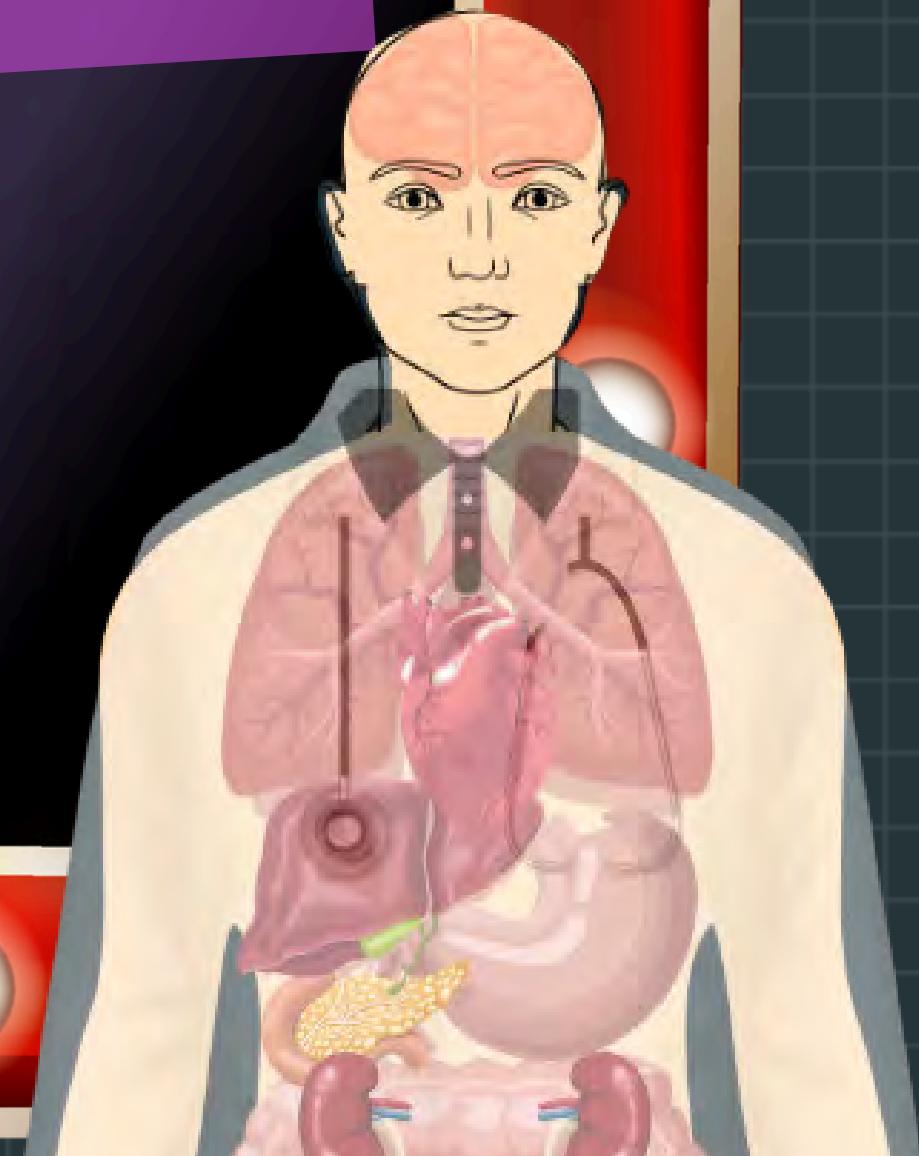
5

Reproduction



ANATOMY ADVENTURES

TRIVIA GAME

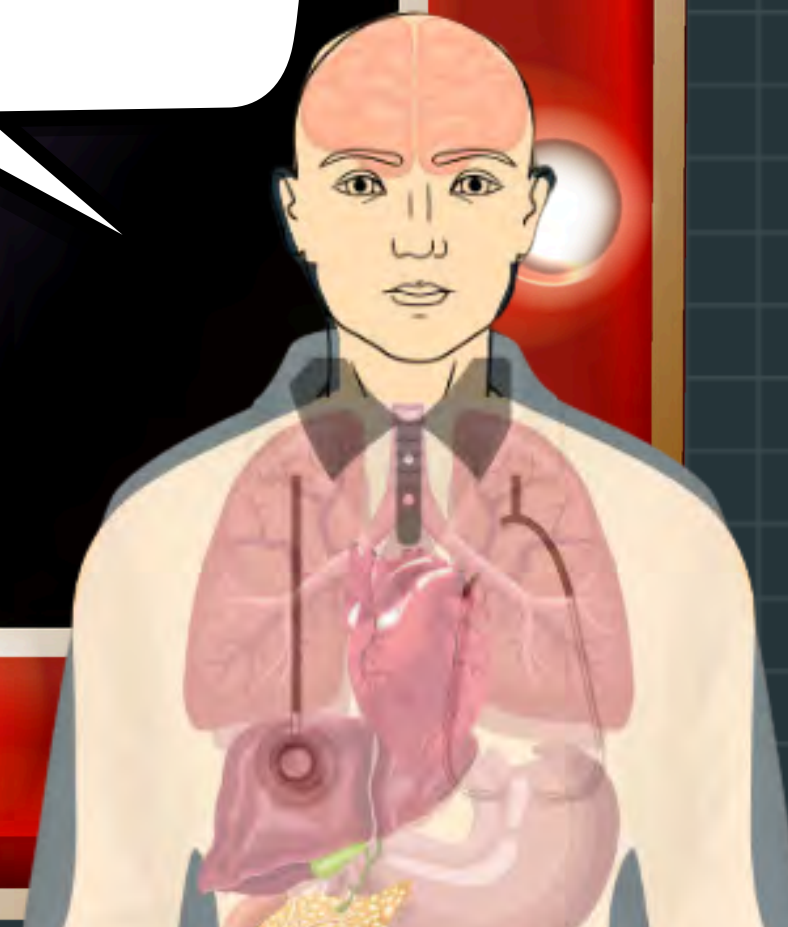




TRIVIA RULES

- Split into 4 teams.
- 30 seconds to discuss as a group and chose an answer.
- One student will be chosen to share the group's answer & why they chose that answer.
- Your answer will not count if you call out.

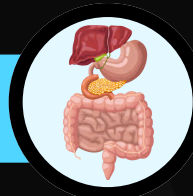
Be a good sport!
and
have FUN!



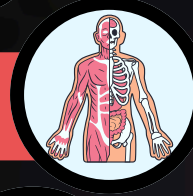
When answering, you must connect biological systems to biological processes.

BIOLOGICAL SYSTEMS

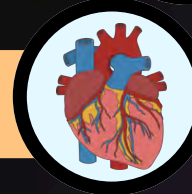
1. Digestive system



2. Musculoskeletal System



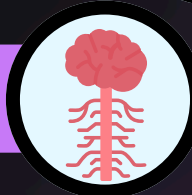
3. Circulatory System



4. Respiratory System



5. Nervous System



BIOLOGICAL PROCESSES

1. Movement



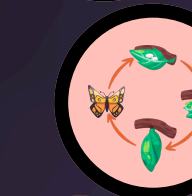
2. Nutrition



3. Respiration



4. Growth

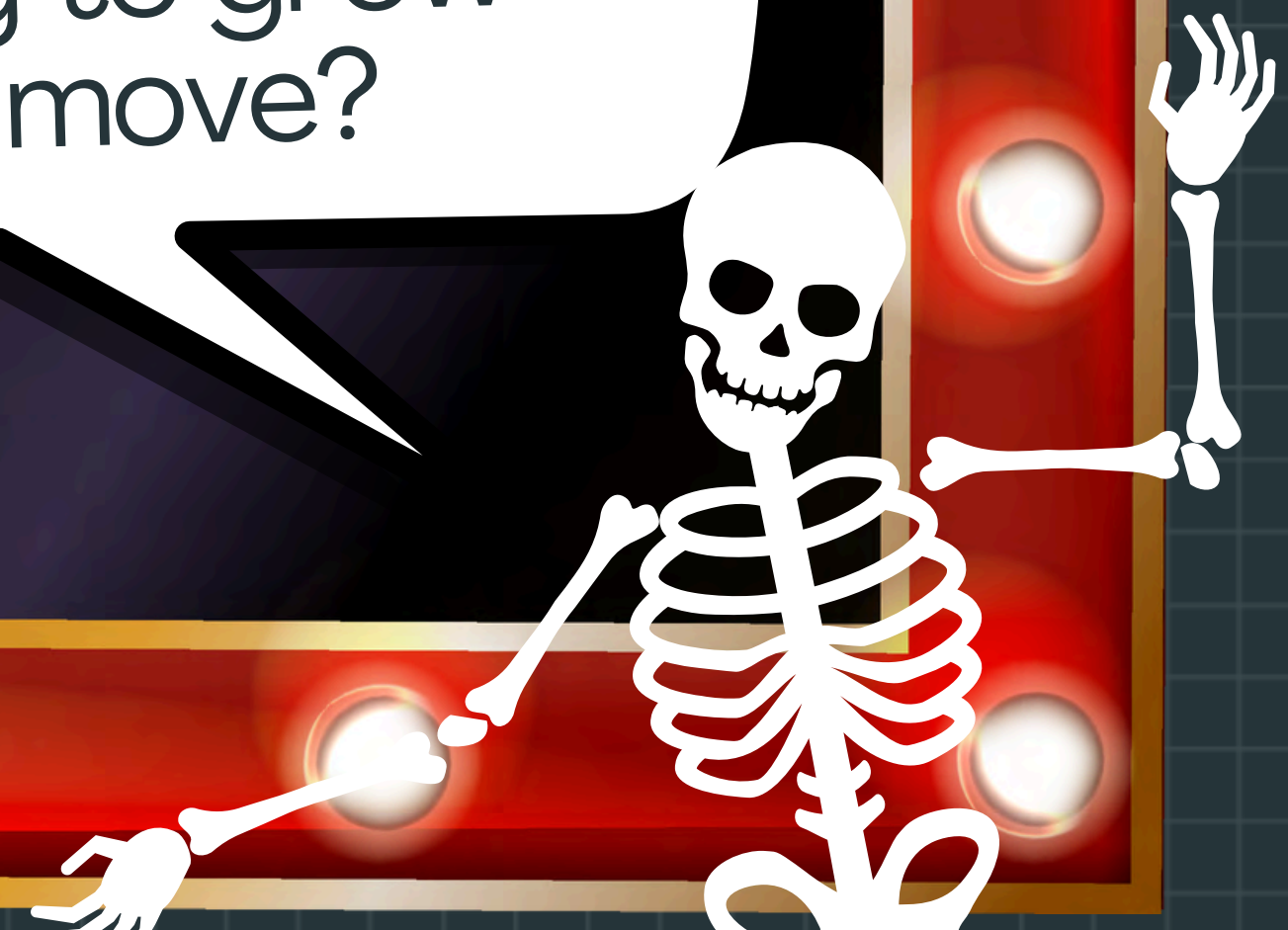
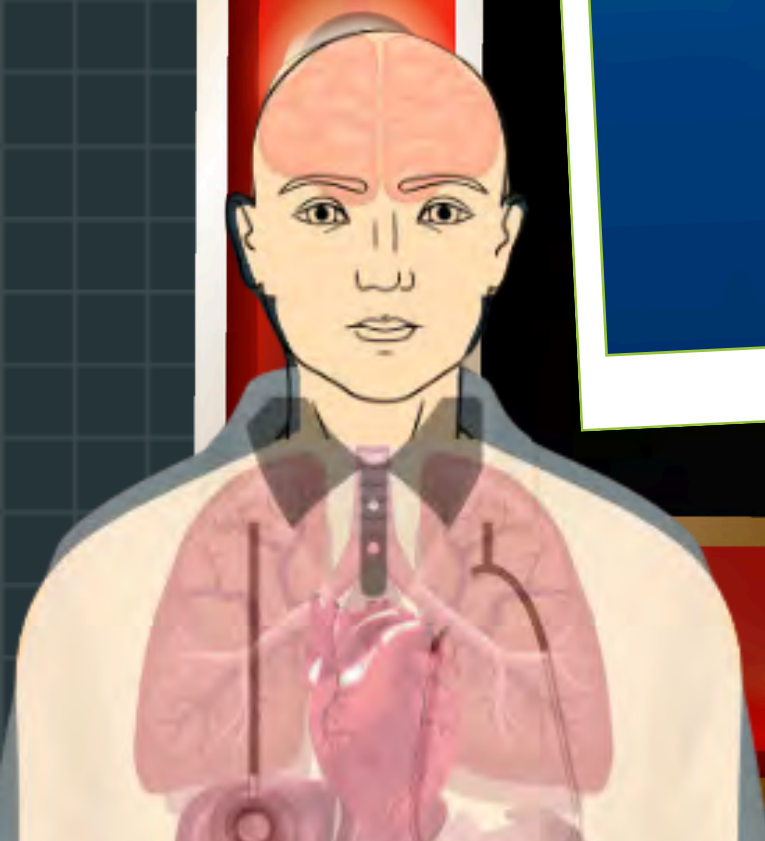


5. Reproduction



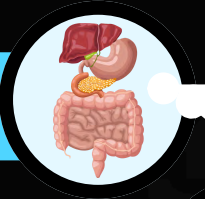
QUESTION # 1

Which system is MOST responsible for a blue whale's nutrition, providing energy to grow and move?

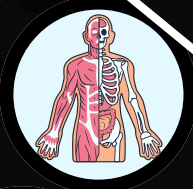


BIOLOGICAL SYSTEMS

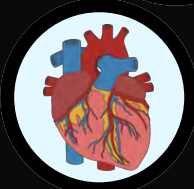
1. Digestive system



2. Musculoskeletal System



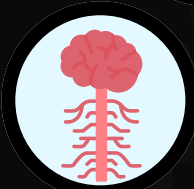
3. Circulatory System



4. Respiratory System



5. Nervous System



BIOLOGICAL PROCESSES



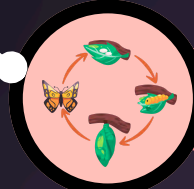
1. Movement



2. Nutrition



3. Respiration

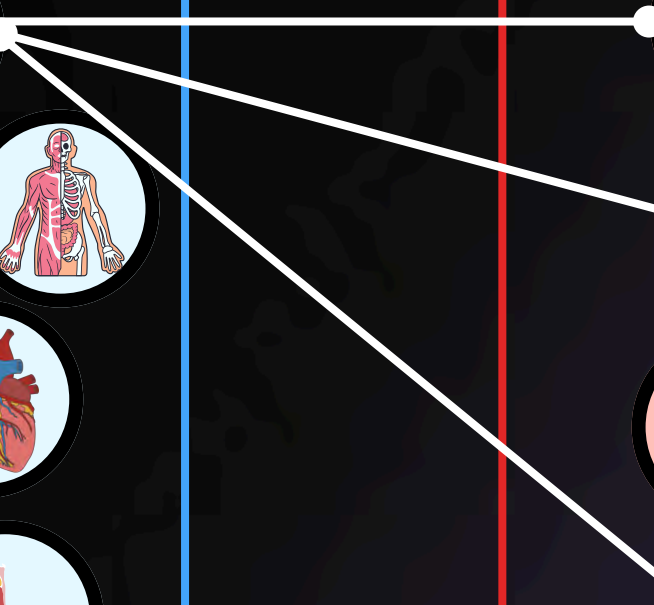


4. Growth



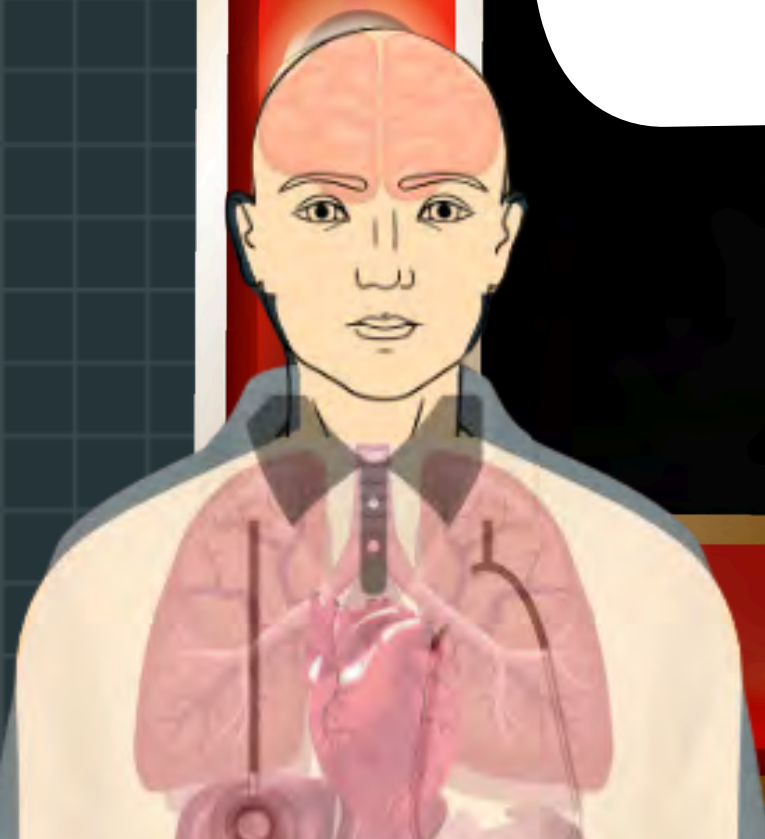
5. Reproduction

Let's connect biological systems to biological processes.



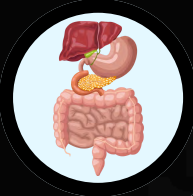
QUESTION # 2

Which system helps a dinosaur the **MOST** to move fast and grow so big?

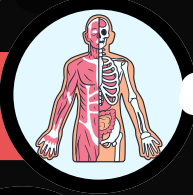


BIOLOGICAL SYSTEMS

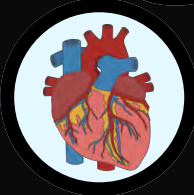
1. Digestive system



2. Musculoskeletal System



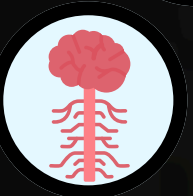
3. Circulatory System



4. Respiratory System



5. Nervous System



BIOLOGICAL PROCESSES



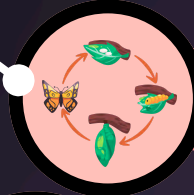
1. Movement



2. Nutrition



3. Respiration



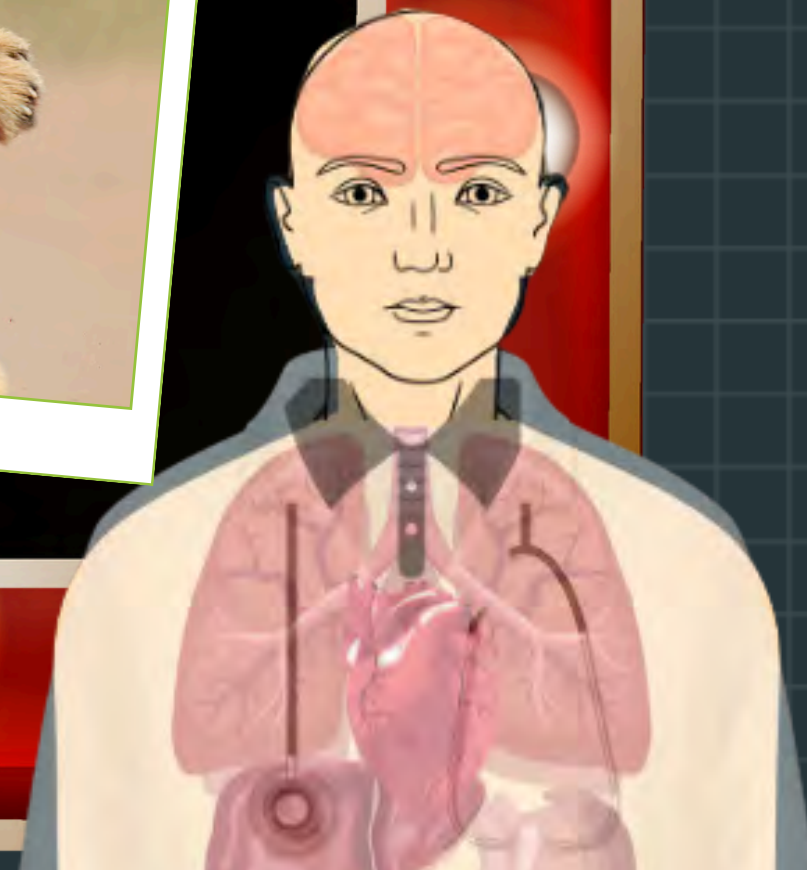
4. Growth



5. Reproduction

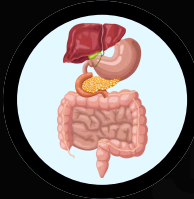
QUESTION # 3

Which 3 systems help a cheetah pump blood and breath oxygen while she runs and grows?

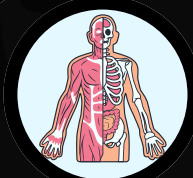


BIOLOGICAL SYSTEMS

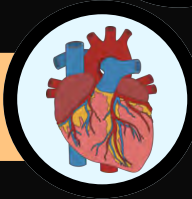
1. Digestive system



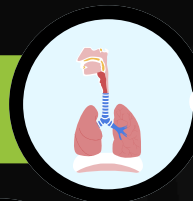
2. Musculoskeletal System



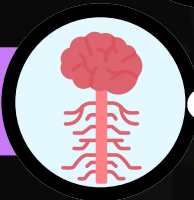
3. Circulatory System



4. Respiratory System



5. Nervous System



BIOLOGICAL PROCESSES



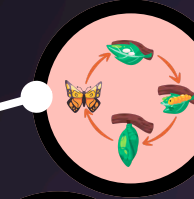
1. Movement



2. Nutrition



3. Respiration



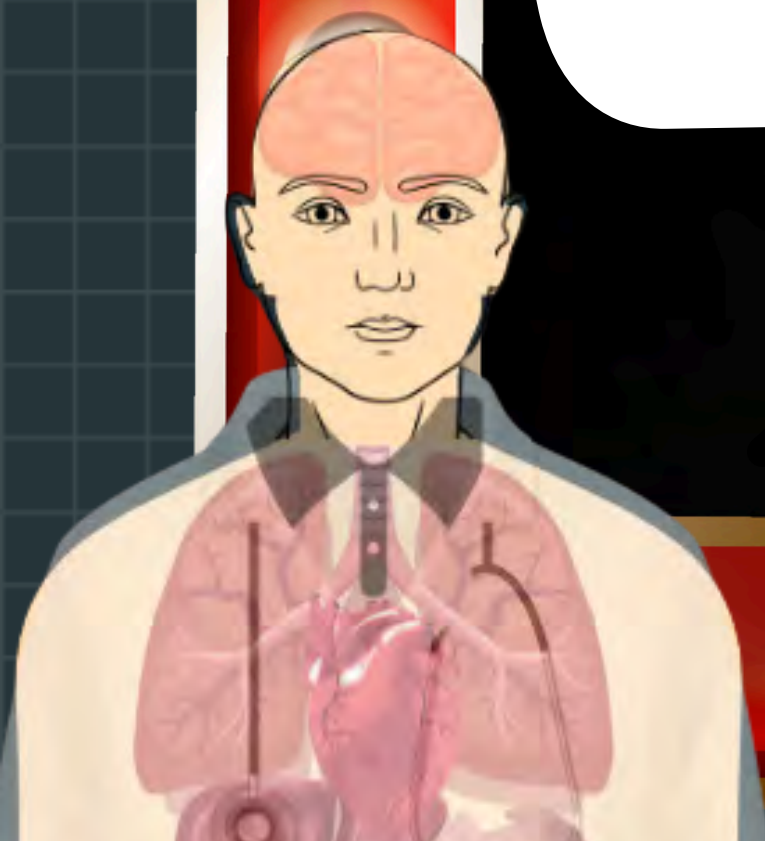
4. Growth



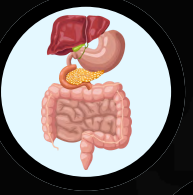
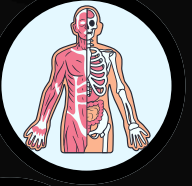
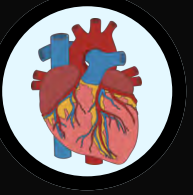
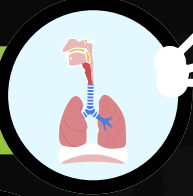
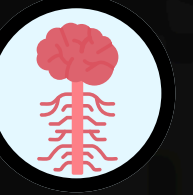
5. Reproduction

QUESTION # 4




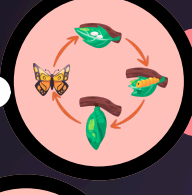

Which system allows butterflies to get oxygen while they grow and fly?

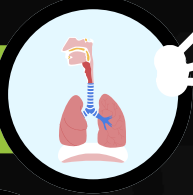


BIOLOGICAL SYSTEMS

- 1. Digestive system 
- 2. Musculoskeletal System 
- 3. Circulatory System 
- 4. Respiratory System** 
- 5. Nervous System 

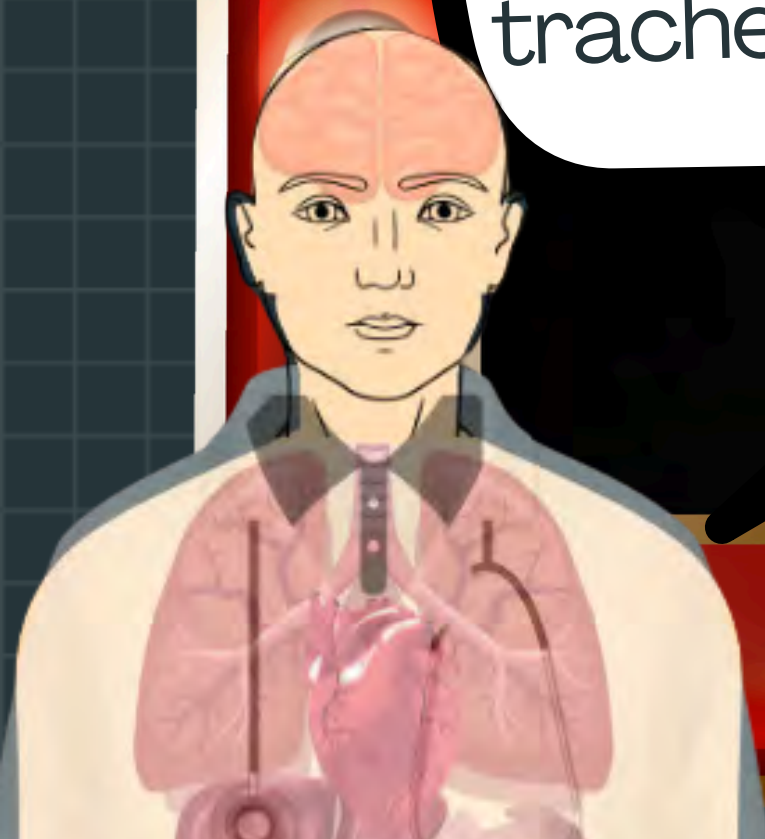
BIOLOGICAL PROCESSES

- 1. Movement** 
- 2. Nutrition 
- 3. Respiration** 
- 4. Growth** 
- 5. Reproduction 



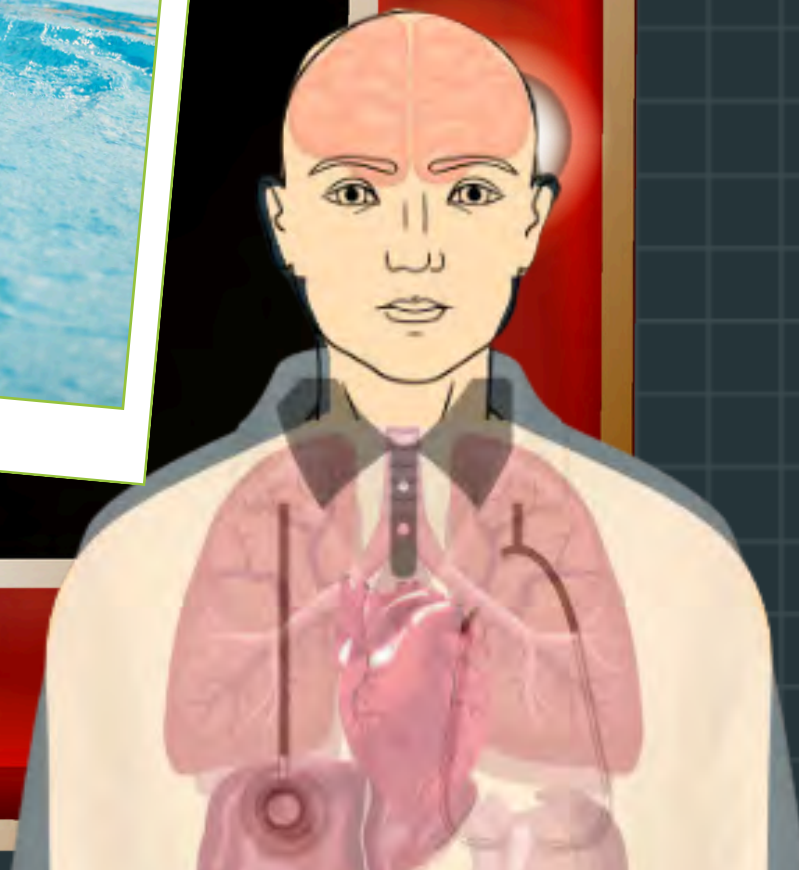
FUN FACT!

Butterflies do NOT have nose, mouth or lungs! They do not use their mouths to breathe. They breathe through tiny holes called SPIRACLES along the sides of their bodies. The oxygen flows directly into the trachea tube and down the body!



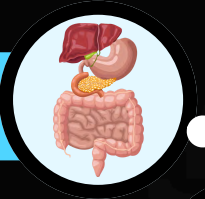
QUESTION # 5

Which systems work together to help us swim?
We need energy for the heart, lungs, and muscles!

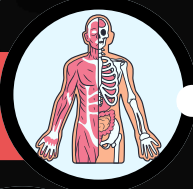


BIOLOGICAL SYSTEMS

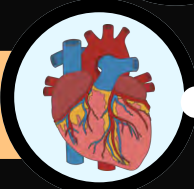
1. Digestive system



2. Musculoskeletal System



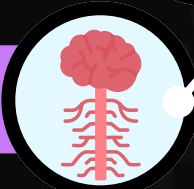
3. Circulatory System



4. Respiratory System

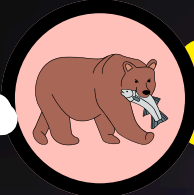


5. Nervous System



BIOLOGICAL PROCESSES

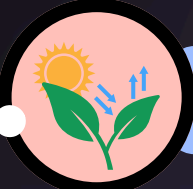
1. Movement



2. Nutrition



3. Respiration



4. Growth



5. Reproduction

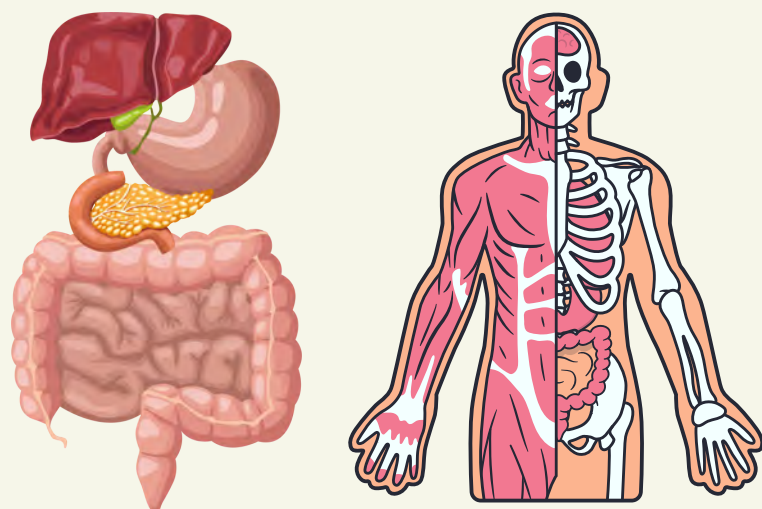


STATION OVERVIEW

4 Stations
20 minute rotations

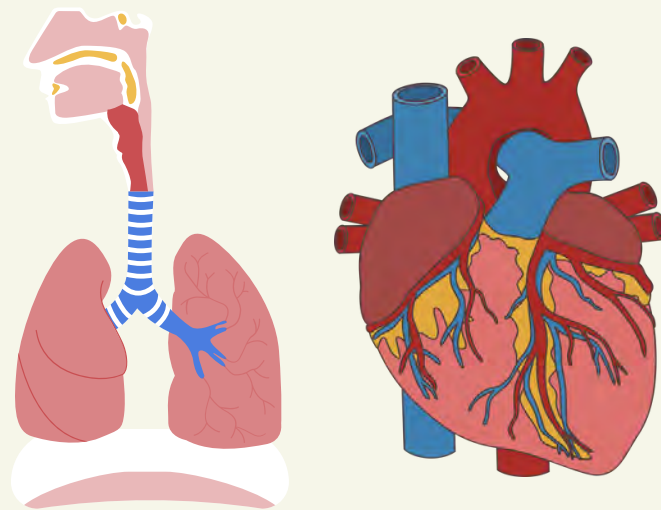
STATION # 1

Guts, Muscles & Bones – Oh My!



STATION # 2

Pump it Up!



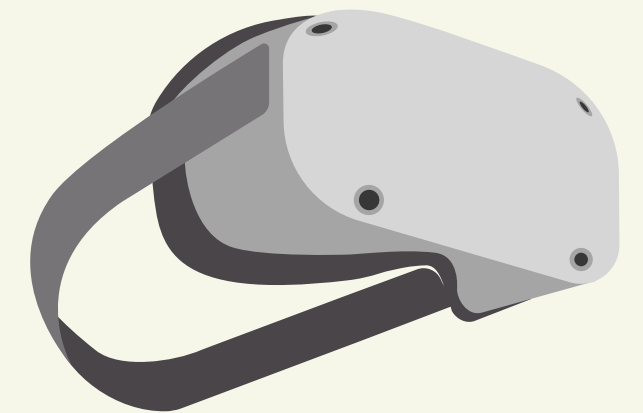
STATION # 3

Transport Systems in Plants



STATION # 4

VR Station:
Human Body Systems

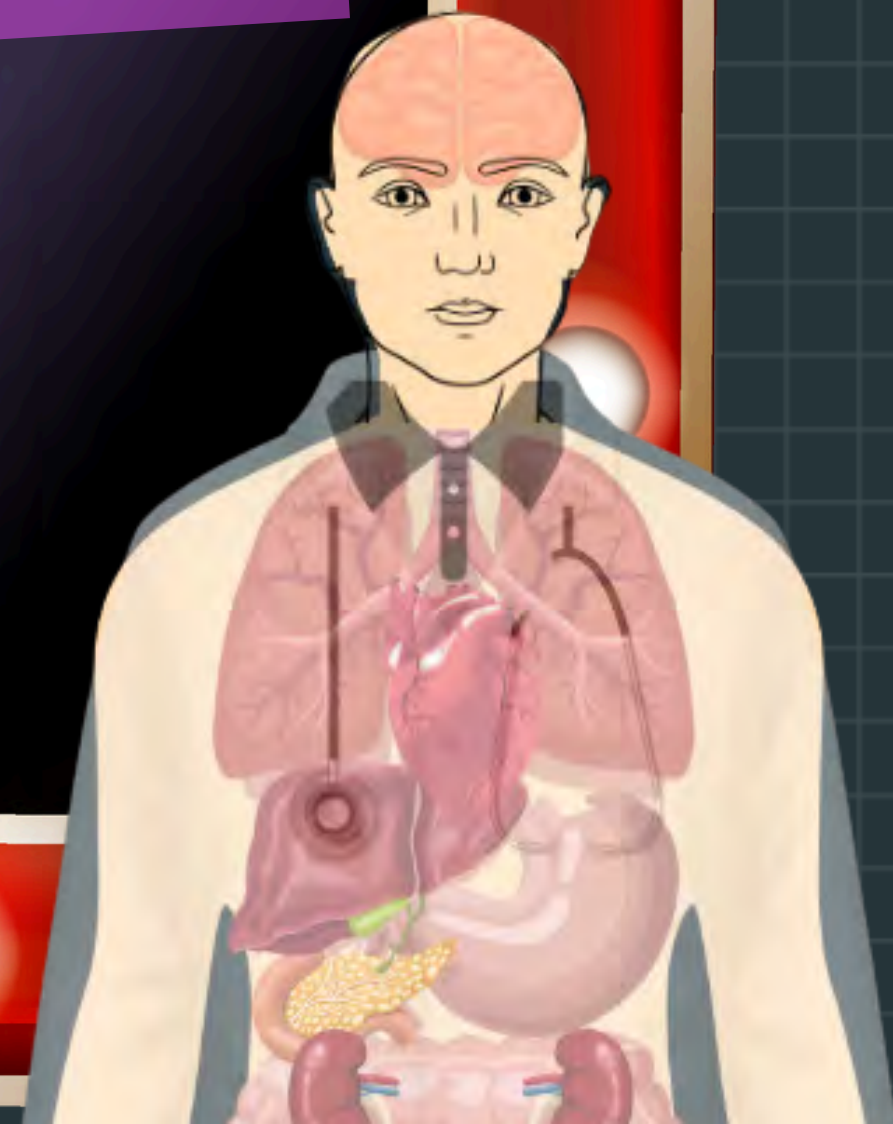


ANATOMY

ADVENTURES

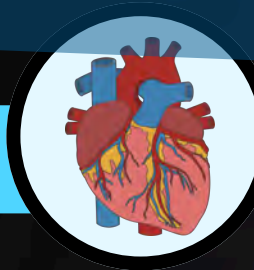
LIGHTNING

ROUND

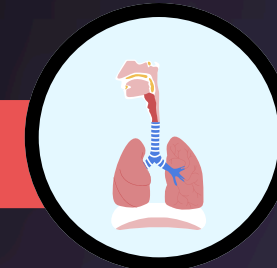


LIGHTNING ROUND

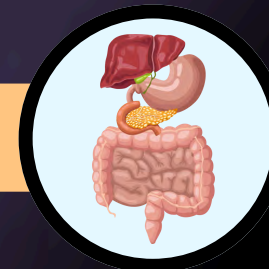
1. What is the function of the heart?



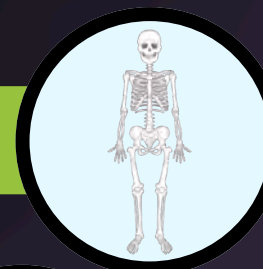
2. What is the function of the lungs?



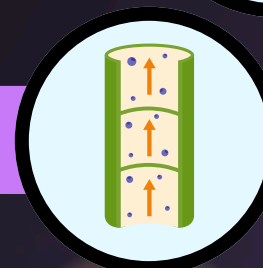
3. What is the function of the intestines?



4. What is the function of our skeleton?



5. What is the function of plant xylem?



PRIZE

TAKEAWAY



OVERVIEW OF HOW TO ASSEMBLE TAKE AWAY

You get to assemble and take your own Professor Organ home with you!



HUMAN MODEL ASSEMBLY INSTRUCTIONS

Reproduction or distribution of this document electronically or otherwise, in whole or in part, is strictly prohibited except for the purposes of this singular scheduled field trip.

MODEL PARTS

- Torso
- Base
- Rib Cage
- Stomach
- Lungs
- Heart
- Pancreas
- Large Intestine
- Small Intestine
- Liver

STEP 1
Click the large intestine in place in the bottom of the torso.

STEP 2
Click the small intestine into the large intestine.

STEP 3
Insert the tiny prongs from the pancreas into the openings in the stomach to connect them together.

STEP 4
Place the stomach and pancreas along the right side above the small intestine. Stomach faces out.

STEP 5
Place the liver on the left side.

STEP 6
Place the heart in the centre.

STEP 7
Click the left and right lungs in place around the heart.

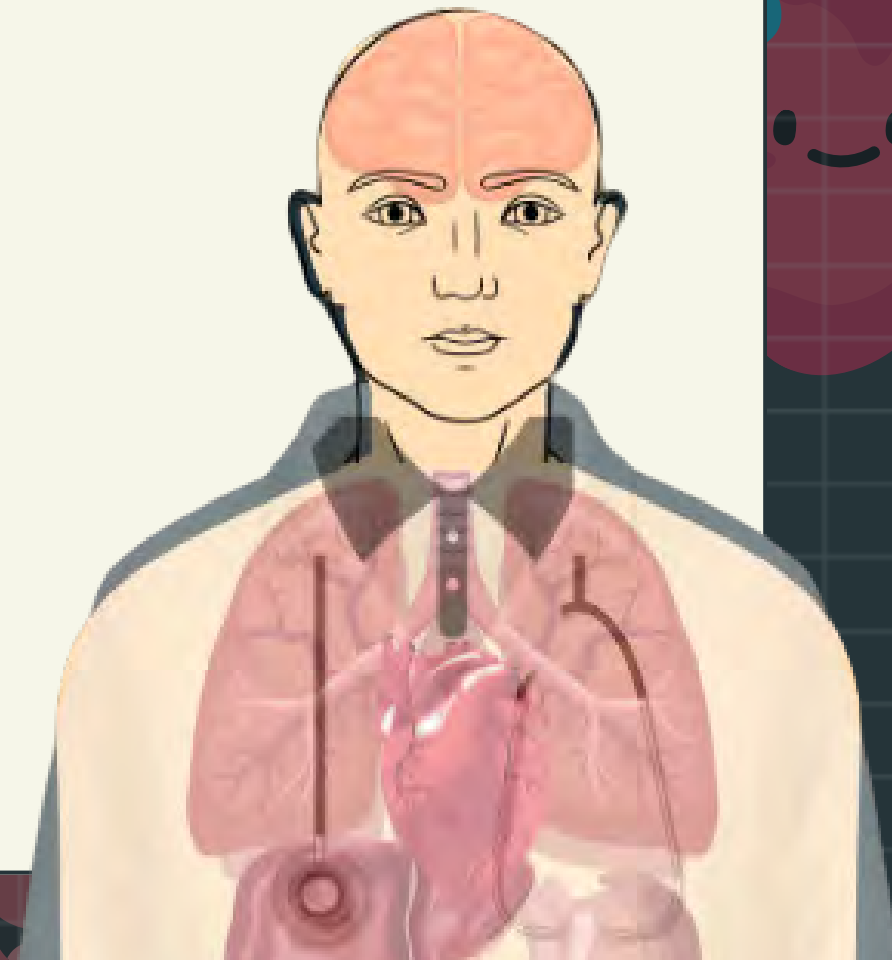
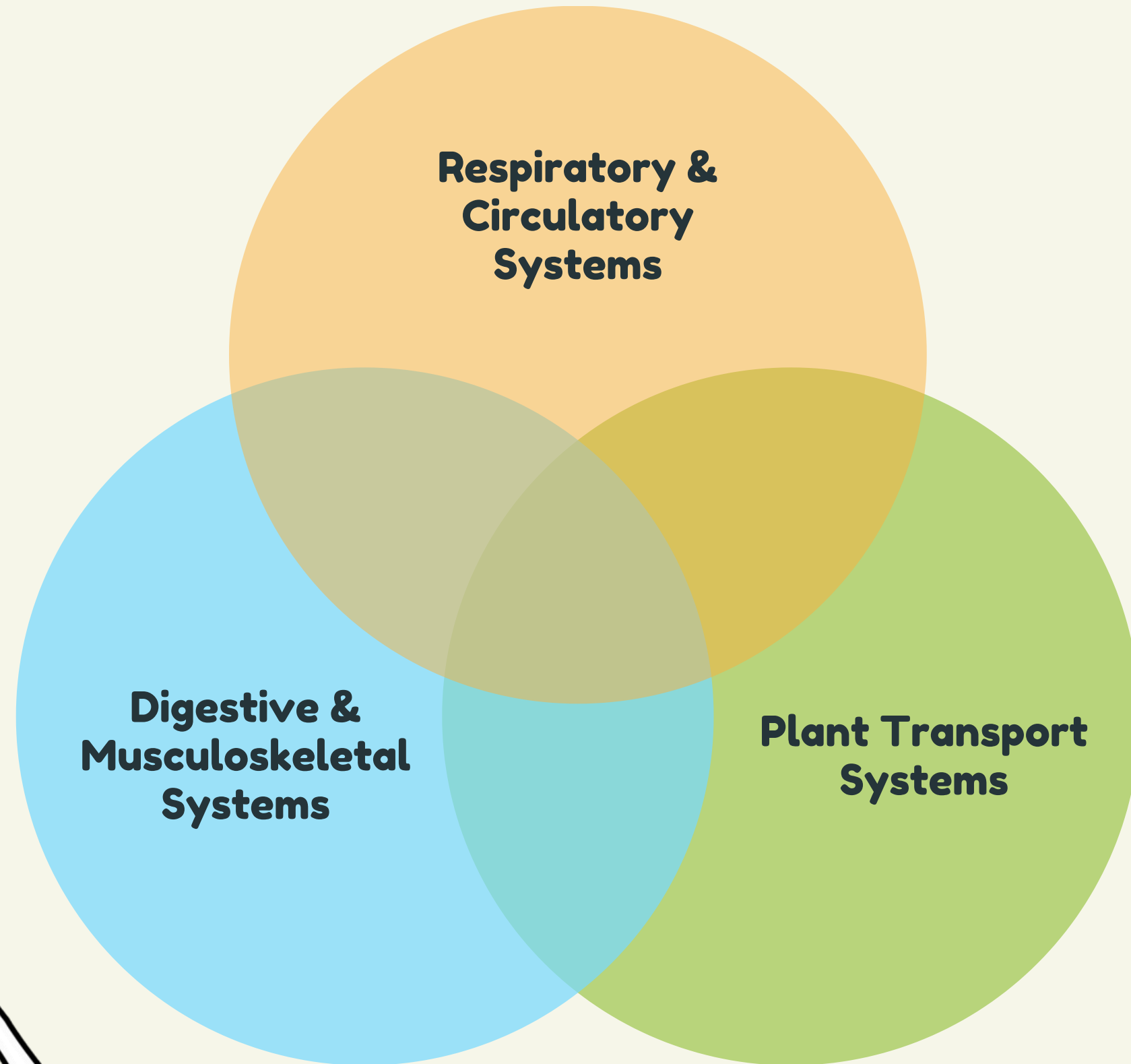
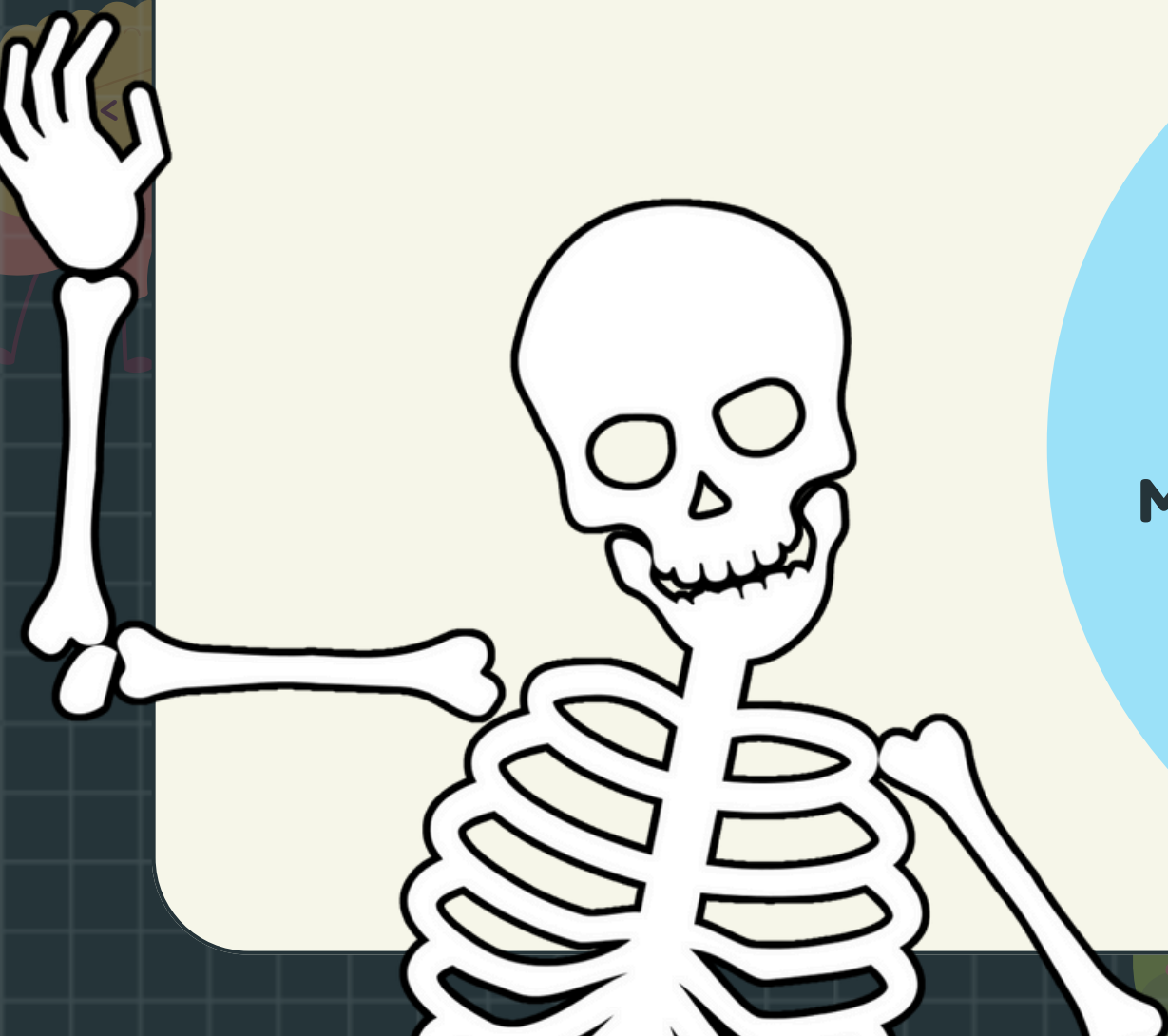
STEP 8
Place the heart in the centre.

STEP 9
Insert the Human Model into the base.

Teacher's Pet ©



CONCLUSION: HOW ARE ORGANISMS SUPPORTED BY VITAL BIOLOGICAL PROCESSES & SYSTEMS?





THANK

YOU!

