

LIVE

Teacher's Pet

GOVERNMENTS IN ACTION:

THE ALBERTA WAY



BREAKING NEWS FLASH!

# WHAT ARE THE OFFICIAL PROVINCIAL COLOURS OF ALBERTA?

**BLUE  
=  
SKY**

**GOLD  
=  
PRAIRIES**



# INTRODUCTION

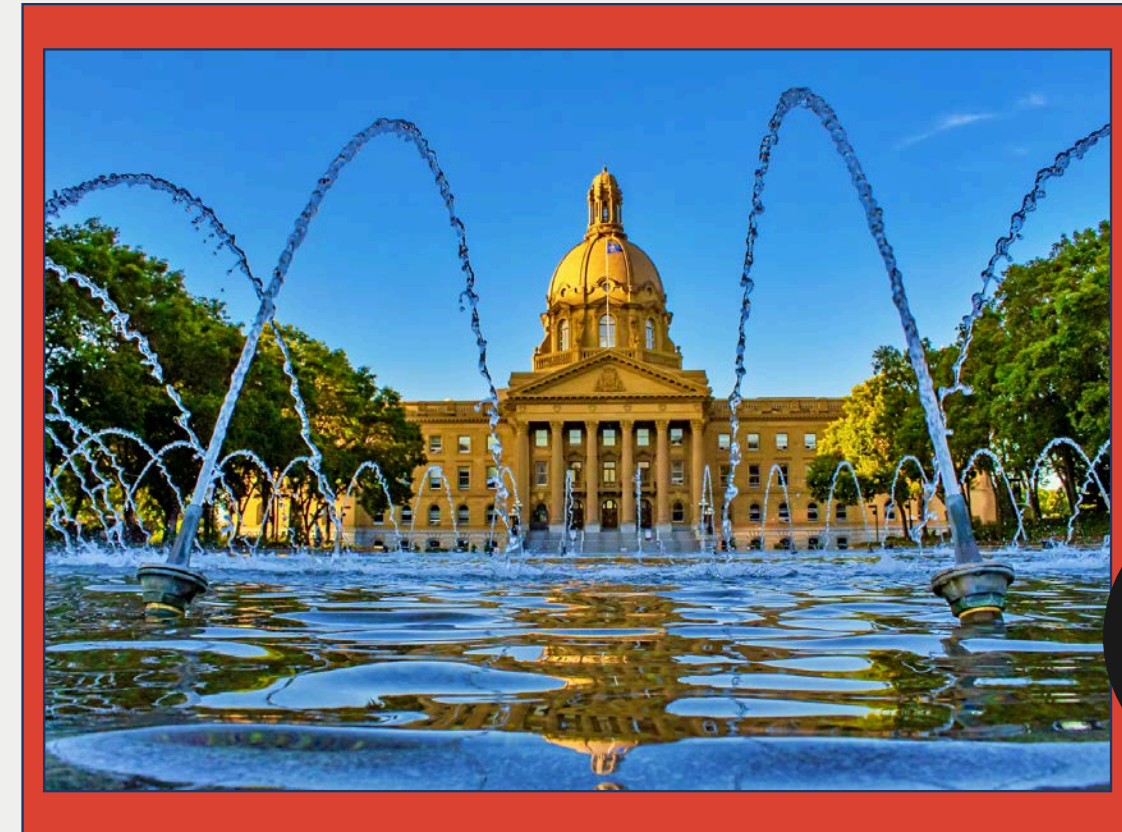
DID YOU KNOW WE HAVE 2 LEVELS OF GOVERNMENT IN ALBERTA?

## MUNICIPAL LEVEL = LOCAL



## PROVINCIAL LEVEL

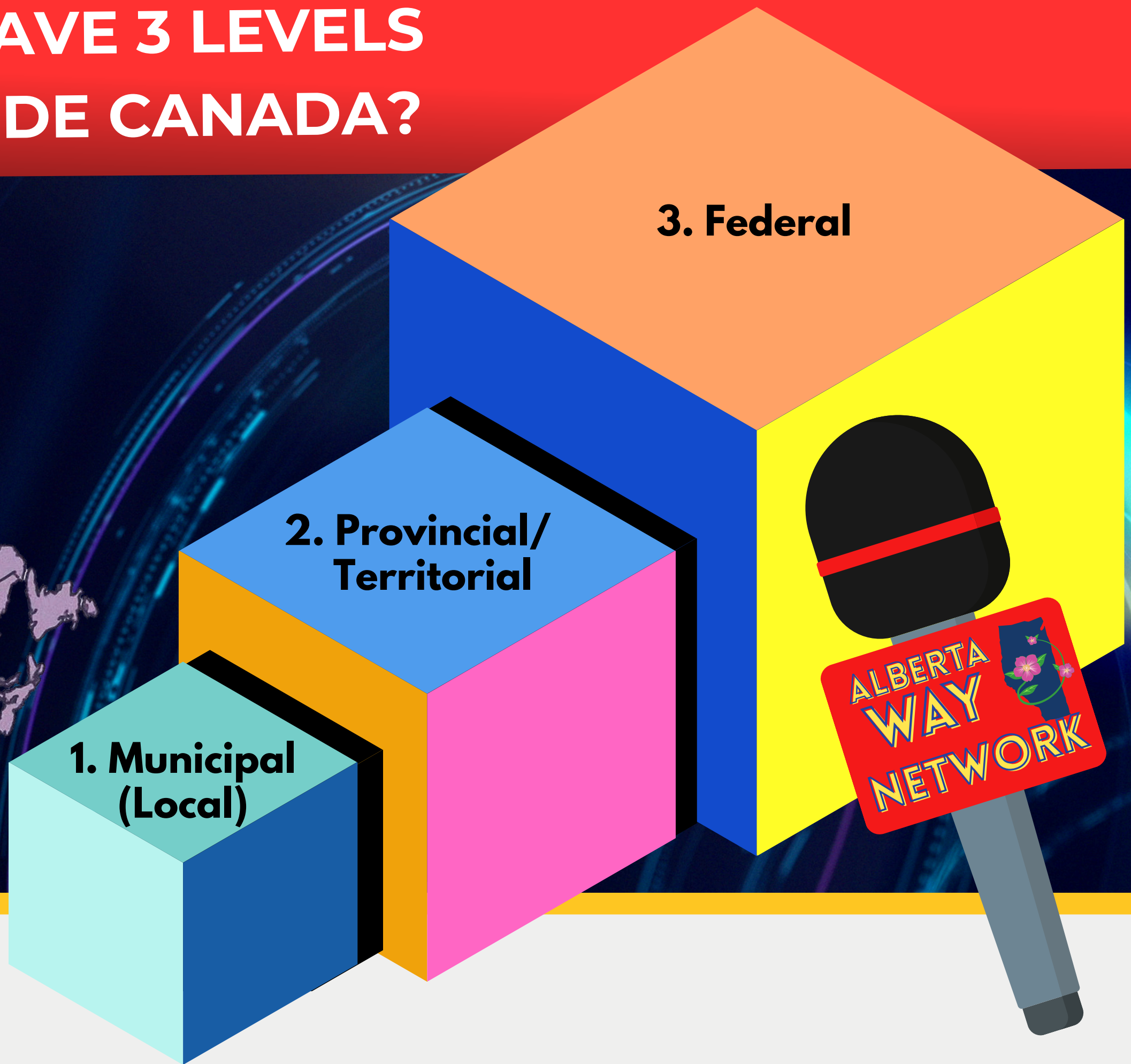
DECISIONS AFFECT ALL ALBERTANS



PROVINCIAL AND MUNICIPAL GOVERNMENTS ARE RESPONSIBLE FOR SERVICES & LEADERSHIP IN OUR COMMUNITIES



# DID YOU KNOW WE HAVE 3 LEVELS OF GOVERNMENT INSIDE CANADA?



**LIVE**

# **BREAKING NEWS!**



- STATION 1 - GOVERNMENT LEADERS**
- STATION 2 - GOVERNMENT SERVICES**
- STATION 3 - VOTING AND ELECTIONS**
- STATION 4 - PROVINCIAL SYMBOLS**

LIVE

REWARD UNLOCKED!



WILD ROSE

LIVE



**REWARD UNLOCKED!**



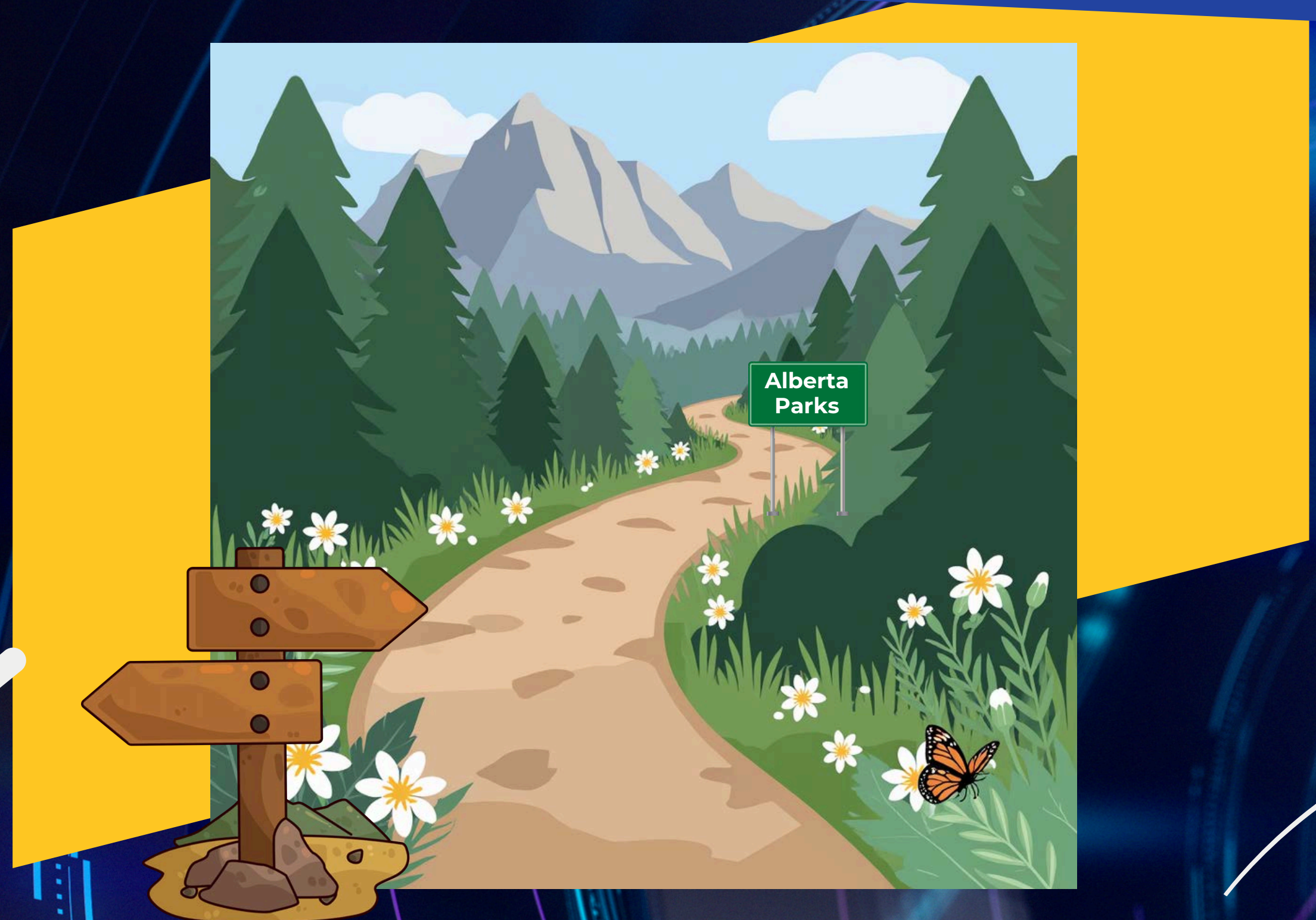
**BIG HORN SHEEP**



**TAKE ACTION!**

**LIVE**

**MOVEMENT BREAK**



LIVE



REWARD UNLOCKED!



COAT OF ARMS

LIVE



**REWARD  
UNLOCKED!**



**MOTTO OF ALBERTA:**

*fortis et liber*

**STRONG AND FREE**



# TAKE ACTION!

LIVE

## SERVICES CHARADES



Education



Tourism & Sport

Water Services



Local Police Departments



Health Care



Provincial Parks



Fire Departments



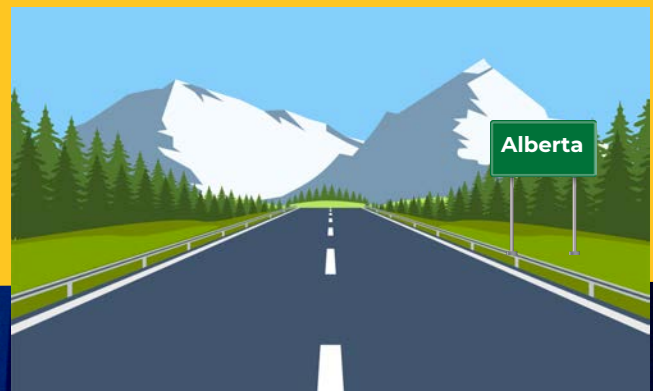
Agriculture



Libraries



Transportation



Local Parks



Local Roads & Sidewalks



LIVE

**QUIZ TIME!**

**#1. WHO IS THE LOCAL LEADER  
OF AN INDIGENOUS GROUP?**



**A**

**MAYOR**

**B**

**CHIEF**

**C**

**COUNCILLOR**

**D**

**PREMIER**



LIVE

**QUIZ TIME!**

**#2. WHO IS THE LEADER OF THE  
PROVINCIAL GOVERNMENT OF ALBERTA?**



**A**

**LIEUTENANT-  
GOVERNOR**

**B**

**PREMIER**

**C**

**MLA**

**D**

**MINISTER**

LIVE

**QUIZ TIME!**

**#3. WHICH TYPE OF GOVERNMENT MAKES DECISIONS FOR LOCAL SCHOOLS?**



**A**

**CITY COUNCIL**

**B**

**SCHOOL BOARD**

**C**

**LEGISLATIVE ASSEMBLY**

**D**

**CABINET**

LIVE

# QUIZ TIME!



**#4. WHO IS THE LOCAL LEADER OF A CITY & THE HEAD OF CITY COUNCIL?**



**A**

**LIEUTENANT  
GOVERNOR**

**B**

**COUNCILLOR**

**C**

**MAYOR**

**D**

**PREMIER**

LIVE

# QUIZ TIME!



**#5. WHO IS A MUNICIPAL LEADER THAT REPRESENTS A NEIGHBORHOOD AND IS PART OF A LOCAL COUNCIL?**



**A**

**PREMIER**

**B**

**CHIEF**

**C**

**MAYOR**

**D**

**COUNCILLOR**

LIVE

# QUIZ TIME!

#6. WHICH PROVINCIAL LEADERS ARE RESPONSIBLE FOR DIFFERENT AREAS OF GOVERNMENT AND MAKE UP THE PROVINCIAL CABINET?



**A**

LIEUTENANT-  
GOVERNOR

**B**

PREMIER

**C**

MAYORS

**D**

MINISTERS



LIVE

QUIZ TIME!



#7. WHO IS THE PROVINCIAL LEADER THAT REPRESENTS THE CROWN?



A

LIEUTENANT-  
GOVERNOR

B

PREMIER

C

MLA

D

MINISTER

LIVE

**QUIZ TIME!**

**#8. WHICH LEADERS REPRESENT THE PEOPLE OF ALBERTA AND PARTICIPATE IN DEBATES IN THE PROVINCIAL LEGISLATURE?**



**A**

**LIEUTENANT-  
GOVERNOR**

**B**

**PREMIER**

**C**

**MLAs**

**D**

**COUNCILLORS**



LIVE

QUIZ TIME!

ALBERTA  
WAY  
NETWORK

#9. HOW DO WE CHOOSE WHICH  
PEOPLE WILL BE GOVERNMENT  
LEADERS?



A

ROCK, PAPER,  
SCISSORS

B

ELECTION

C

VOTE

D

SELF  
DECLARED

LIVE

QUIZ TIME!

BONUS QUESTION!

WHO IS THE PROVINCE OF ALBERTA NAMED AFTER?

A

QUEEN  
VICTORIA

B

KING  
CHARLES

C

PRINCE  
ALBERT

D

PRINCESS  
ALBERTA

LIVE

THE ALBERTA WAY

THANK YOU!

