



A View from Above

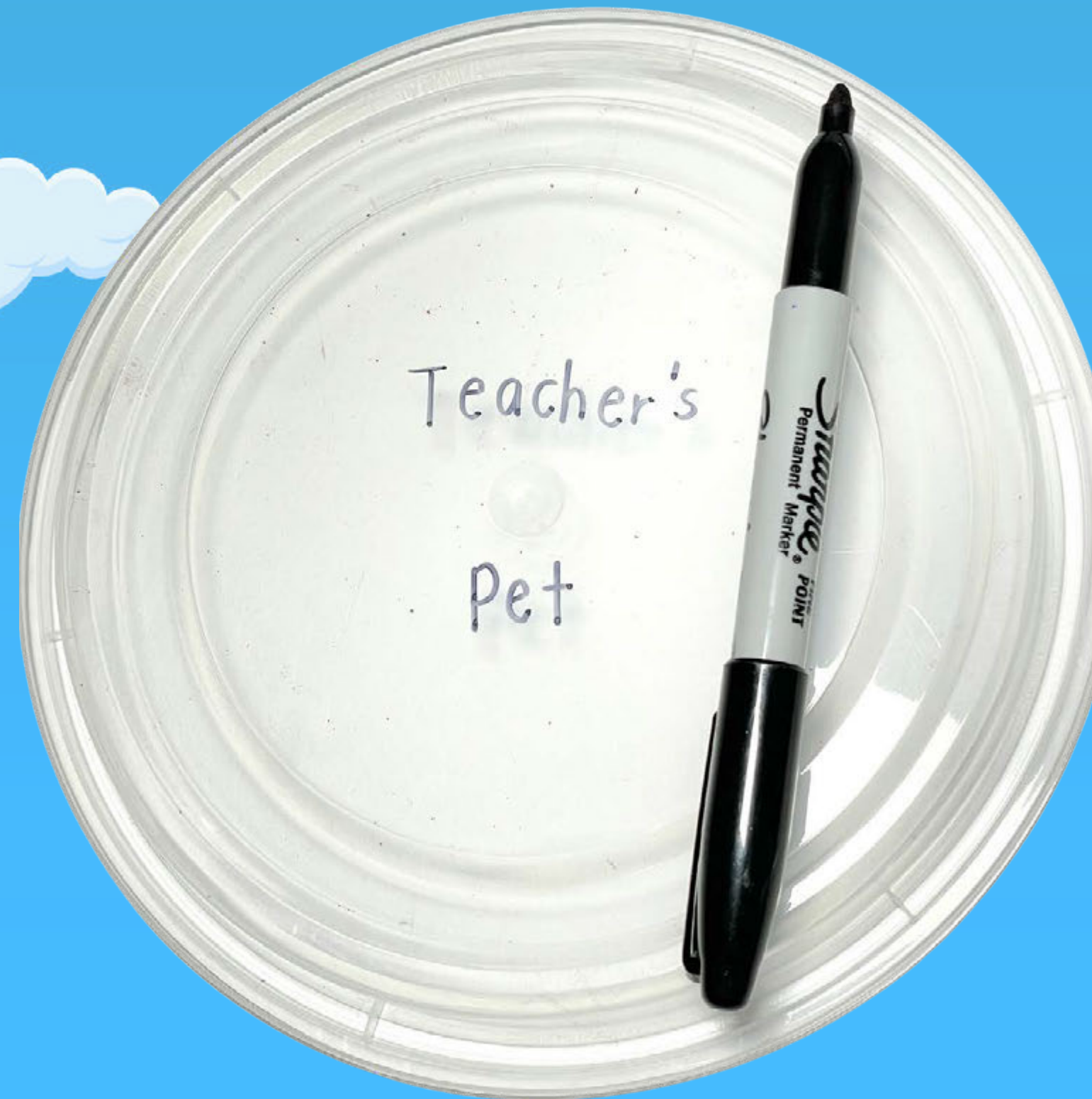
Teacher's Pet

Landform Model Supplies

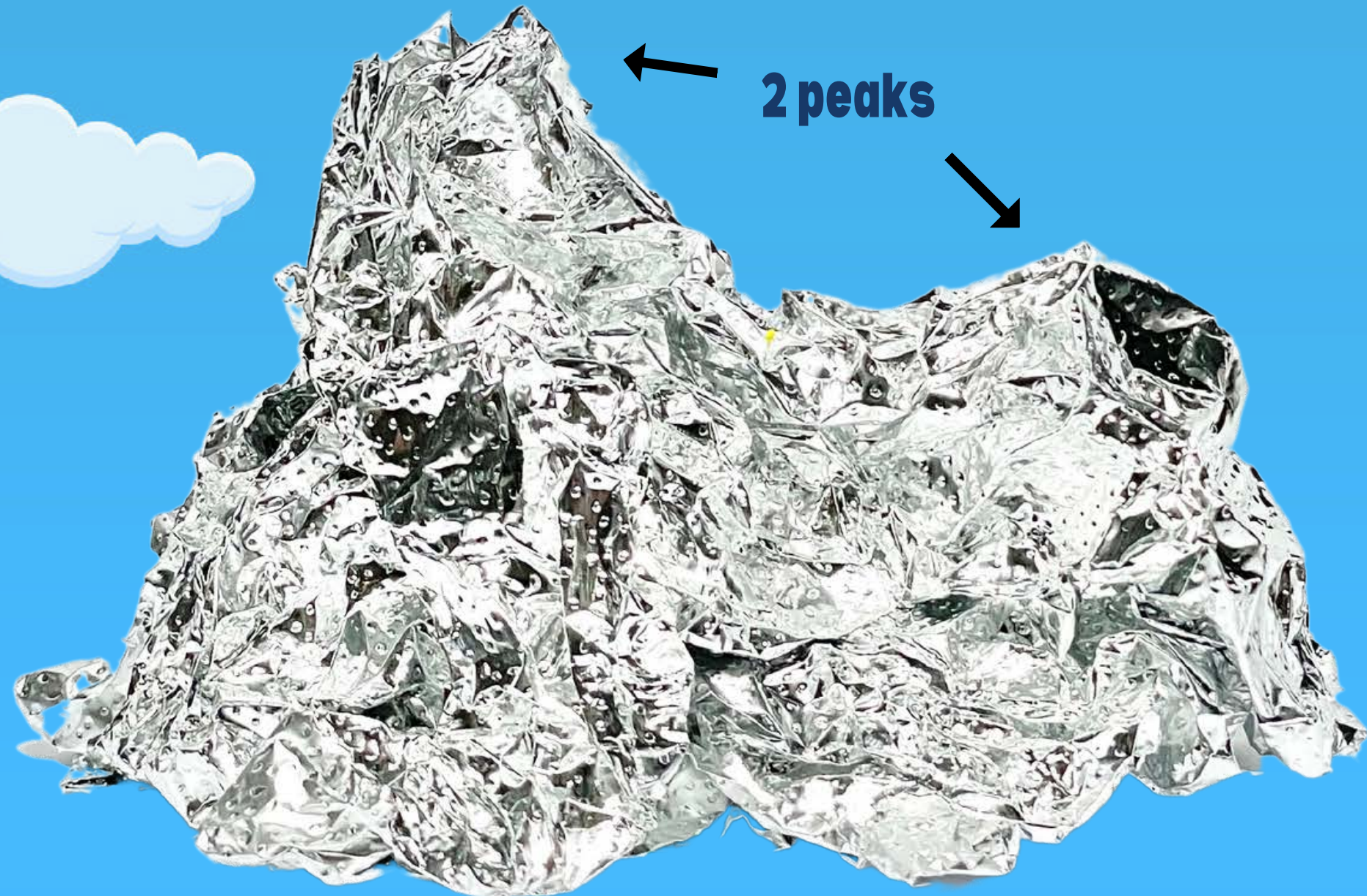


Tin foil sheet
5 Clay Pieces
Plastic container
Craft stick

Step 1: Write your name on outside of the lid



Step 2: Scrunch large tin foil to form mountain and glacier



Mountain and Glacier



Step 3: Scrunch strip of tin foil to form a plateau



Plateau

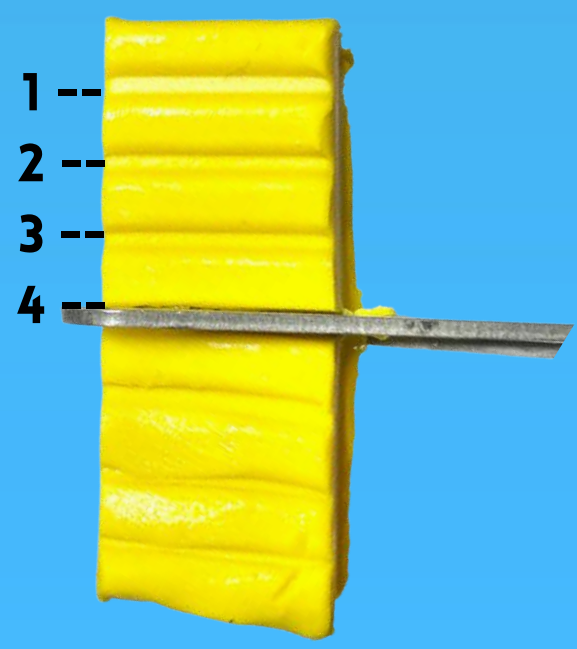


Plateau



Step 4: Cut yellow clay 4 lines down and create base for mountain and glacier.

A



B



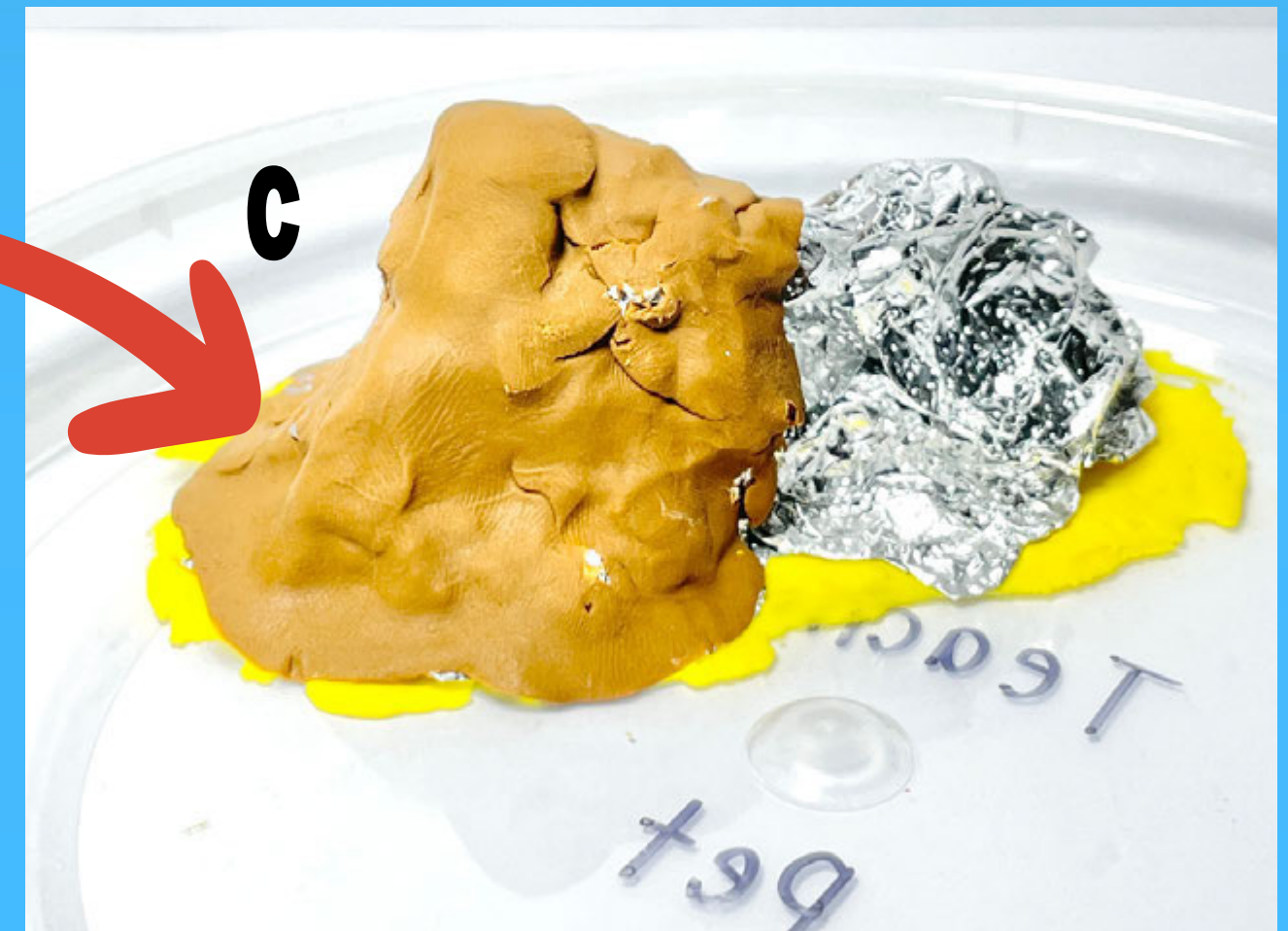
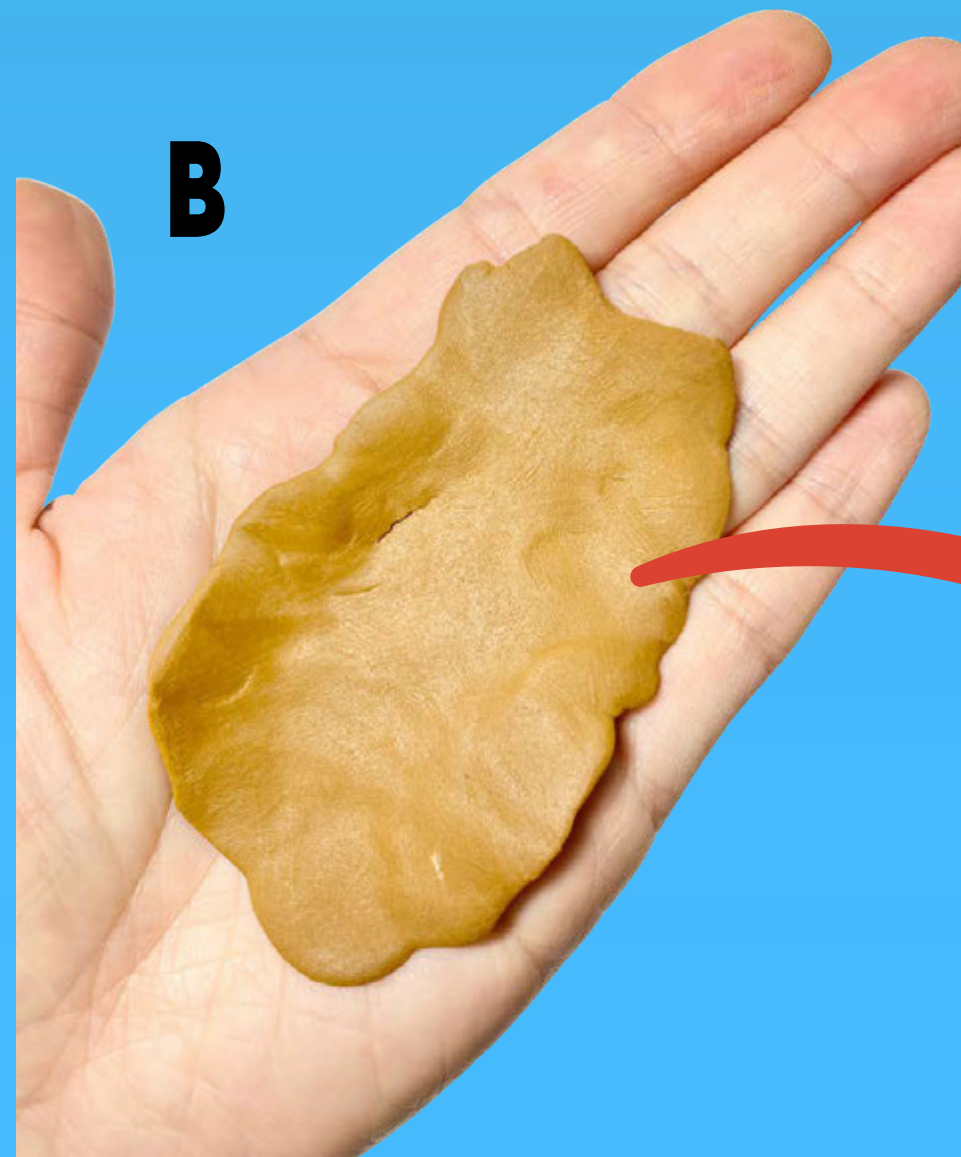
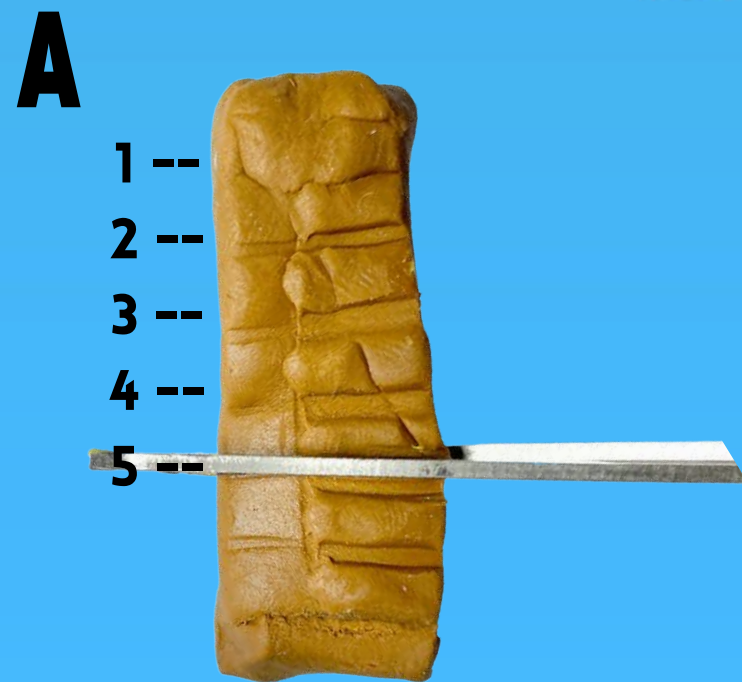
C



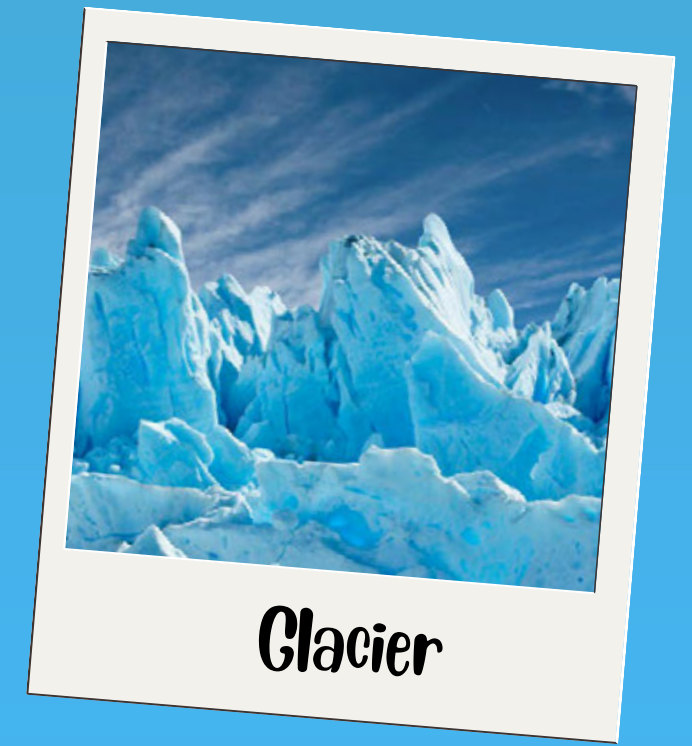
Check that the dome can close



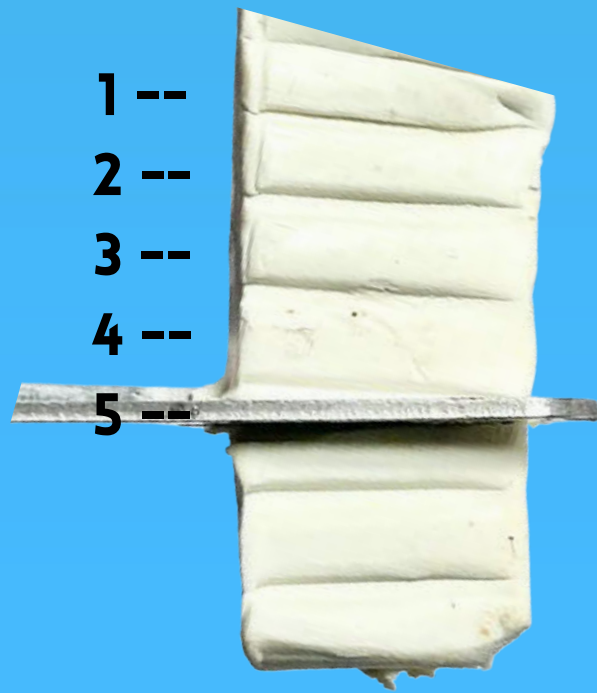
**Step 5: Cut brown clay 5 lines down. Set smaller piece aside.
Create a pancake to lay over the mountain.**



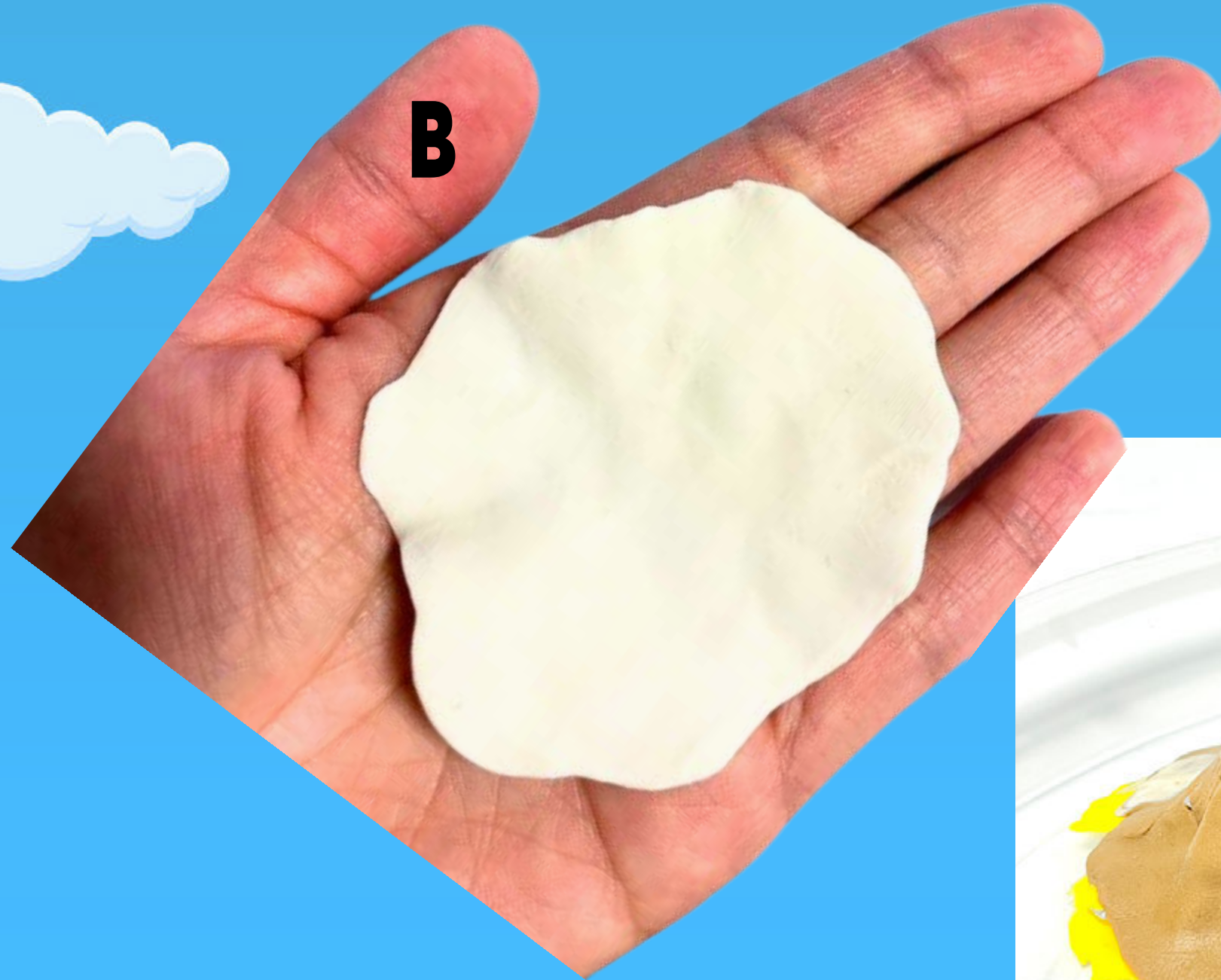
**Step 6: Cut white clay 5 lines down. Set smaller piece aside.
Create a pancake to lay over the glacier.**



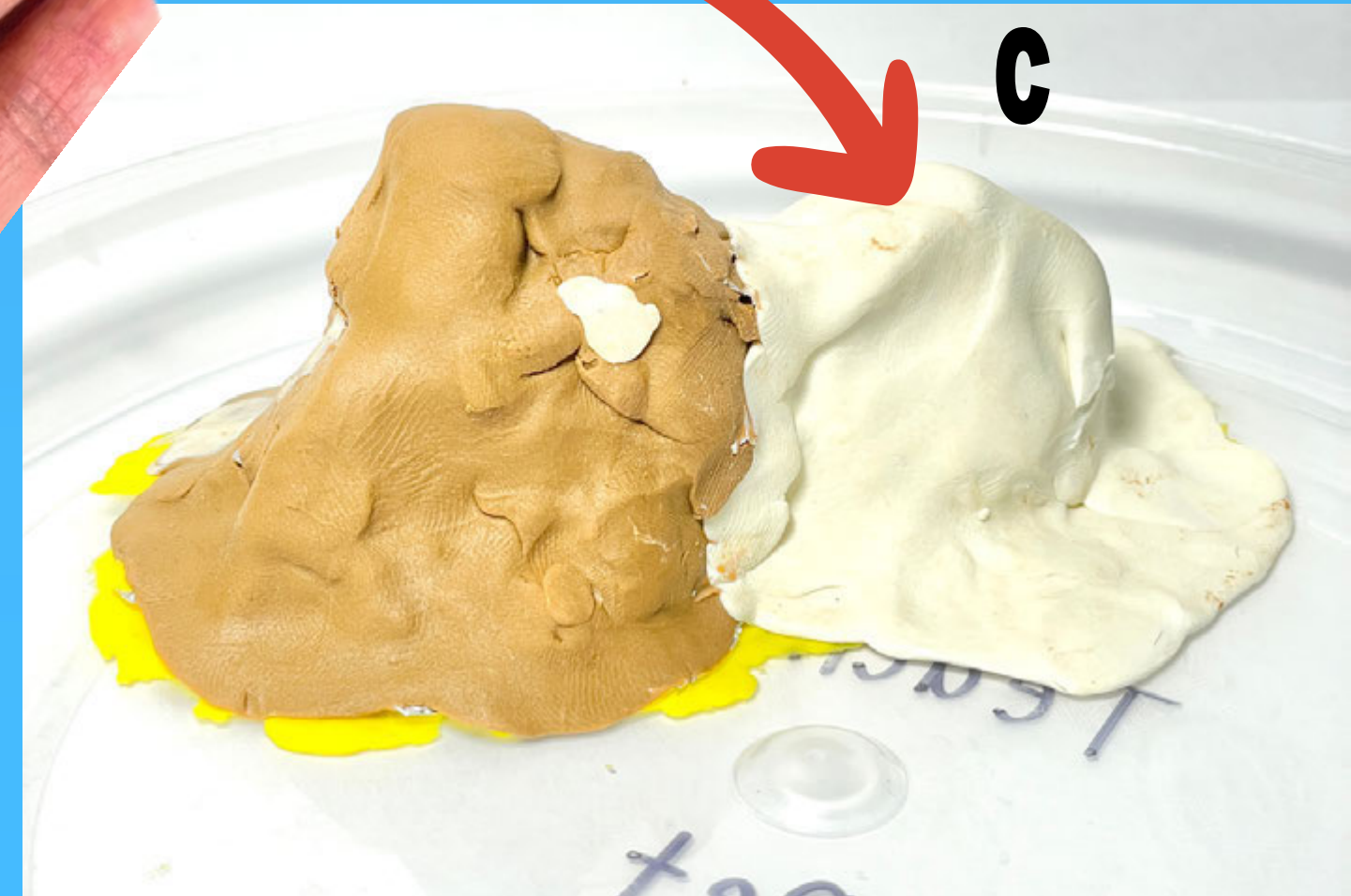
A



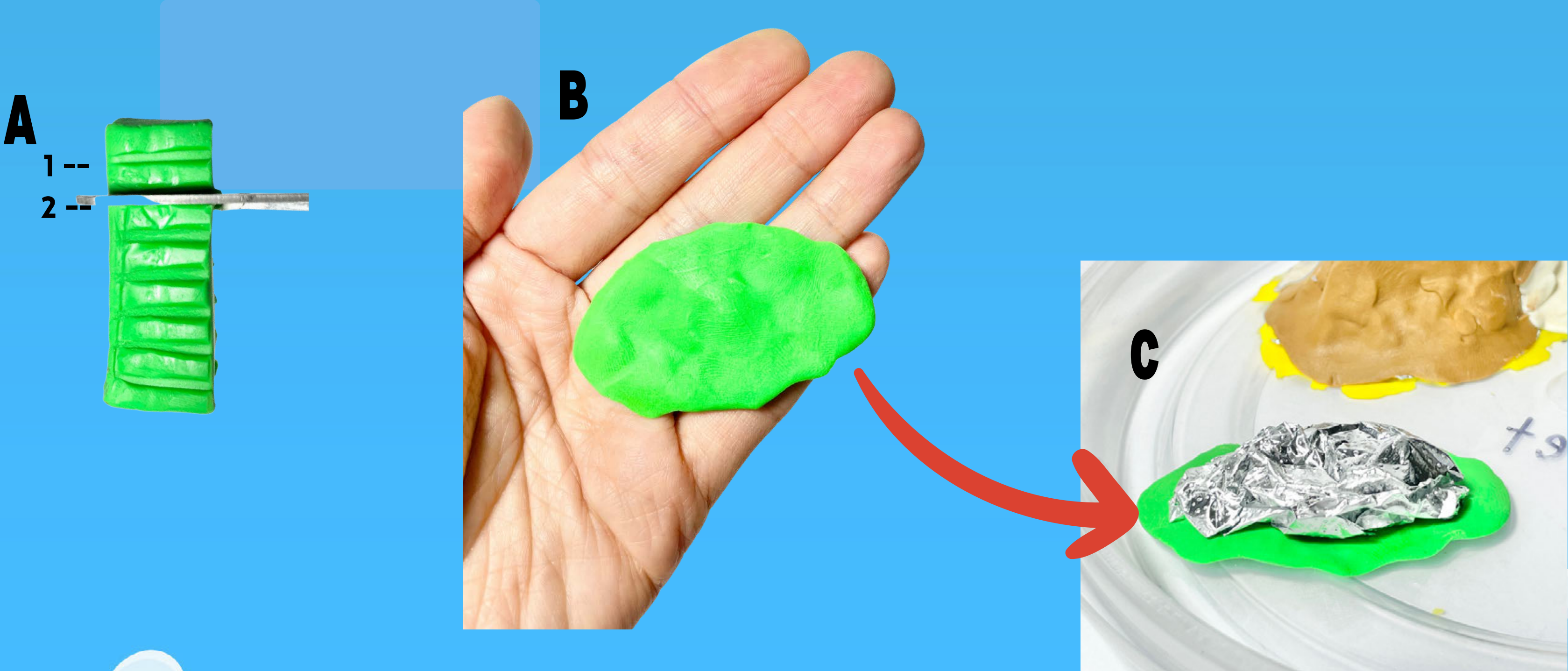
B



C



Step 7: Cut green clay 2 lines down. Using the smaller piece, make a pancake for the base of the plateau.

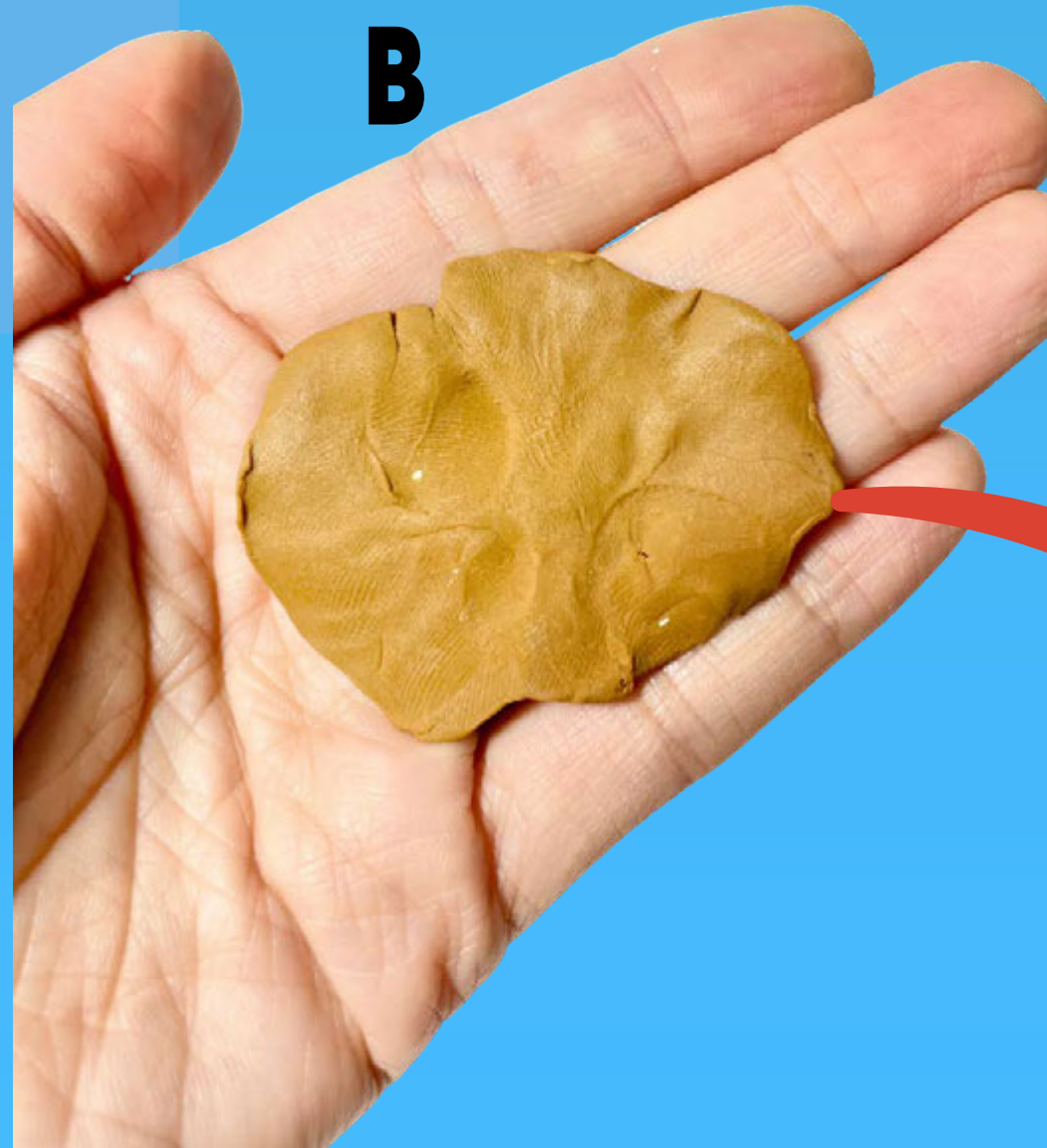


Step 8: Rip pea-size amount of brown clay and set it aside. Using the larger piece make a pancake to cover your plateau.

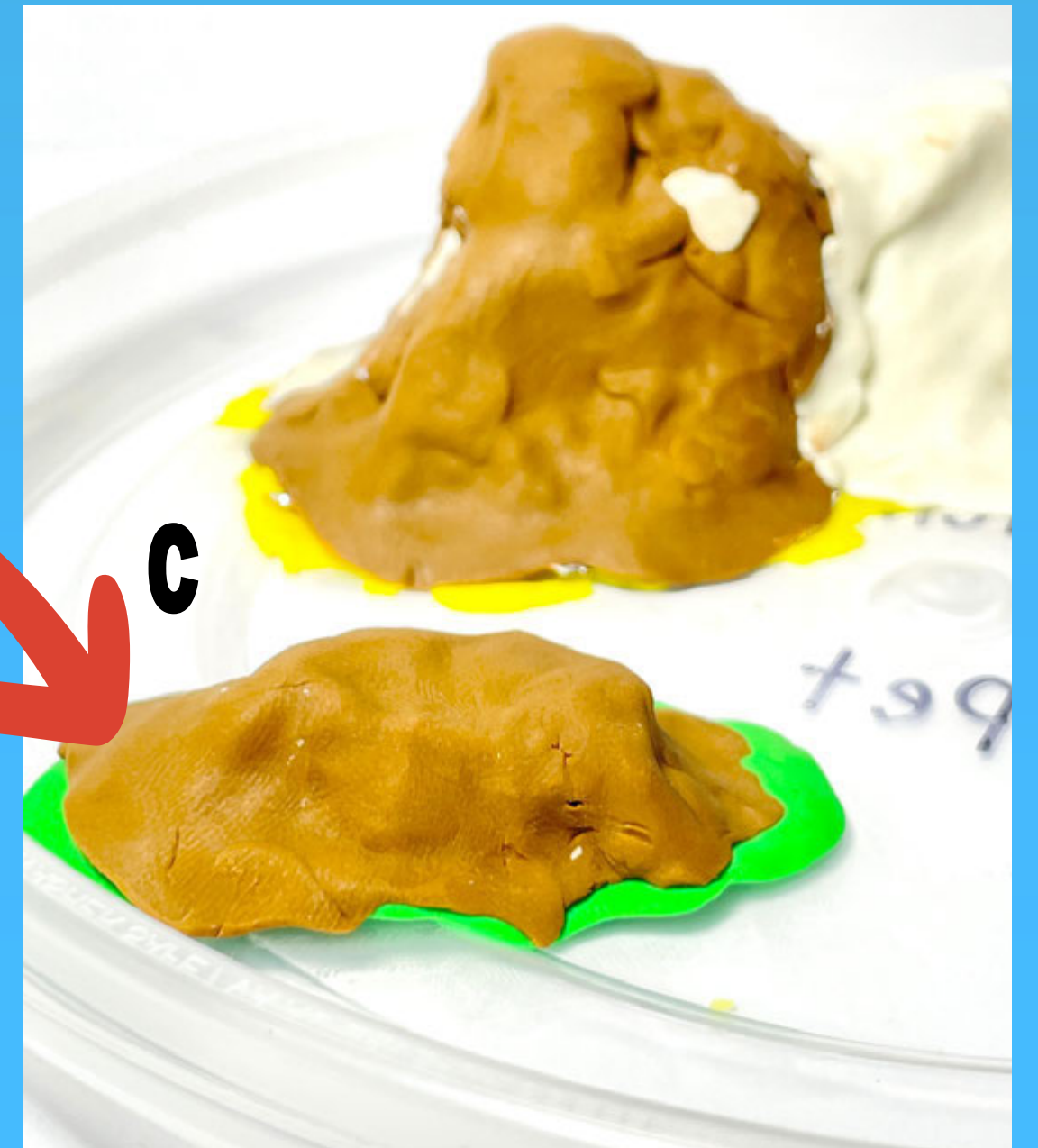
A



B

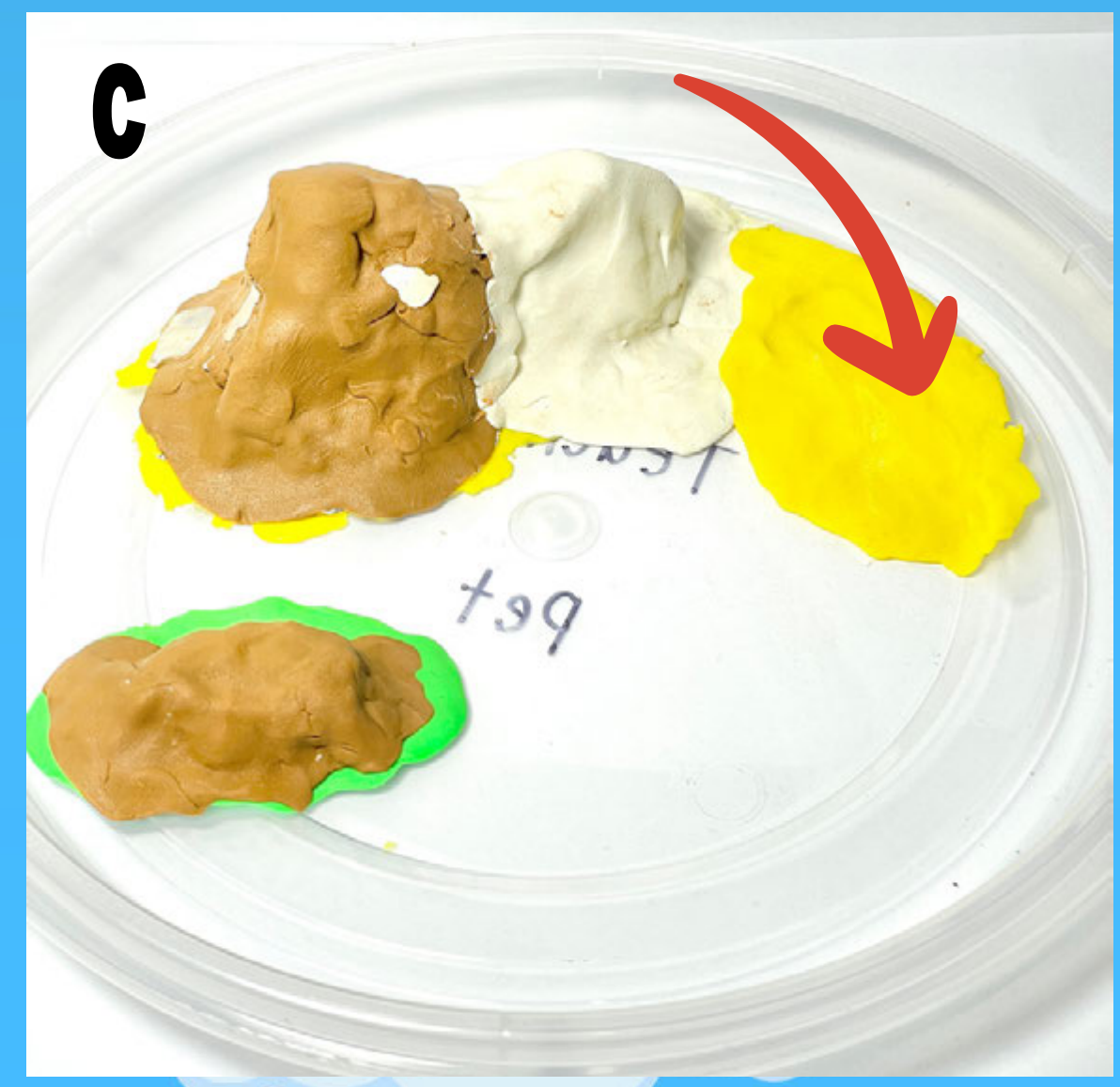
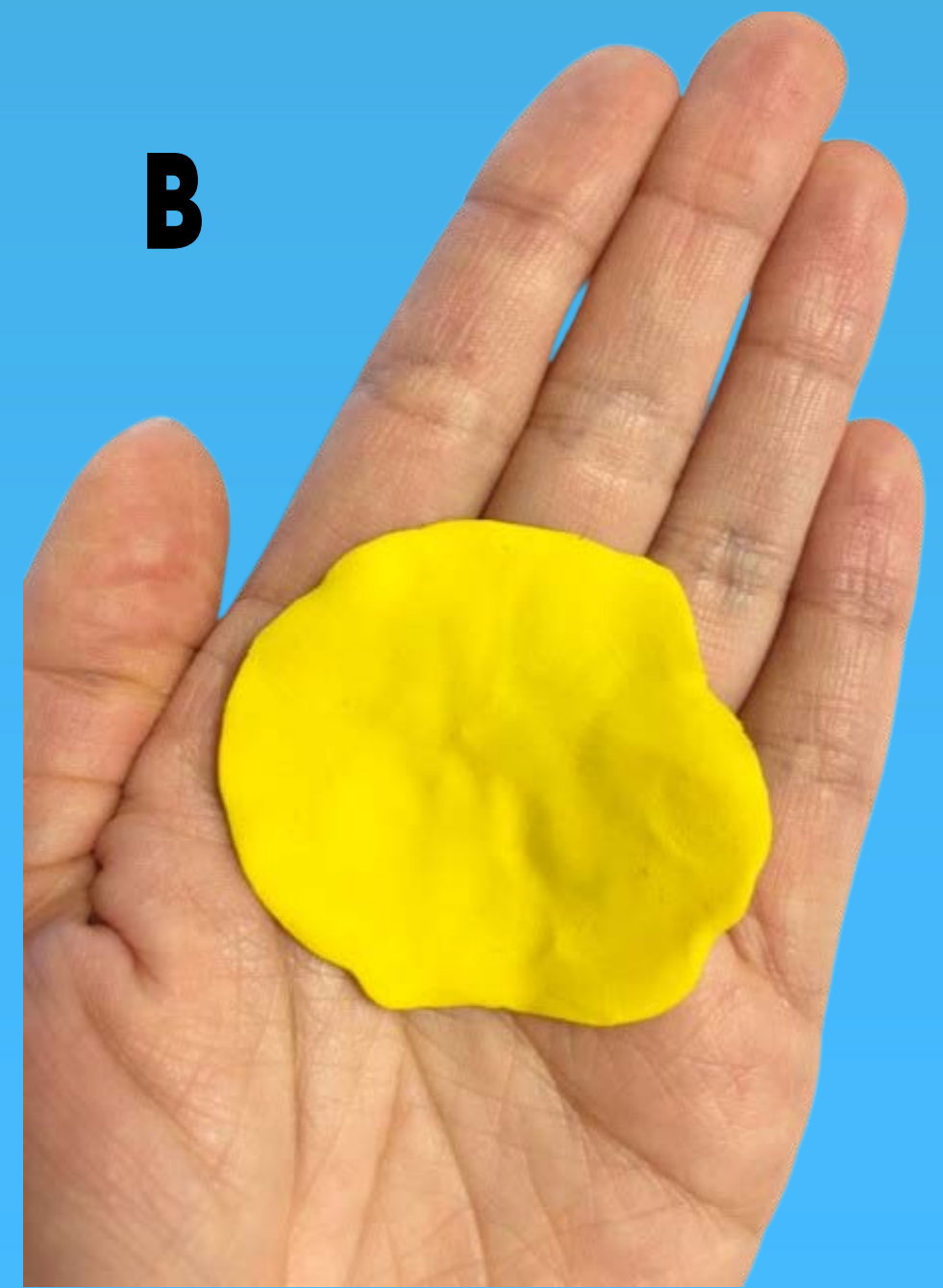


C

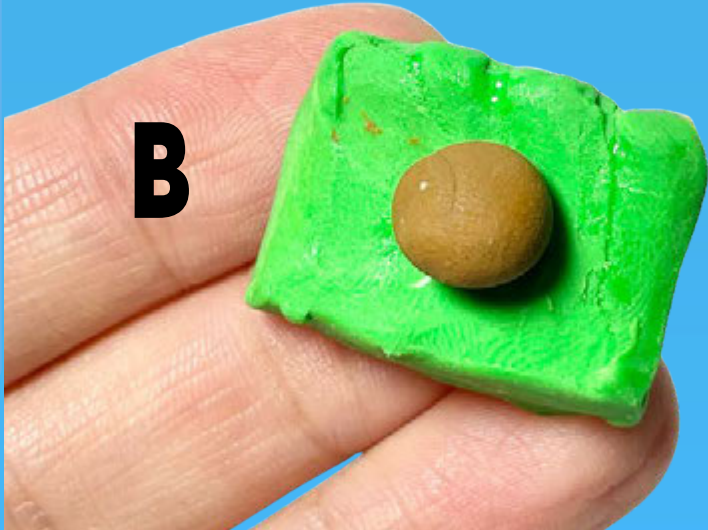
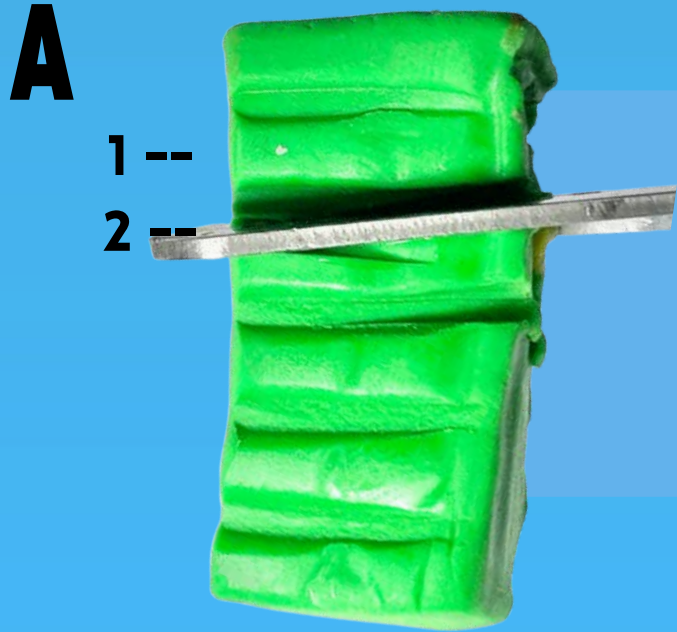


plateau

**Step 9: Cut yellow clay 1 line down. Set smaller piece aside.
Create a pancake for the prairie.**

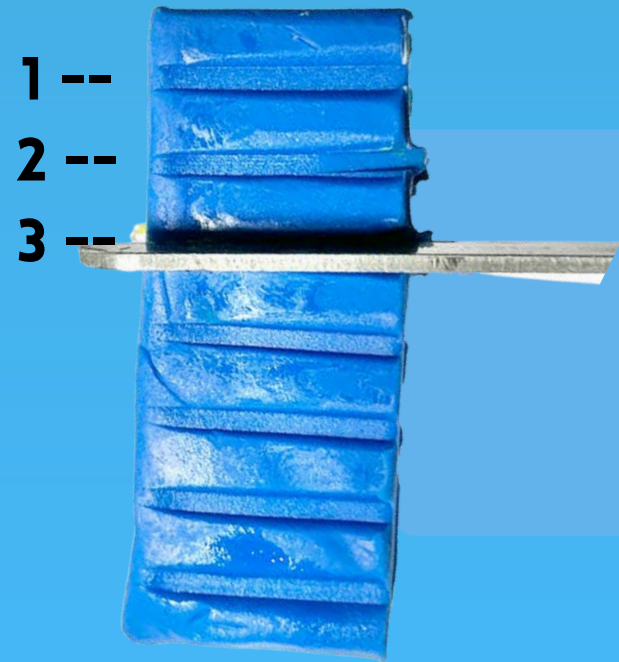


Step 10: Cut green clay 2 lines down. Set smaller piece aside. Slightly mix green and pea-size brown clay. Form a pancake for the wetlands.

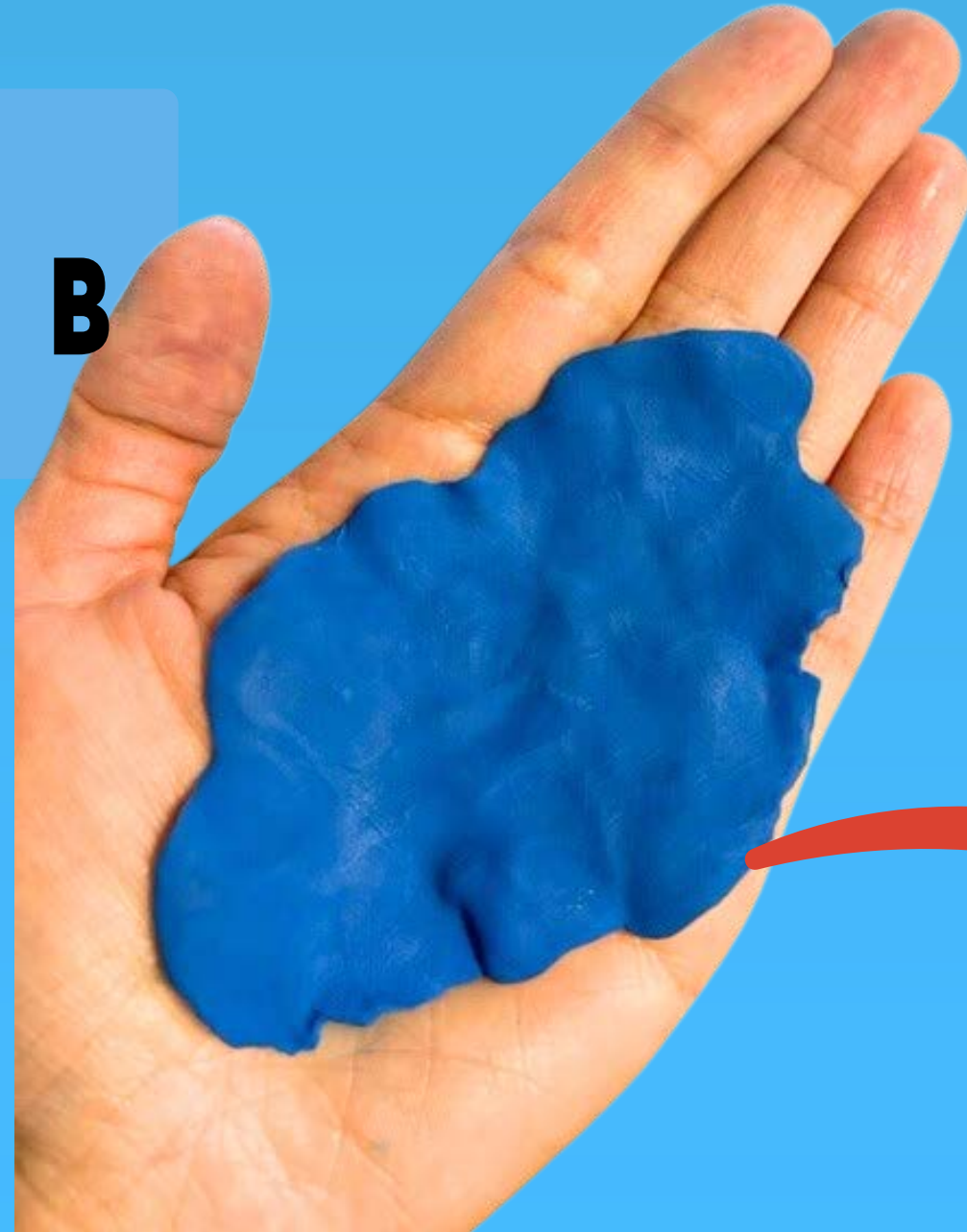


**Step 11: Cut blue clay 3 lines down. Set smaller piece aside.
Create a large pancake for the ocean.**

A



B



C



Ocean

Step 12: Cut white clay 1 line down. Set smaller piece aside. Fully mix white and green clay. Cut light green clay ball in half. Make a pancake for the valleys.



**Step 13: Cut remaining light green clay in half again. Set one piece aside.
Roll two logs to form hills in your valleys.**

Use one half to
form two logs

A



Cut half again

Save half to form
more hills

B

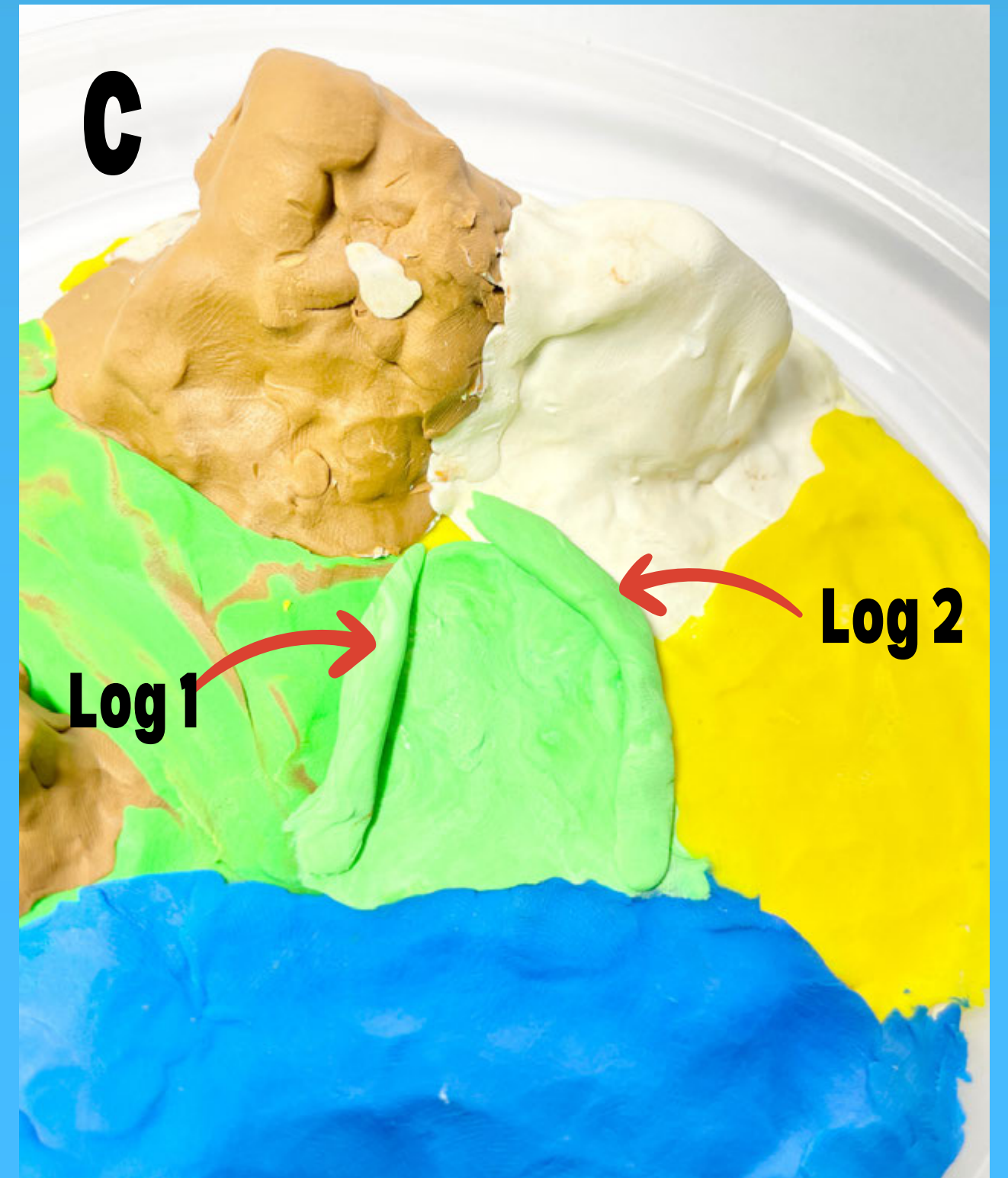


Log 1



Log 2

C



Log 1

Log 2

Step 13 cont'd: Use remaining light green clay to make more hills. Add the hills around your landform model.

A

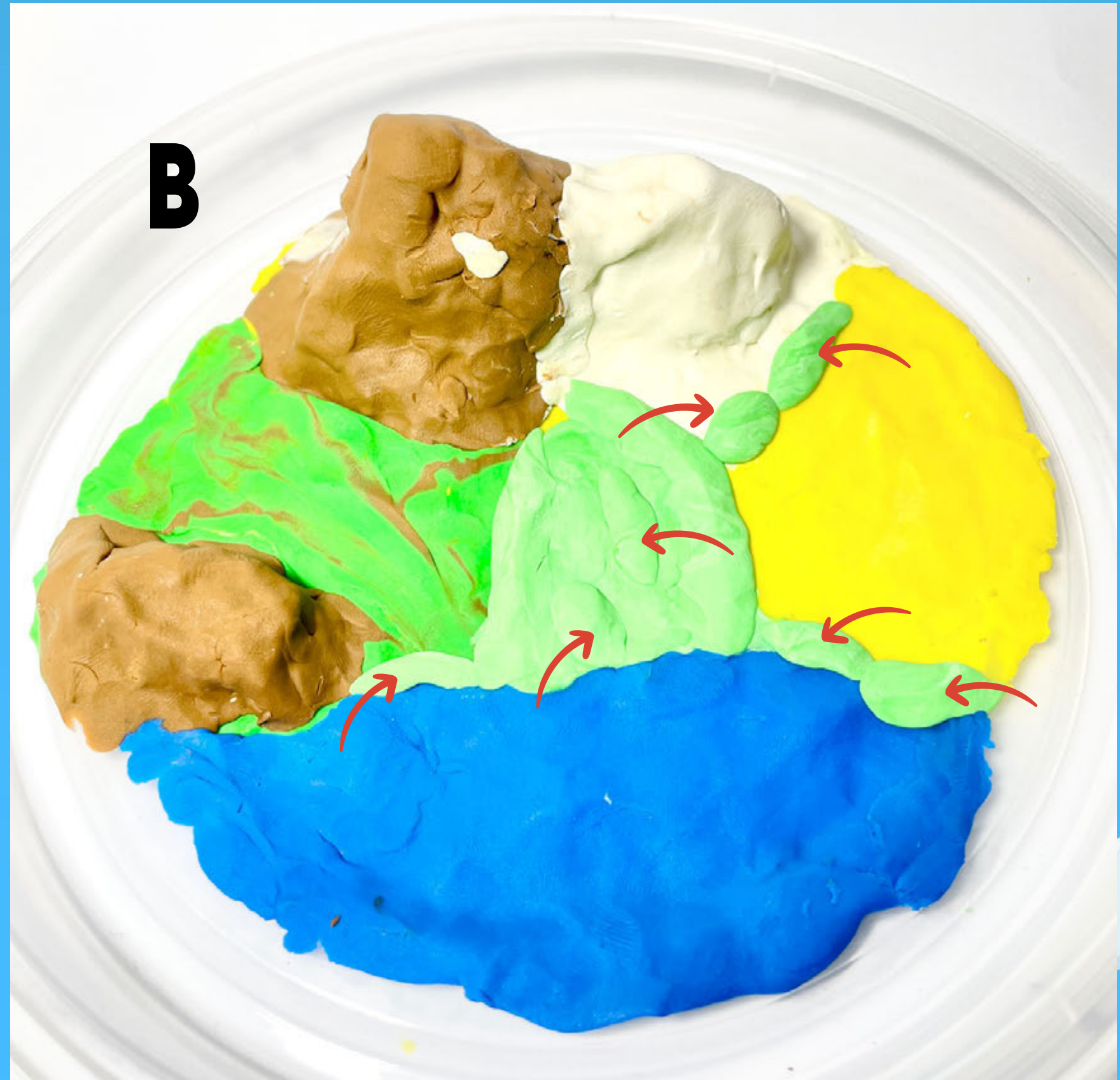


Roll small logs to form more hills



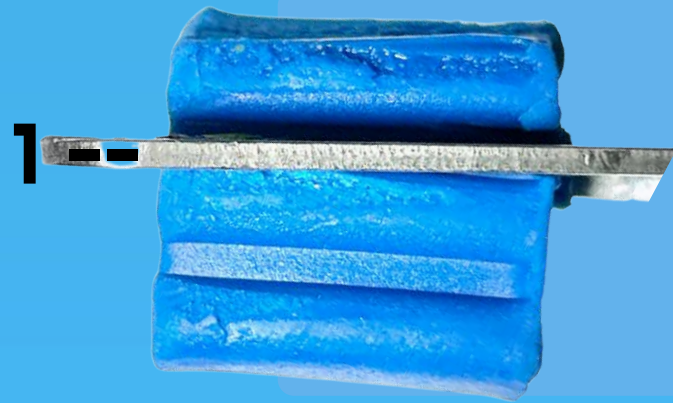
Hills

B



**Step 14: Cut blue clay 1 line down. Set larger piece aside.
Make a small pancake for the lake.**

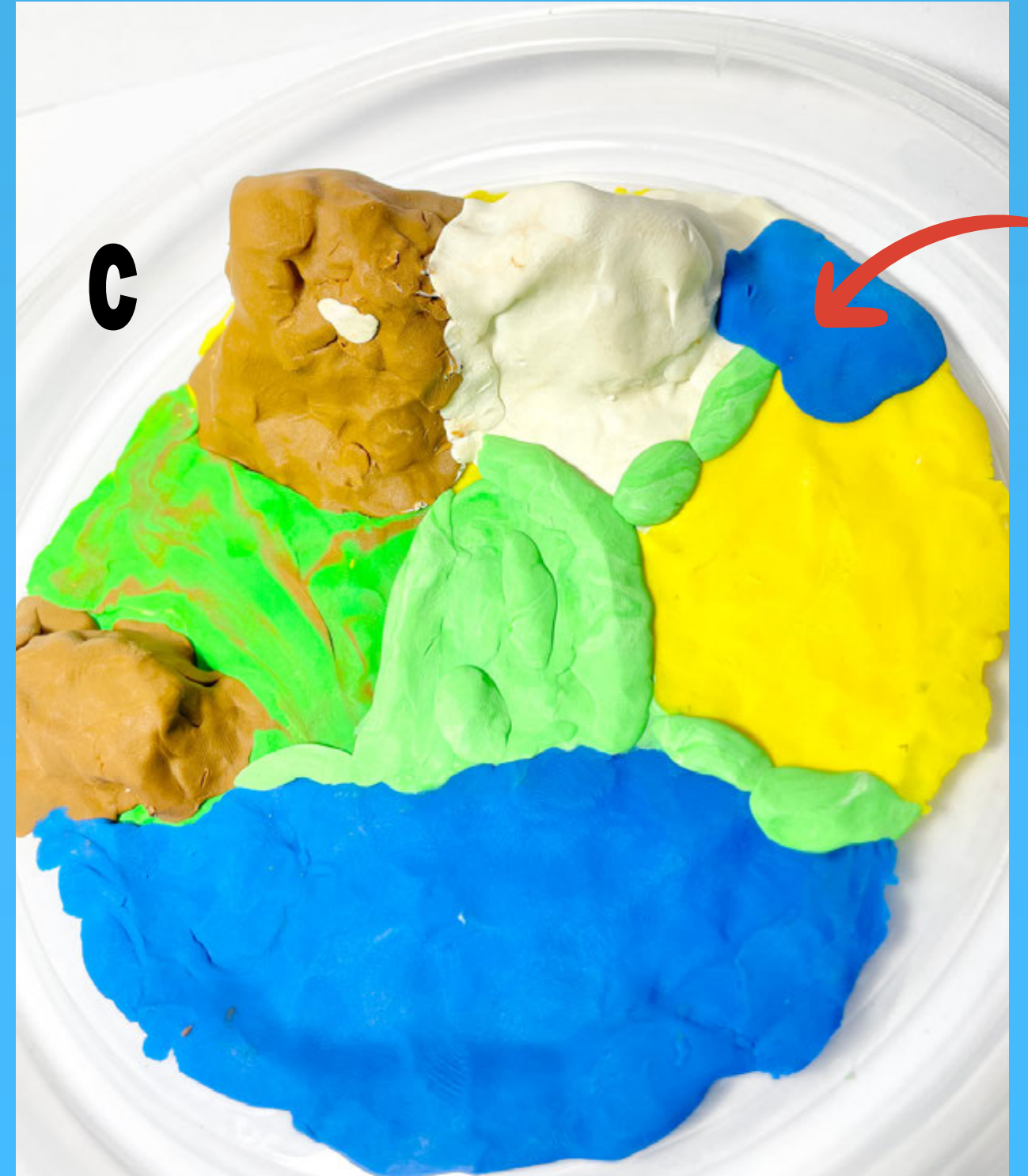
A



B

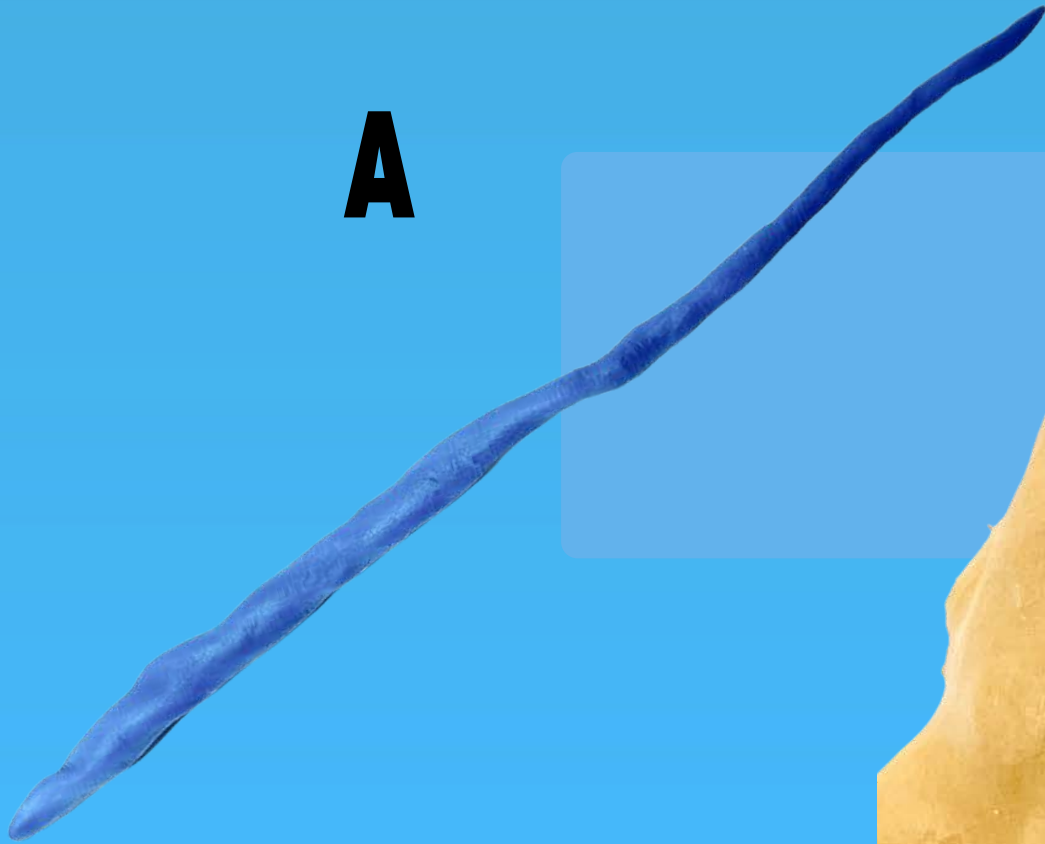


C

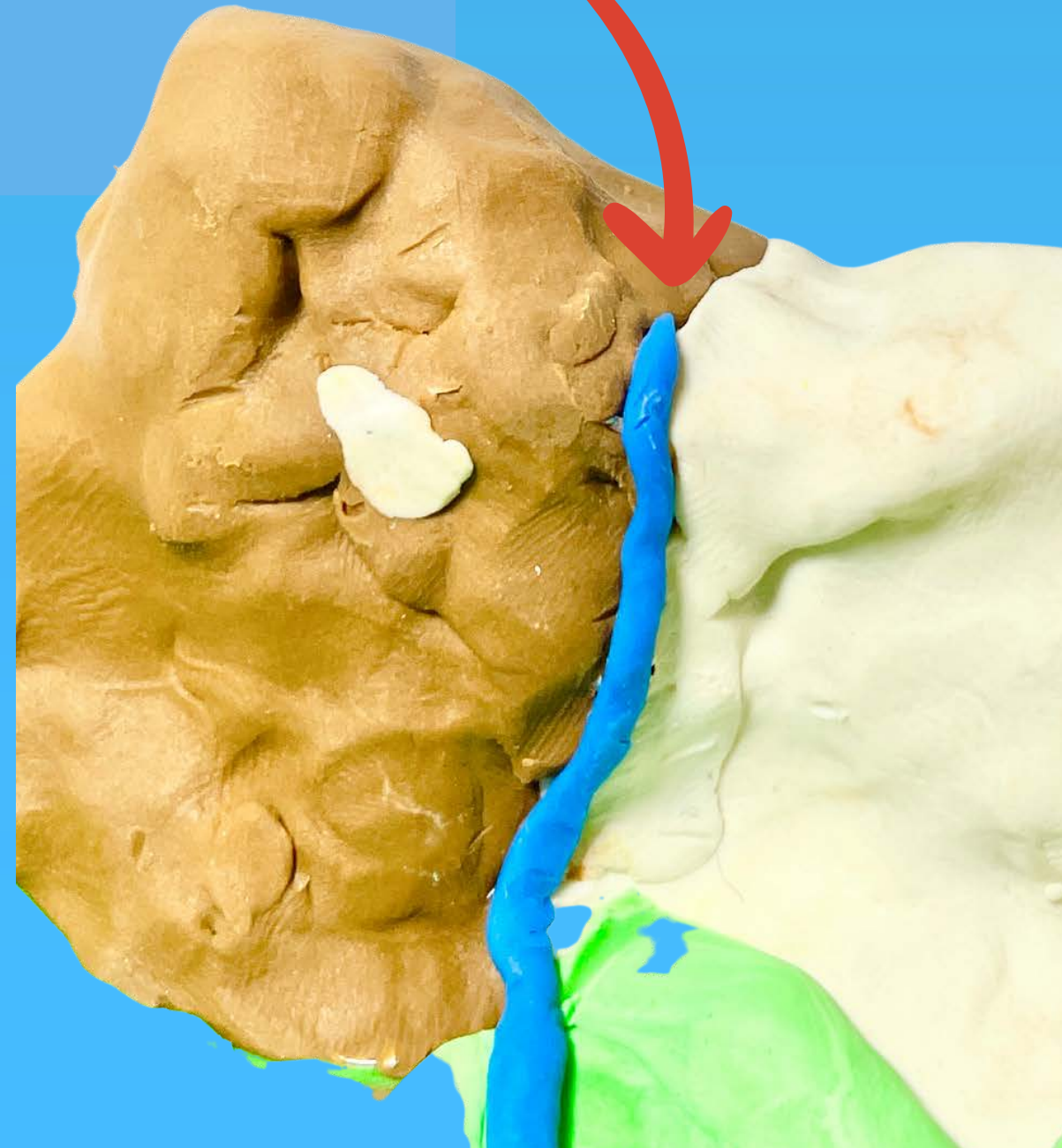


Step 15: Roll a long blue snake. Place narrow end where the mountain and glacier meet. Create a river flowing down through the valley and connecting to the ocean. Remove excess clay at the end.

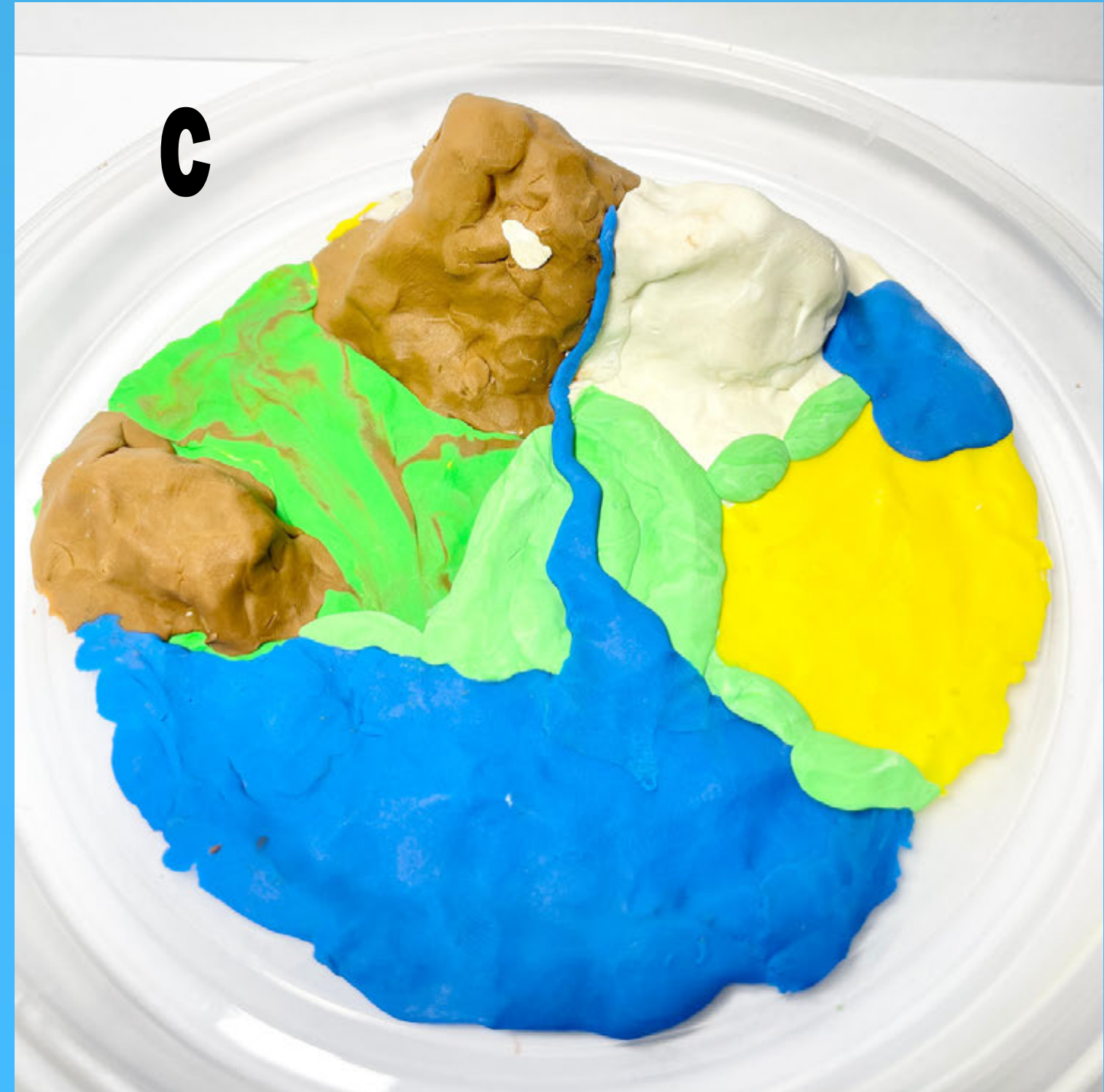
A



B

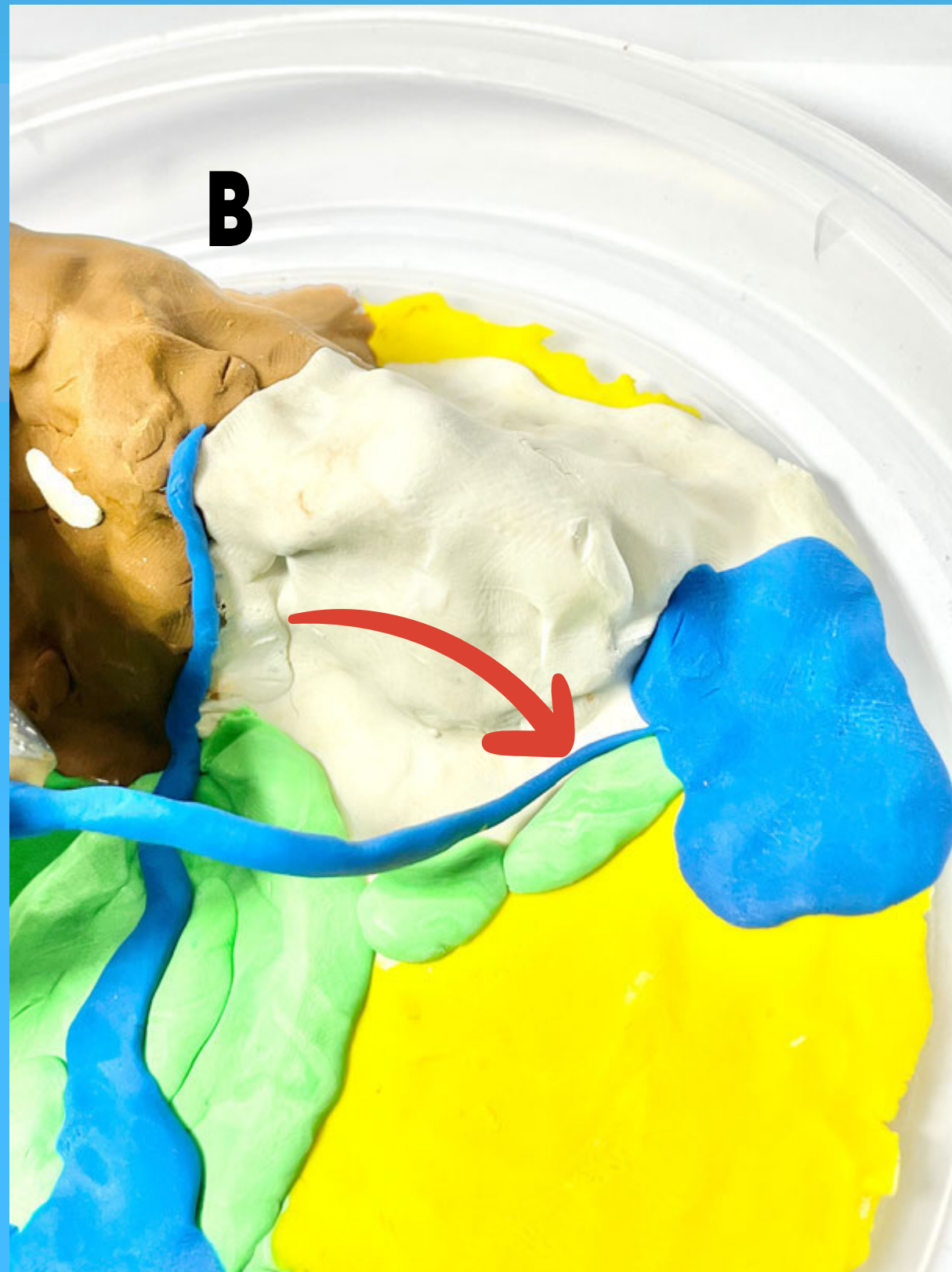
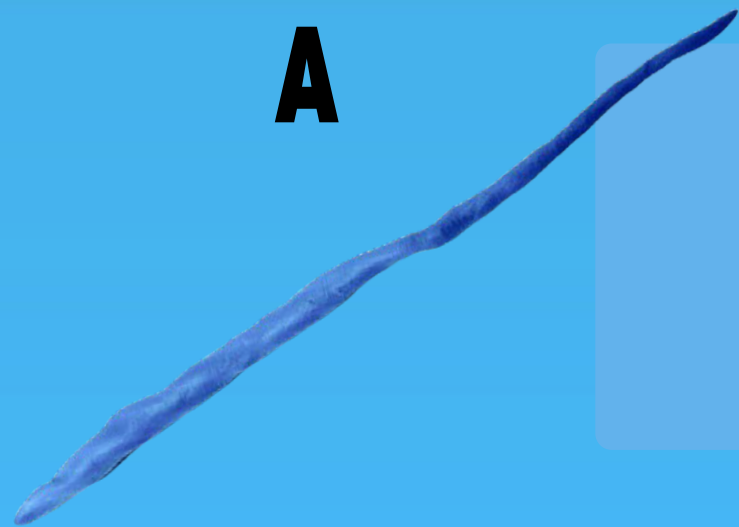


C



River

Step 16: Roll blue clay into a thin snake to create a small river to connect the lake to the larger river.



Rivers connecting

Step 17: Roll tiny snakes to create thin creeks and streams on the mountain connecting to the river. If you have excess blue, create more lakes/rivers as you wish.

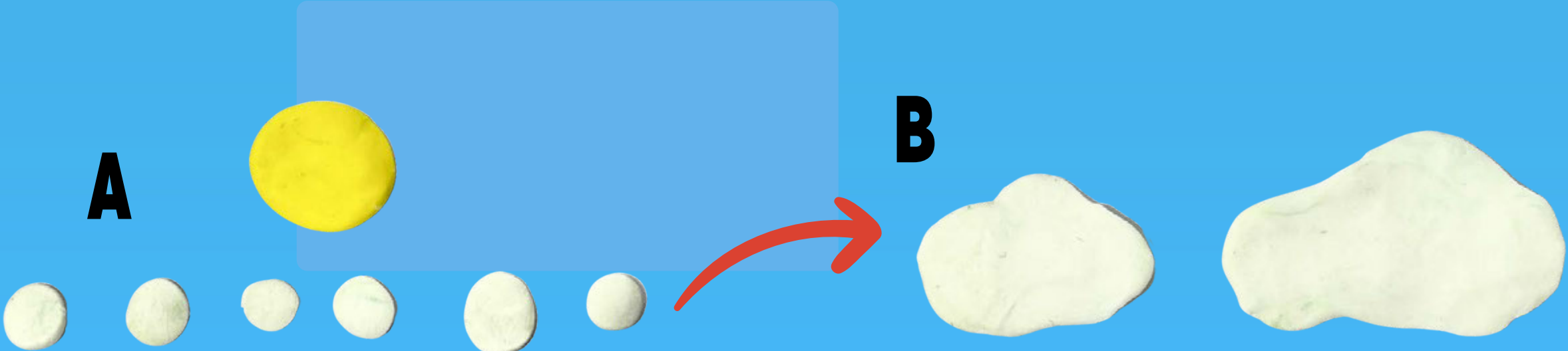




CHECK STOP Time Check



Step 18: Create a sun and clouds. Stick them inside the dome.



Step 19: Create details and texture to complete your landform model.

